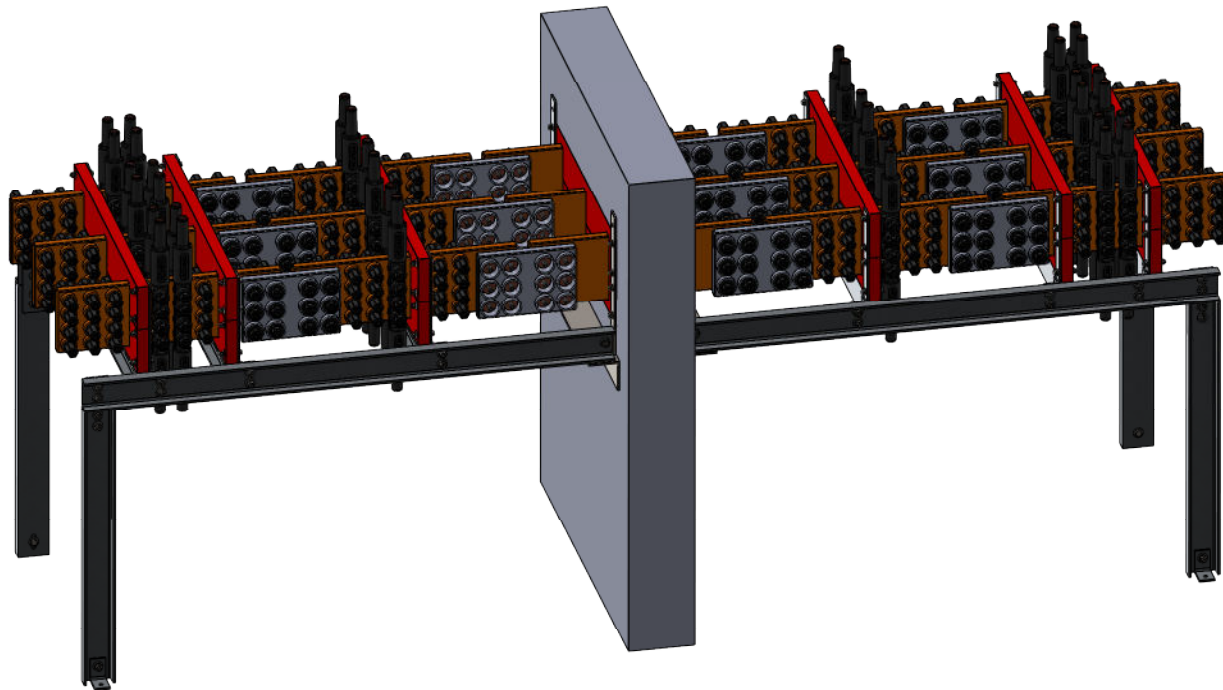


Installation Guide

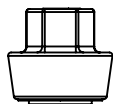


Specialized Installation Tools:

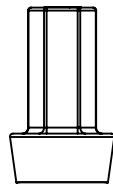
- 1-1/4" Socket
- Adjustable Torque Wrench
- Silicone Grease (Class & Stock #639-1437)

All interfaces on bus bar, splice plate, and lugs must be cleaned and greased using silicone grease upon installation. Plug nuts must be installed to the torque shown below:

Splice Plate Installation	
Plug Type	Tightening Torque
Clamping Plugs (Short)	40 ft-lbs
Sealing Plugs (Long)	10 ft-lbs

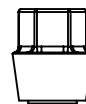


Splice Plate
Clamping Plug

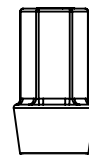


Splice Plate
Sealing Plug

Lug Installation	
Plug Type	Tightening Torque
Clamping Plugs (Short)	25 ft-lbs
Sealing Plugs (Long)	10 ft-lbs



Lug Clamping
Plug



Lug Sealing
Plug