



517 Lyons Ave, Irvington, NJ 07111
Phone: 973-371-1771
Fax: 973-371-4304
www.richards-mfg.com

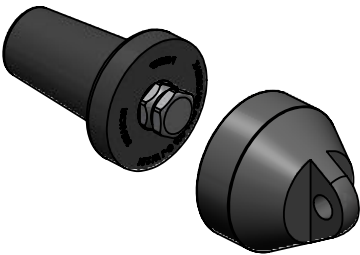
Installation Instructions

Plug & Well Products

Applicable Current Ratings

600A (Aluminum) | 900A (Copper)

Insulating Plug



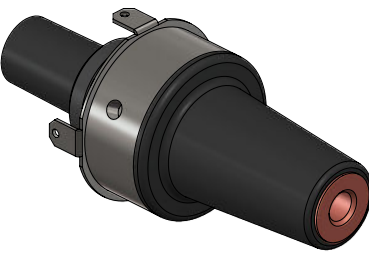
P625HIP
P925HIP
P635HIP
P935HIP

Connecting Plug



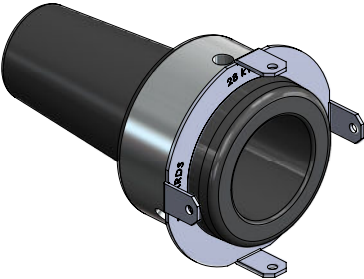
P625CPR
P925CPR
P635CP
P935CP

Reducing Tap Plug



P625RTP
P925RTP

Reducing Tap Well



P625RTW
P925RTW



WARNING

- System must be de-energized during installation or future operation of this product or its components.
- Do not touch or move energized connectors or components by hand.
- Excess distortion of the assembled connector may result in its failure.
- Failure to follow these instructions will result in damage to the connector and serious or fatal injury.
- This product should only be installed and/or operated by trained personnel in accordance with normal and safe work procedures.
- Variations in equipment or configuration or work procedures may not be covered in these instructions.
- Please contact Richards Manufacturing for any additional questions.

1

Installing Plug/Well Product

NOTE: Insulating Plug (HIP) shown as reference only. Installation steps apply to all Plug/Well products.

- Clean and lubricate (using supplied or approved silicone grease) the elbow interface and mating part interface as shown.

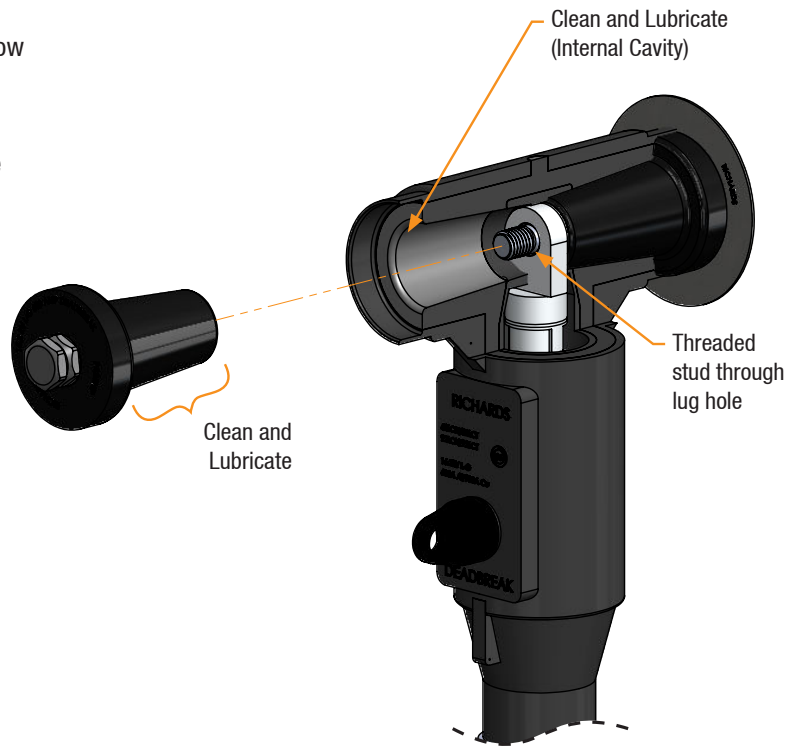


WARNING: Ensure stud is through lug hole as shown before tightening assembly

- Insert mating part, engage threads, and hand-tighten.

Side 2 interface may be one of the following:

- Insulating Plug (Step 2, Option 1)
- Reducing Tap Well (Step 2, Option 2)
- Reducing Tap Plug (Step 2, Option 2)
- Connecting Plug (Step 2, Option 2 or 3)

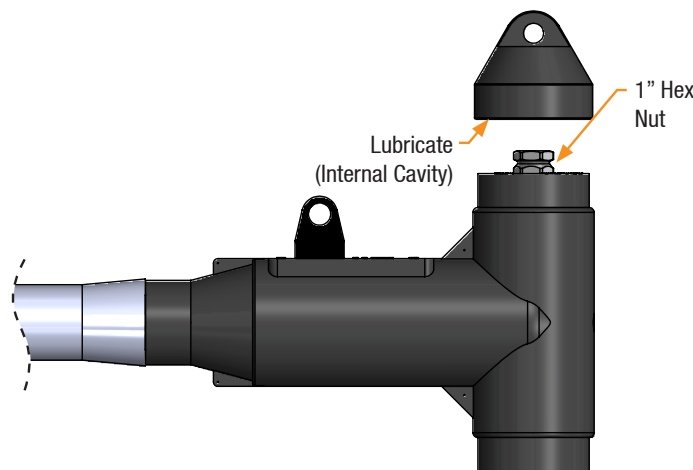


2

Proper Tightening Procedure

Option 1-Installing an Insulating Plug

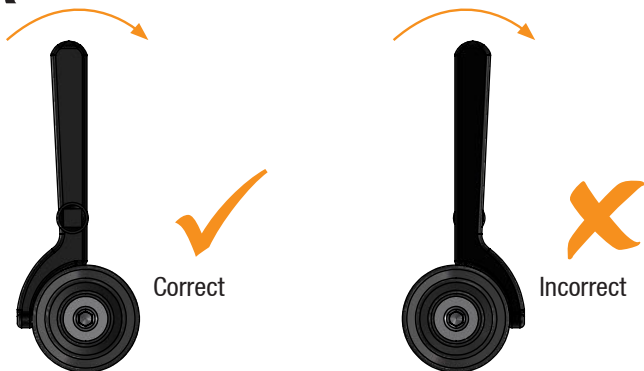
- Tighten nut to 50-60 ft. lbs.
- Lubricate inside surface of cap.
- Push cap onto plug until it snaps in place.



OR

Option 2-Installing an Epoxy Connecting Plug, Reducing Tap Well, or Reducing Tap Plug

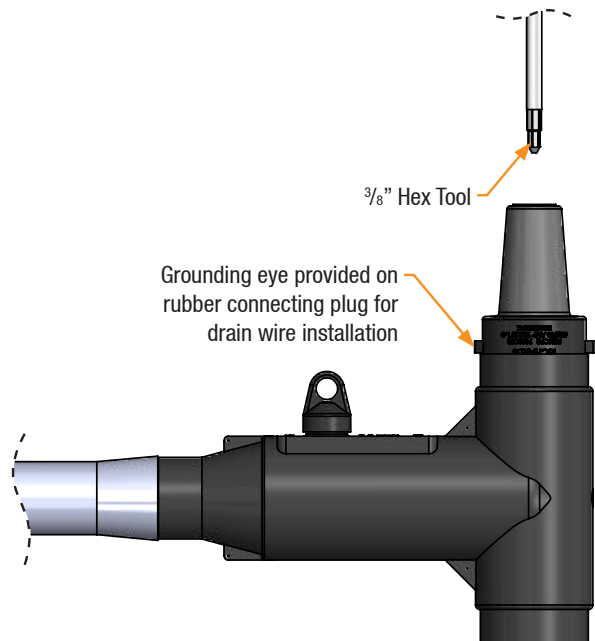
- Attach a torque wrench to a spanner wrench.
- Insert spanner wrench into holes of the mating part. BE SURE SPANNER WRENCH is tightened in the correct direction to prevent damage to the epoxy hole.
- Tighten to an indicator value of 40-48 ft. lbs.



OR

Option 3-Installing a Rubber Connecting Plug

- Insert 3/8" hex tool into accessory and engage hex broach.
- Tighten to 50-60 ft. lbs. using appropriate tool.
- Insert one end of a piece of wire (#14 AWG copper or larger) through one of the available grounding eyes and twist to make a small loop. Be sure not to damage grounding eye.



NOTE: If your mating part is not described above check for separate instruction sheets or contact Richards Manufacturing.

Installation Complete