

517 Lyons Ave, Irvington, NJ 07111

Phone: 973-371-1771

Fax: 973-371-4304

[www.richards-mfg.com](http://www.richards-mfg.com)

# Installation Instructions

## Deadbreak Junctions

### Applicable Current Ratings

600A (Aluminum)

900A (Copper)

### Applicable Configurations

2 Point, 3 Point, &amp; 4 Point

### Applicable Catalog Prefix

#### 15/25KV Class

P625JD-

P925JD-

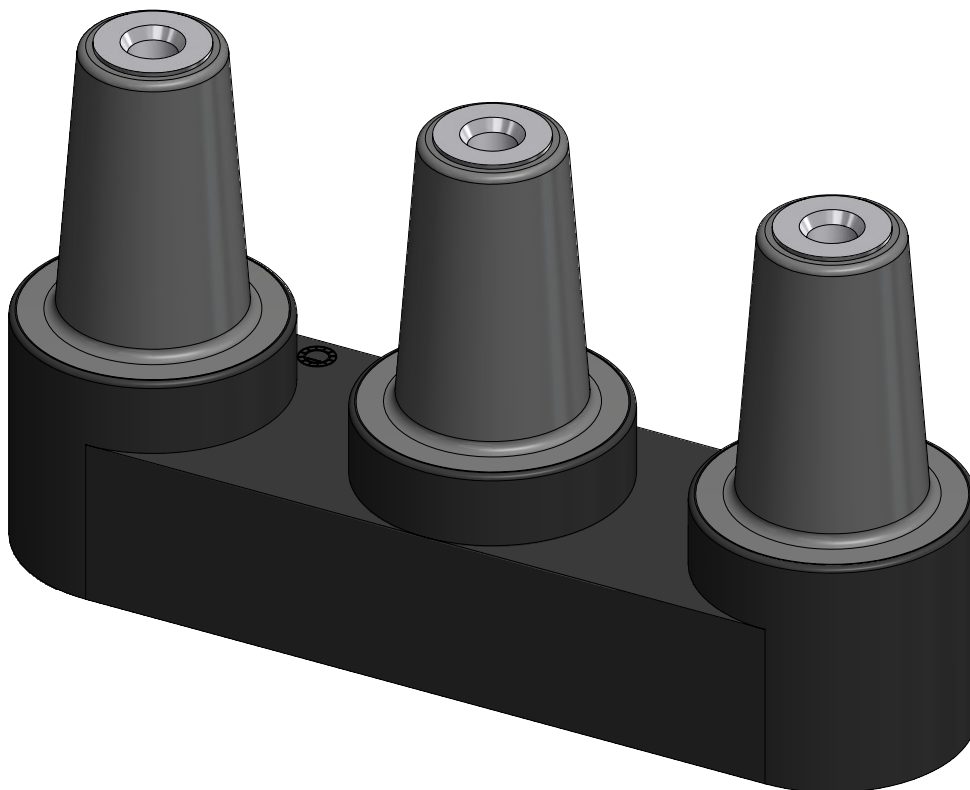
#### 35kV Class

P635JD-

P935JD-

### Mounting Configurations

Bracket, U-Strap





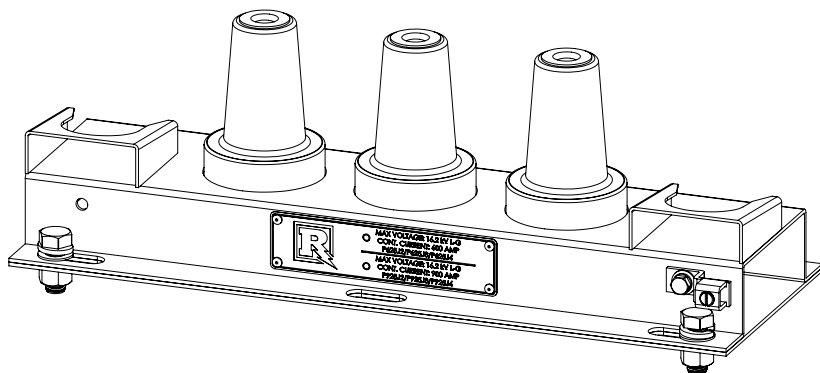
## WARNING

- System must be de-energized during installation or future operation of this product or its components.
- Do not touch or move energized connectors or components by hand.
- Excess distortion of the assembled connector may result in its failure.
- Failure to follow these instructions will result in damage to the connector and serious or fatal injury.
- This product should only be installed and/or operated by trained personnel in accordance with normal and safe work procedures.
- Variations in equipment or configuration or work procedures may not be covered in these instructions.
- Please contact Richards Manufacturing for any additional questions.

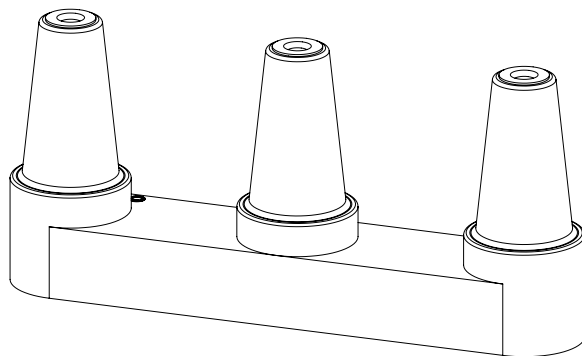
## KIT CONTENTS

Standard kits may include the following. Custom kits may vary.

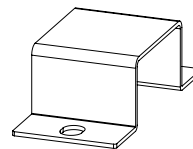
Check package contents to be sure they are complete, undamaged, and properly sized for the application.



OR



**1/2-13" Mounting  
Hardware**  
(4 Sets)



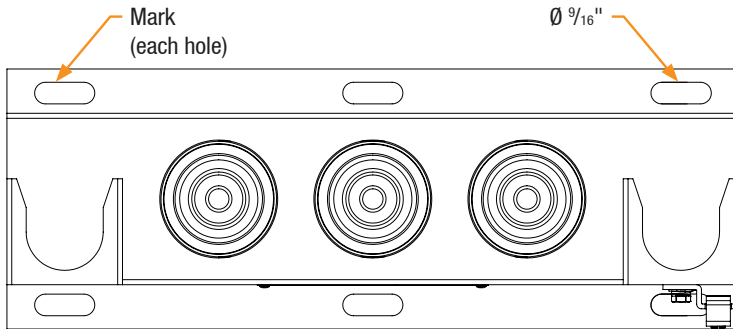
**U-Straps**  
(Amount included varies by  
Junction Configuration)

## 1

## Determining Mounting Location

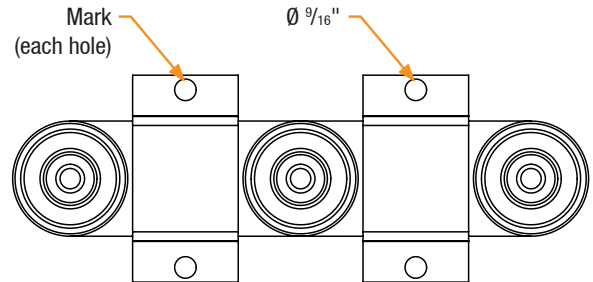
### If mounting to a wall

- Position junction in the desired mounting location. Using bracket as a template, mark the location using the holes in the bracket.
- Drill mounting holes in marked location for supplied  $\frac{1}{2}$ -13" hardware.



### If mounting to pre-drilled backplate

- Position junction on backplate in desired mounting location. Use U-Straps for spacing or refer to chart in reference section on page 5. Ensure pre-drilled holes line up with mounting plate.

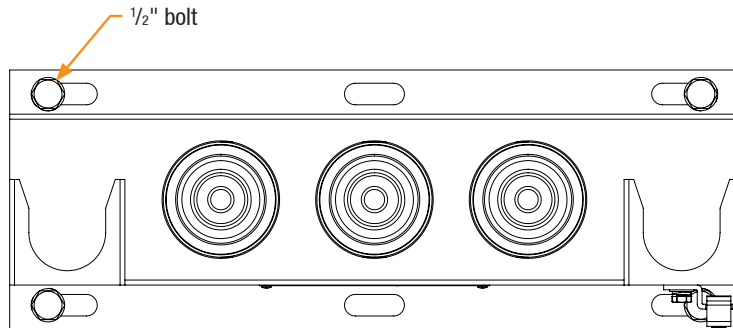


## 2

## Installing Junction

### If mounting to a wall

- Secure junction to surface using provided or approved mounting hardware.
- Fully tighten all bolts.

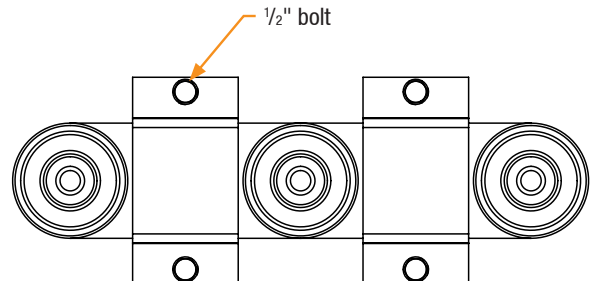


### If mounting in a vault

- Bolt junction to backplate using flat and lock washer.

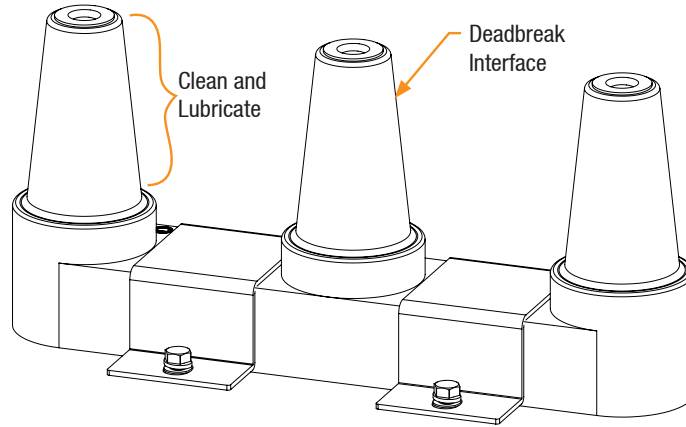
**NOTE:** Ensure all junctions are correctly mounted before tightening

- Fully tighten all bolts.



**3****Installing Mating Components**

- A. Remove shipping covers from all interfaces and wipe clean. Using supplied or approved silicone grease, lubricate all interfaces.
- B. Using instructions provided by component manufacturer, install mating components on all interfaces.

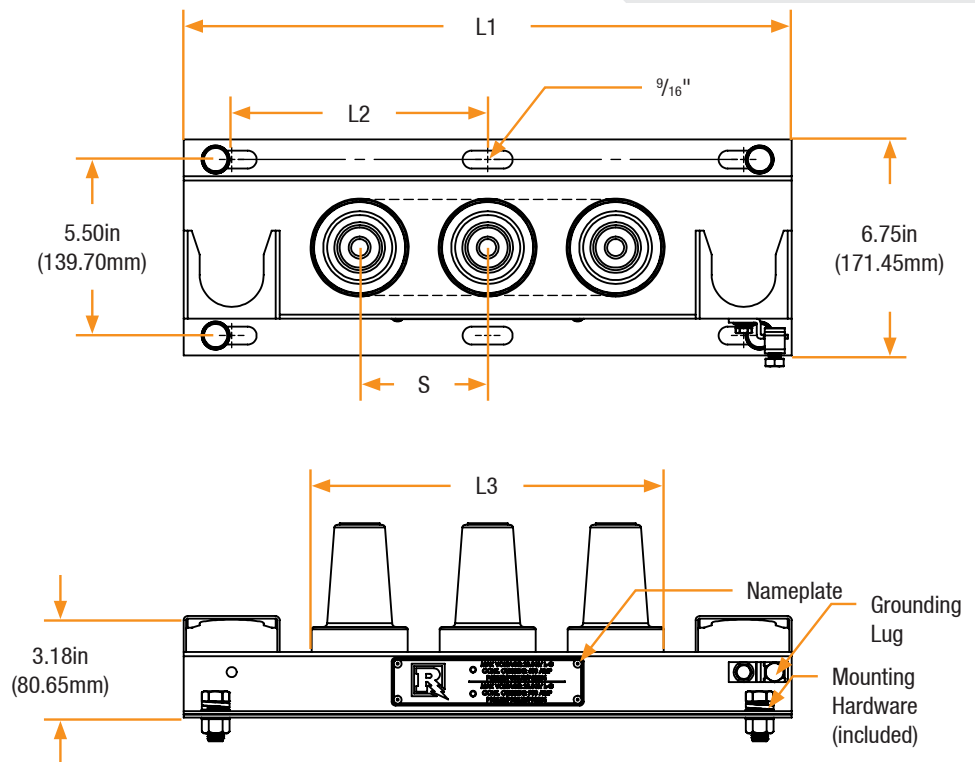


## Reference

**Dimensional Chart**

# Of Positions	Spacing (S)	L1	L2	L3
2	4"	15"	6"	7"
	6"	21"	9"	9"
3	4"	19"	8"	11"
	6"	27"	12"	15"
4	4"	23"	10"	15"
	6"	33"	15"	21"

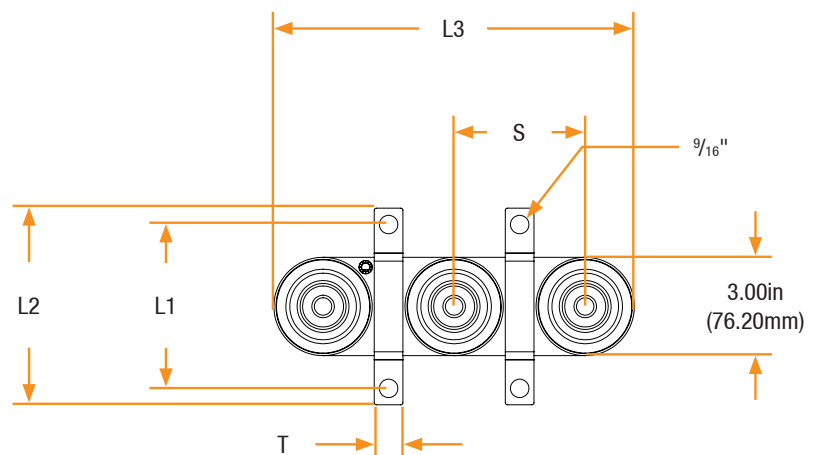
**Junction Dimensions - Bracket**



**Dimensional Chart**

# Of Positions	Spacing (S)	T	L1*	L2	L3
2	4"	$2\frac{3}{4}"$	$4\frac{5}{8}"$	$5\frac{5}{8}"$	7"
	6"	$2\frac{3}{4}"$	$4\frac{5}{8}"$	$5\frac{5}{8}"$	9"
3	4"	$2\frac{3}{4}"$	$4\frac{5}{8}"$	$5\frac{5}{8}"$	11"
	6"	$2\frac{3}{4}"$	$4\frac{5}{8}"$	$5\frac{5}{8}"$	15"
4	4"	$2\frac{3}{4}"$	$4\frac{5}{8}"$	$5\frac{5}{8}"$	15"
	6"	$2\frac{3}{4}"$	$4\frac{5}{8}"$	$5\frac{5}{8}"$	21"

**Junction Dimensions - U Straps**



\* U Straps for 4" spaced Junctions are available with 5" hole to hole spacing. Contact factory for more information.





