

517 Lyons Ave, Irvington, NJ 07111  
 Phone: 973-371-1771  
 Fax: 973-371-4304  
 www.richards-mfg.com

# Installation Instructions

## IBB Series I Insulated Bus Bar

### Required Installation Tools

- 1 1/4", 3/4", and 9/16" Sockets
- Adjustable Torque Wrench
- Rubber Gloves for applying silicone grease
- Safety equipment per customer requirements

### Interface Cleaning and Greasing Instructions

- A. All interfaces on bus bar and lugs must be cleaned and greased using silicone dielectric grease (included in kit) upon installation.

### Installing Lugs



#### If installing lugs supplied with rolled back insulation:

- Fully insert conductor into barrel and crimp per below chart.
- Release clip and remove.
- Unroll rubber.
- Create seal per "Sealing Instructions".



#### If installing standard lug:

- Roll back rubber insulation.
- Fully insert conductor into barrel and crimp per below chart.
- Unroll rubber.
- Create seal per "Sealing Instructions".

### Crimp Chart and Maximum Voltage Information

Lug Type	Max Voltage	Lug Kit Number	Conductor Size	Burndy Die
Limited	240	IBBL-12L	4/0	U28RT (3)
		IBBL-18L	500	U34RT (3)
		IBBL-23L	750	U39RT (3)
		IBBL-28L	1000	44RT (4)
Non-Limited	600	IBBL-12	4/0	U28RT (3)
		IBBL-18	500	U34RT (3)
		IBBL-20	600	U36RT (3)
		IBBL-28	1000	44RT (4)

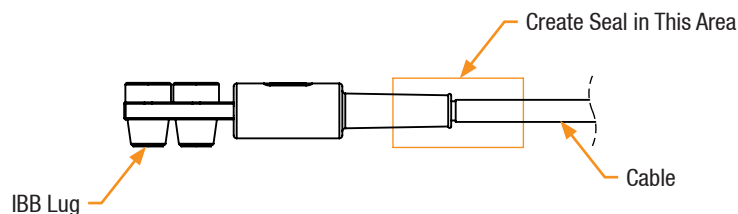
Crimp Die (Minimum # of Crimps)



**WARNING: Do not use limiter lugs above their rated maximum voltage.**

## Sealing Instructions

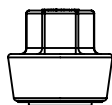
- A. A seal must be created between the lug insulation and cable jacket after crimping. This seal can be heat shrink, cold shrink, or hand taped using self-fusing tape.



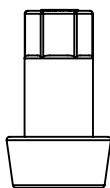
## Plug Instructions

- A. Plugs must be installed to the torque shown below. Torque value is engraved on face of epoxy nut for quick reference.

Splice Plate Installation	
Plug Type	Tightening Torque
Clamping Plugs (Short)	40 ft-lbs
Sealing Plugs (Long)	15 ft-lbs

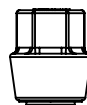


**Splice Plate Clamping Plug**  
 P/N: IBB-P2-PLUG-SPLICE

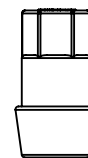


**Splice Plate Sealing Plug**  
 P/N: IBB-P2-PLUG-BUS

Lug Installation	
Plug Type	Tightening Torque
Clamping Plugs (Short)	25 ft-lbs
Sealing Plugs (Long)	15 ft-lbs



**Lug Clamping Plug**  
 P/N: IBB-P1-PLUG-LUG

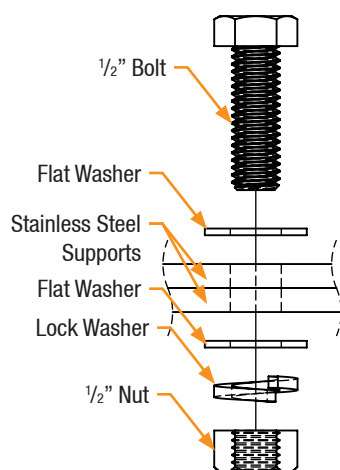


**Lug Sealing Plug**  
 P/N: IBB-P1-PLUG-BUS

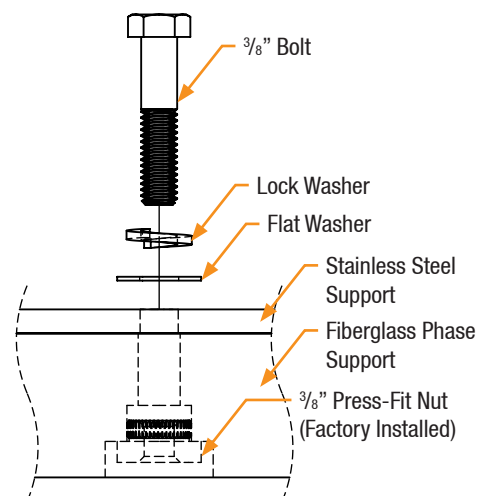


**WARNING:** Do NOT use impact gun to torque plugs. This method may damage the threads/plugs and cannot guarantee proper torque levels for each of the plugs.

## Hardware Assembly Information



**1/2" Bolted Connection Through Stainless Steel Supports**



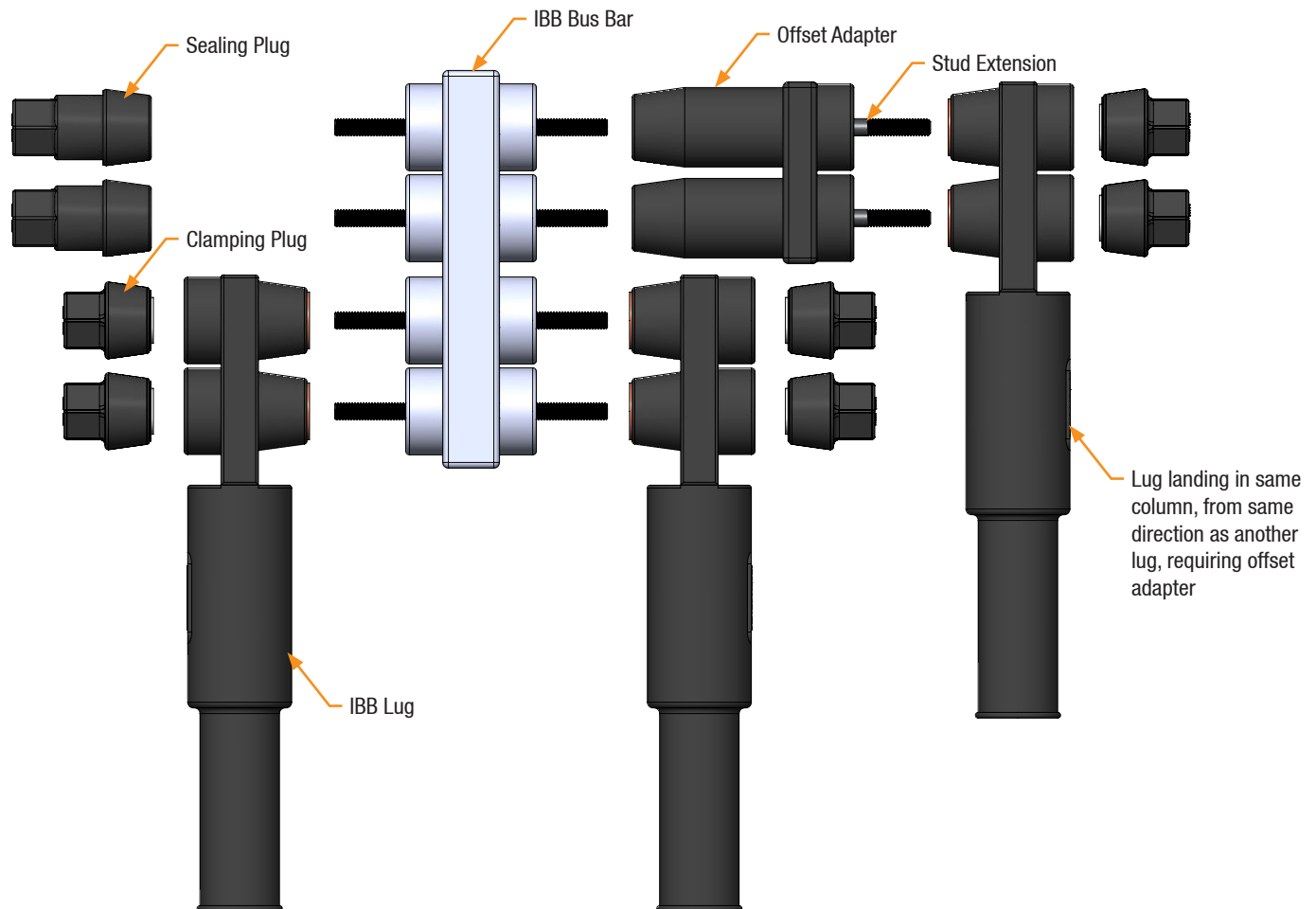
**3/8" Bolted Connection Between Stainless Steel and Fiberglass**

**NOTE:** hardware for securing support structure to vault or other structure is not included and is to be specified and supplied by customer.

## Installing Offset Adapter

IBB Bus Bar sections are typically molded with two IBBL Lug interfaces per “column”. Offset adapters are needed to connect lugs to those interfaces coming from the same direction. To install Offset Adapter:

- Hand thread the stud extensions until they bottom out, no need to torque.
- Clean and grease interfaces.
- Install rubberized offset adapter.
- Install lug.
- Install plugs to indicated tightening torque.

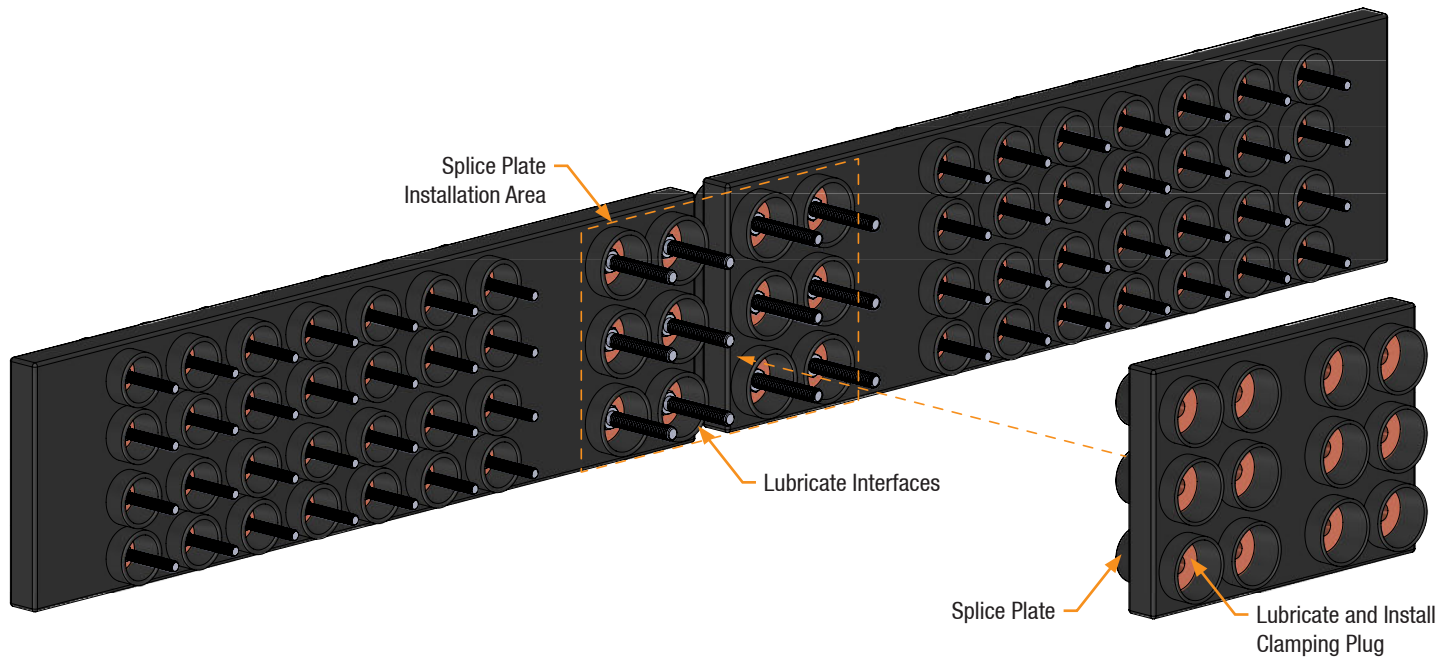


## Installing Splice Plate

### Installing Splice Plate:

- A. Install Splice Plate into designated splice plate locations on whichever face of the bus bar is preferred for installation. Lubricate interfaces, mount Splice Plate, and install 12ea IBB-P2-PLUG-SPLICE Clamping Plugs at specified torque value listed in this sheet (engraved on back side of plug for convenience and reference as well).

**NOTE:** any un-occupied splice plate interfaces must be sealed using IBB-P2-PLUG-BUS Sealing Plugs.



### Installing Non-Bussed Splice Plate Support:

- A. If supplied, install Non-Bussed Splice Plate Support to support Bus Bars in case the Splice Plate is removed. If installing in addition to Splice Plate, install on opposite face of bus bars. Lubricate interfaces, mount Splice Plate Support, and install 4ea IBB-P2-PLUG-SPLICE Clamping Plugs at specified torque value listed in this sheet (engraved on back side of plug for convenience/reference as well).

**NOTE:** any un-occupied splice plate interfaces must be sealed using IBB-P2-PLUG-BUS Sealing Plugs.

