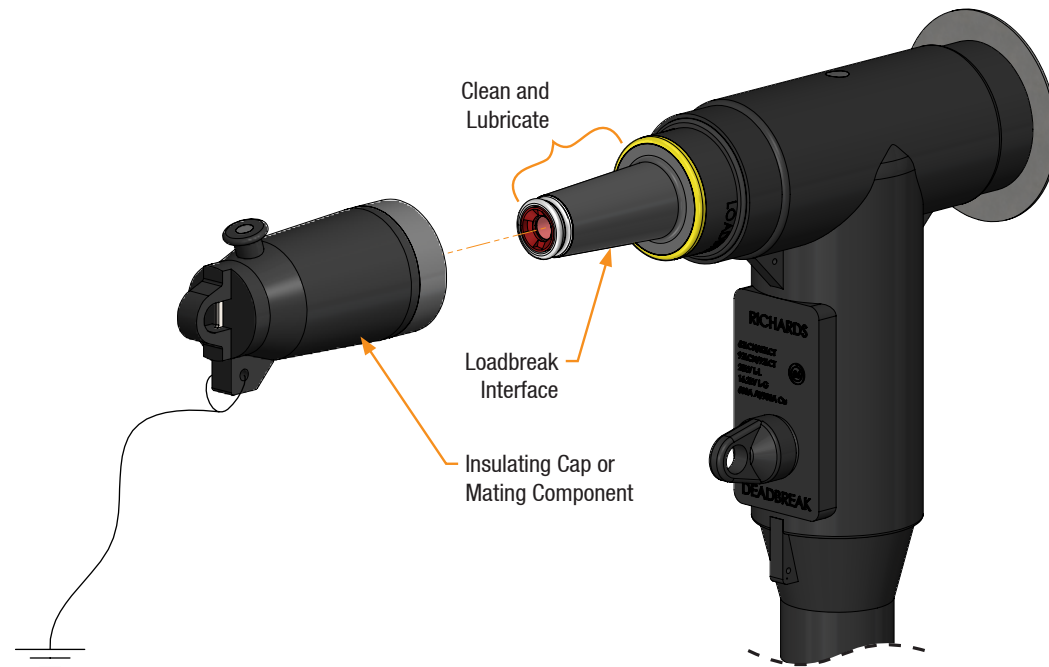


4

Installing Mating Component

- A. Clean and lubricate (using supplied or approved silicone grease) loadbreak interface of ETP and interface of insulating cap or mating part.
B. Install mating component per manufacturer instructions. Loadbreak Cap shown as reference.



WARNING: Assembly cannot be energized until an appropriate mating interface is installed on the ETP's Loadbreak Interface.

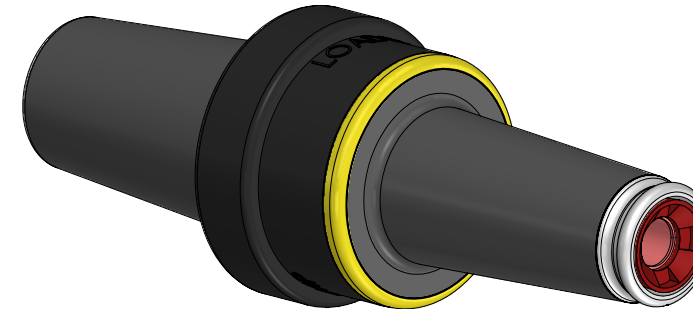
Installation Complete

517 Lyons Ave, Irvington, NJ 07111
Phone: 973-371-1771
Fax: 973-371-4304
www.richards-mfg.com

Installation Instructions

Elbow Tap Plug

15kV



P615ETP

25kV



P625ETP



WARNING

- System must be de-energized during installation or future operation of this product or its components.
- Do not touch or move energized connectors or components by hand.
- Excess distortion of the assembled connector may result in its failure.
- Failure to follow these instructions will result in damage to the connector and serious or fatal injury.
- This product should only be installed and/or operated by trained personnel in accordance with normal and safe work procedures.
- Variations in equipment or configuration or work procedures may not be covered in these instructions.
- Please contact Richards Manufacturing for any additional questions.

KIT CONTENTS

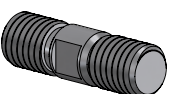
Standard kits may include the following. Custom kits may vary.
Check package contents to be sure they are complete, undamaged, and properly sized for the application.



Elbow Tap Plug



Silicone Lubricant
P6SL1



Stud
P625HIP-STUD
P925HIP-STUD

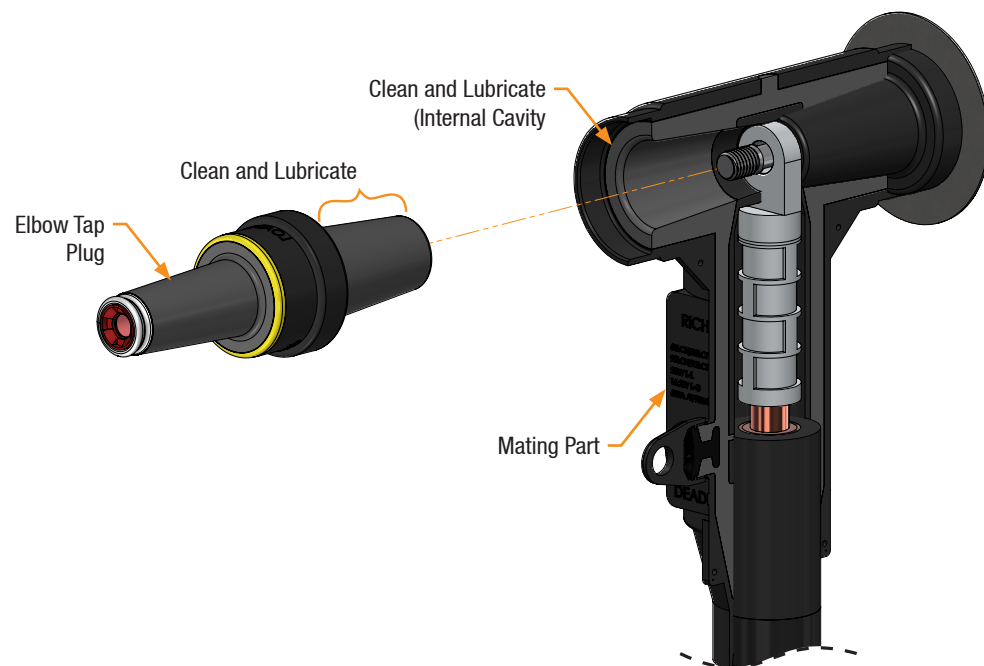
1

Preparing ETP

- A. Except in cases where stud is factory-installed into ETP, hand-tighten stud fully into appropriate mating part or bushing (this step is performed during installation of Deadbreak Elbow or Bushing Extender, before being mounted to bushing as shown below).



- B. Clean and lubricate (using supplied or approved silicone grease) the mating part interface and ETP interface as shown.

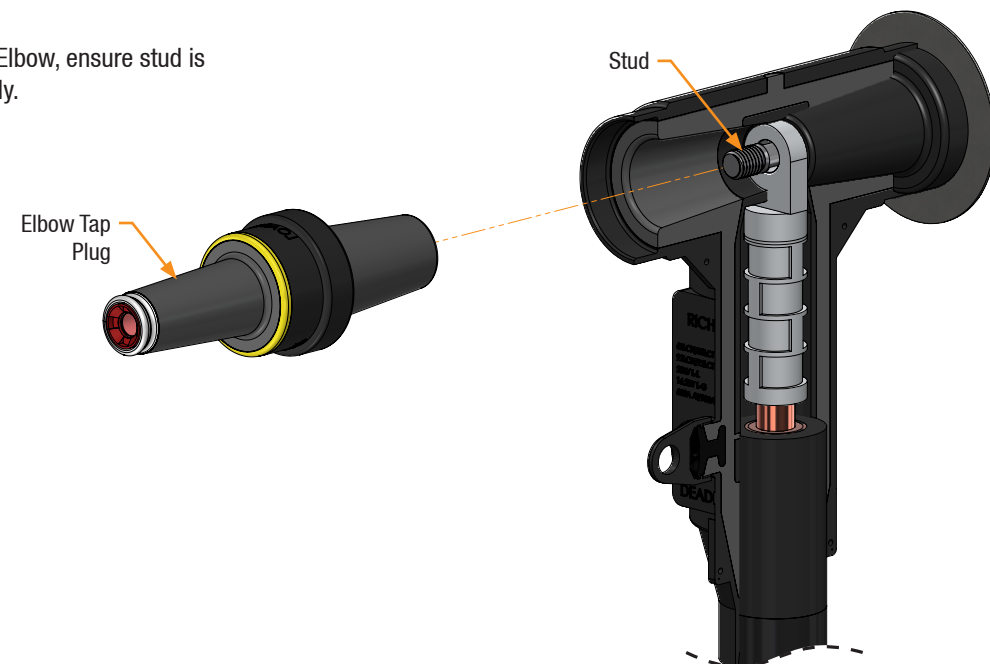


2

Inserting ETP



- A. Insert ETP, engage threads, and hand-tighten.



3

Tightening ETP

- A. Insert hex tool (P6AT or equivalent $\frac{3}{8}$ " hex tool) through loadbreak interface and engage hex broach.
B. Tighten ETP to 50-60 ft. lbs.

