

Installation Instructions

Spiking Stem

Applicable Catalog Prefix

15/25/35kV

93DSS



WARNING

- System must be de-energized during installation or future operation of this product or its components.
- Do not touch or move energized connectors or components by hand.
- Excess distortion of the assembled connector may result in its failure.
- Failure to follow these instructions will result in damage to the connector and serious or fatal injury.
- This product should only be installed and/or operated by trained personnel in accordance with normal and safe work procedures.
- Variations in equipment or configuration or work procedures may not be covered in these instructions.
- Please contact Richards Manufacturing for any additional questions.

KIT CONTENTS

Standard kits may include the following. Custom kits may vary.

Check package contents to be sure they are complete, undamaged, and properly sized for the application.



Cold Shrink Sleeve

OR

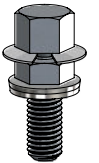


Joint Sleeve

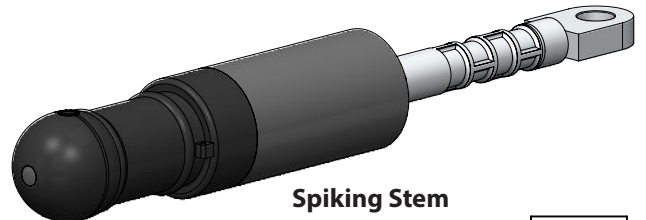


Regular Bolt

OR



Barrier Bolt



Spiking Stem

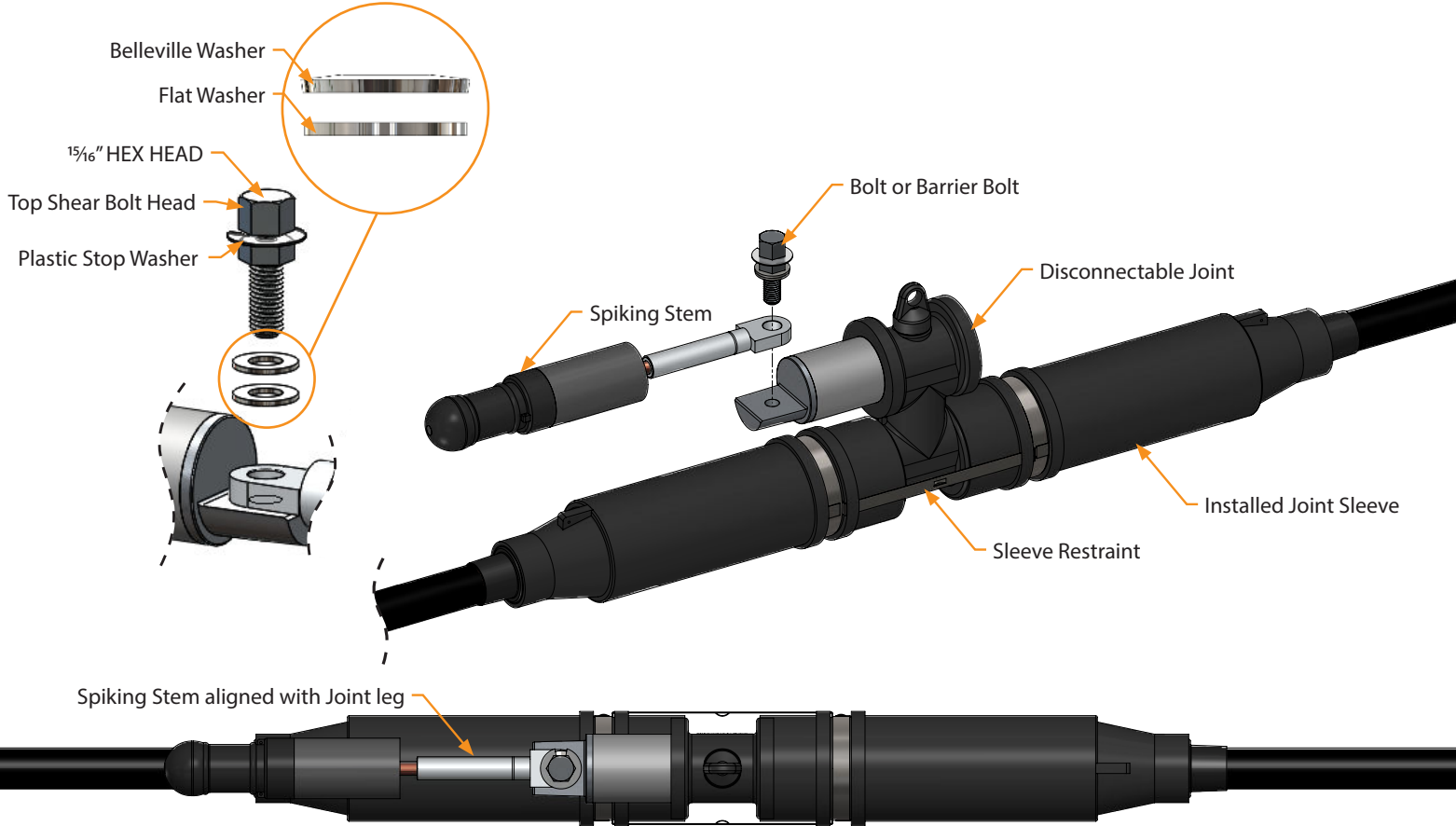


Silicone Lubricant

1

Positioning Spiking Stem

- A. Align the lug with the threaded hole on the Disconnectable Joint.
- B. Insert bolt through lug with washers installed as shown below and hand tighten.
- C. Ensure Spiking Stem is aligned with joint leg.



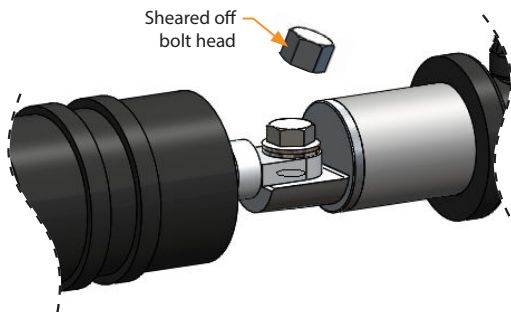
CHECK: Confirm Spiking Stem is aligned with the joint leg

2

Tightening Bolt

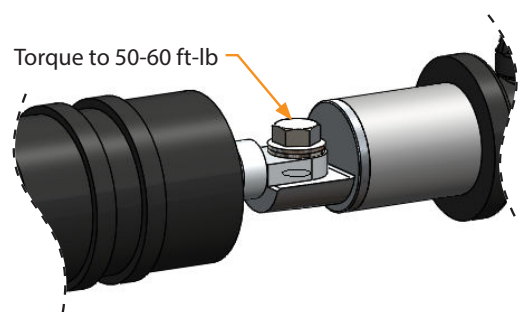
For Barrier Bolt

- A. Tighten bolt head with 15/16" socket head until bolt head shears off as shown below.



For Standard Bolt

- A. Tighten with 15/16" socket head to 50-60 ft-lb.



3

Installing Sleeve

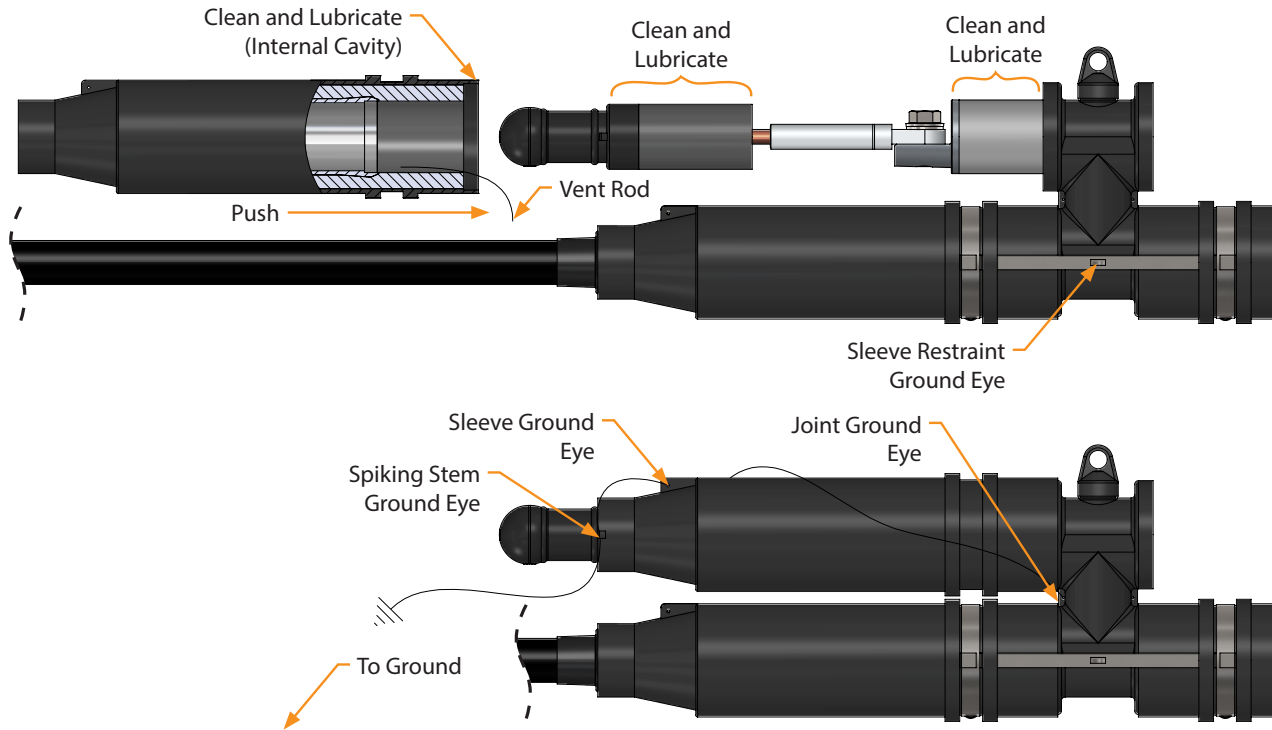
For Standard Sleeves

- A. Clean and lubricate the Spiking Stem, Joint Interface, and Sleeve Interface.
- B. Insert Vent Rod into sleeve as shown below.
- C. Push sleeve onto joint, ensuring it is fully seated on the interface.
- D. Remove vent rod.



WARNING: Remove vent rod. Failure to remove will result in electrical failure.

- E. Install Sleeve Restraints or Interface Clamps according to applicable supplemental step found at the end of this instruction sheet.
- F. Connect a copper drain wire (#14 AWG or larger) through all of the following ground eyes: Sleeve Restraint or Joint, Sleeve, and Spiking Stem. Be careful not to damage or tear ground eye.
- G. Connect wire to ground according to appropriate utility practice.

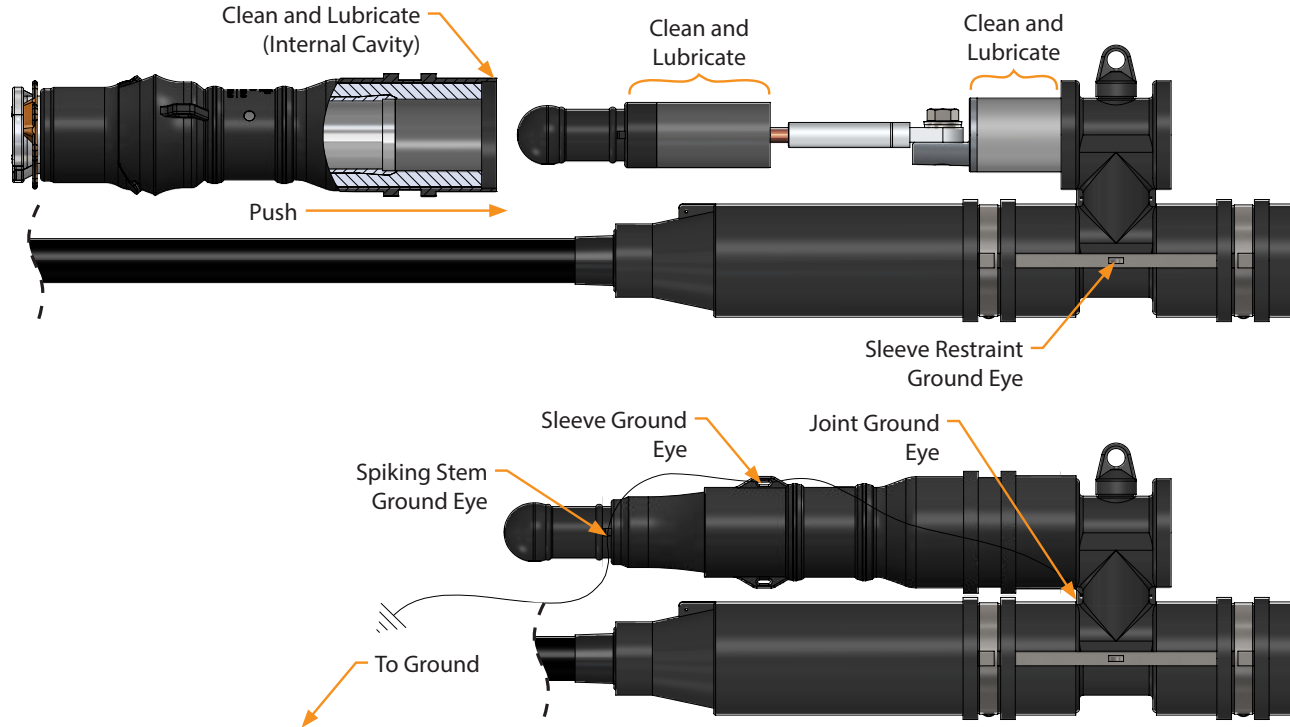


3

Installing Sleeve (continued)

For Cold Shrink Sleeves

- A. Clean and lubricate the Spiking Stem, Joint Interface, and Sleeve Interface.
- B. Push sleeve onto joint, ensuring it is fully seated on the interface.
- C. Install Sleeve Restraints or Interface Clamps according to applicable supplemental step found at the end of this instruction sheet.
- D. Remove core according to applicable supplemental step found at the end of this instruction sheet.
- E. Connect a copper drain wire (#14 AWG or larger) through all of the following ground eyes: Sleeve Restraint or Joint, Sleeve, and Spiking Stem. Be careful not to damage or tear ground eye.
- F. Connect wire to ground according to appropriate utility practice.



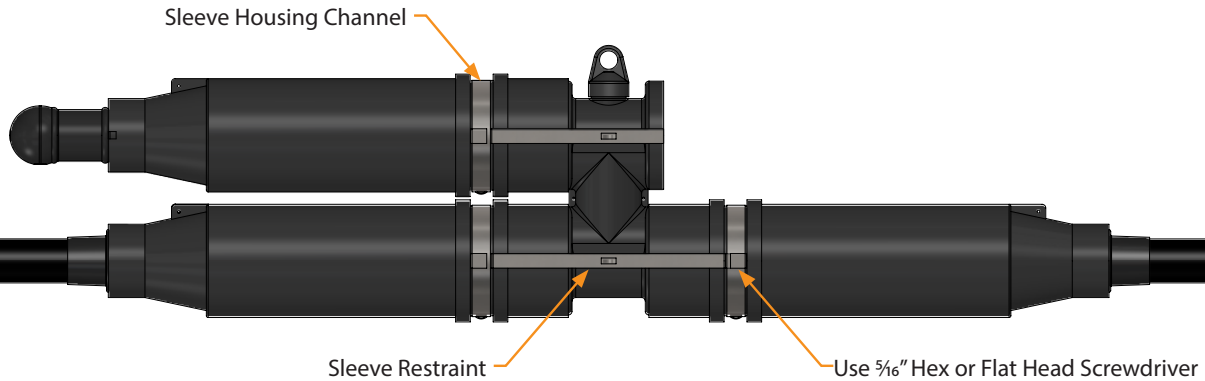
Supplemental Steps

Installing Sleeve Restraints

Note: This step applies for installations using sleeve restraints only. If not using sleeve restraints proceed to next step.

- Seat sleeve restraints in sleeve housing channels as shown below. Apply appropriate type of sleeve restraints.
- Tighten all sides of sleeve restraint with a $\frac{5}{16}$ " hex or a flat head screwdriver. Fully tighten until the screw "clicks". Sleeve restraint is designed to click when fully installed and will not over-tighten.

NOTE: If sleeves are not fully seated onto joint, sleeve restraints cannot be installed.



Installing Interface Clamps

Note: This step applies to 35kV only and is only applicable if sleeve restraints were not installed. If installation is below 35kV and/or sleeve restraints were installed, skip this step.



WARNING: If Sleeve Restraints are not included with kit, Interface Clamps MUST be installed on EACH sleeve.

- Seat interface clamps in all sleeve housing channels as shown.
- Tighten with a $\frac{5}{16}$ " hex or a flat head screwdriver. Fully tighten until the screw "clicks". Interface clamp is designed to click when fully installed and will not over-tighten.



Interface Clamp

Supplemental Steps (continued)

Removing Core

- A. Grasp removal ring. Push ring against core flange and twist so that cutting teeth breaks tape on both sides. Check that tape is broken.
- B. **To remove core by hand:** Proceed to Step D.
To remove core using P6AT-CS2 Tool: Insert one half of tool between removal ring and core flange. Pry core slightly away from housing.
- C. Insert second half of core removal tool between removal ring and core flange. Press handles inwards to eject core.
- D. Completely remove core from rubber housing by hand. **DO NOT** twist core while removing.
- E. Separate core into two halves and clip any plastic rings that remain on cable.

