

Installation Instructions

R-Stack Surge Arrester

Applicable Current Ratings

600A (Aluminum)

Applicable Catalog Prefix

35kV Class

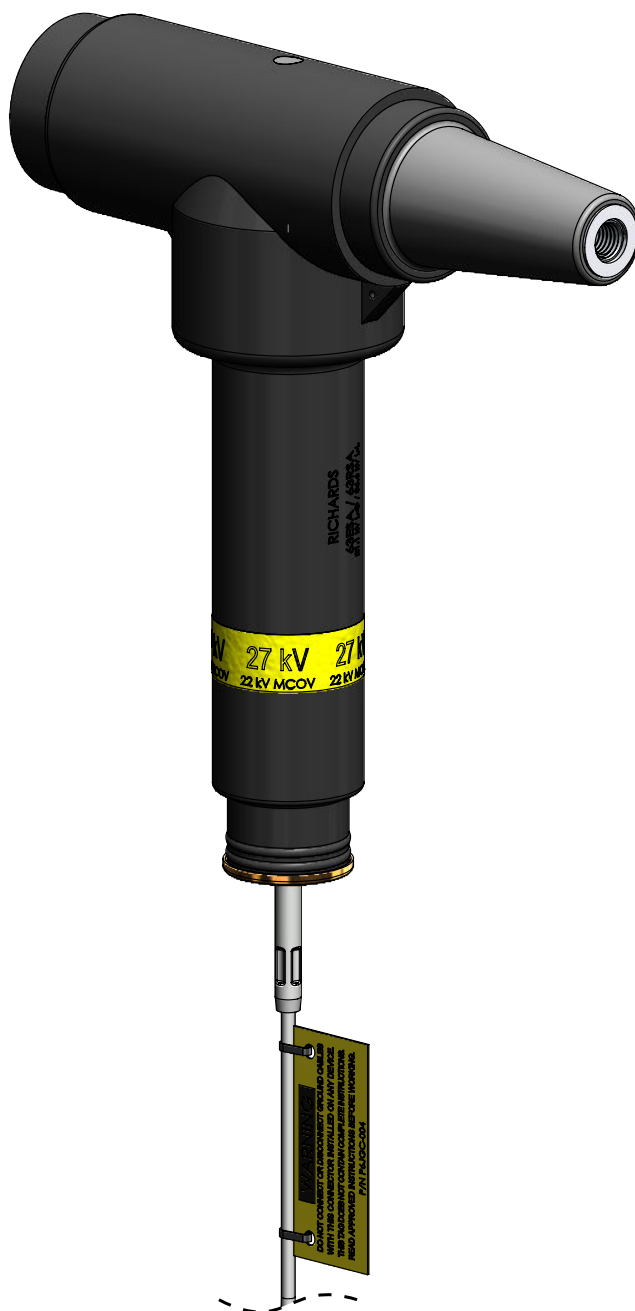
63RSA

Applicable MCOV/Duty Cycle ratings (kV)

19.5/24

22.0/27

24.4/30



**WARNING**

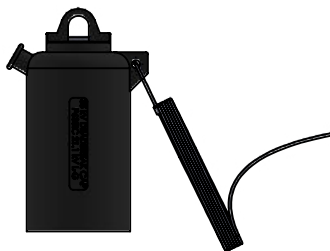
- System must be de-energized during installation or future operation of this product or its components.
- Do not touch or move energized connectors or components by hand.
- Excess distortion of the assembled connector may result in its failure.
- Failure to follow these instructions will result in damage to the connector and serious or fatal injury.
- This product should only be installed and/or operated by trained personnel in accordance with normal and safe work procedures.
- Variations in equipment or configuration or work procedures may not be covered in these instructions.
- Please contact Richards Manufacturing for any additional questions.

KIT CONTENTS

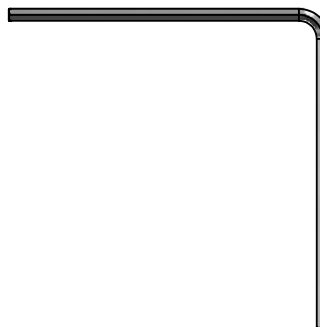
Standard kits may include the following. Custom kits may vary.
Check package contents to be sure they are complete, undamaged, and properly sized for the application.



**35kV R-Stack
Surge Arrester**



**35kV Deadbreak
Cap**



**Hex Tool
P650DAT**

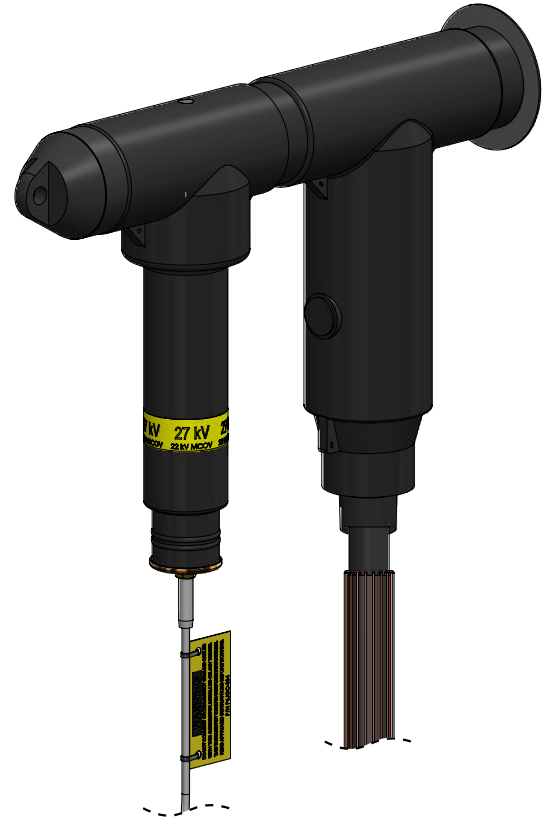


35kV Stud

**For Arrestor directly mounted
on bushing or mating part,
proceed below.**



**For Arrestor stacked on elbow,
proceed to page 6.**



Arrestor directly mounted on Bushing or Mating Part

1

Preparing Arrestor

- A. Remove Arrestor from bag.
- B. Ensure ground lead will reach system ground connection without extension.



WARNING: Do NOT extend ground lead beyond length provided.



WARNING: Do NOT coil ground lead.

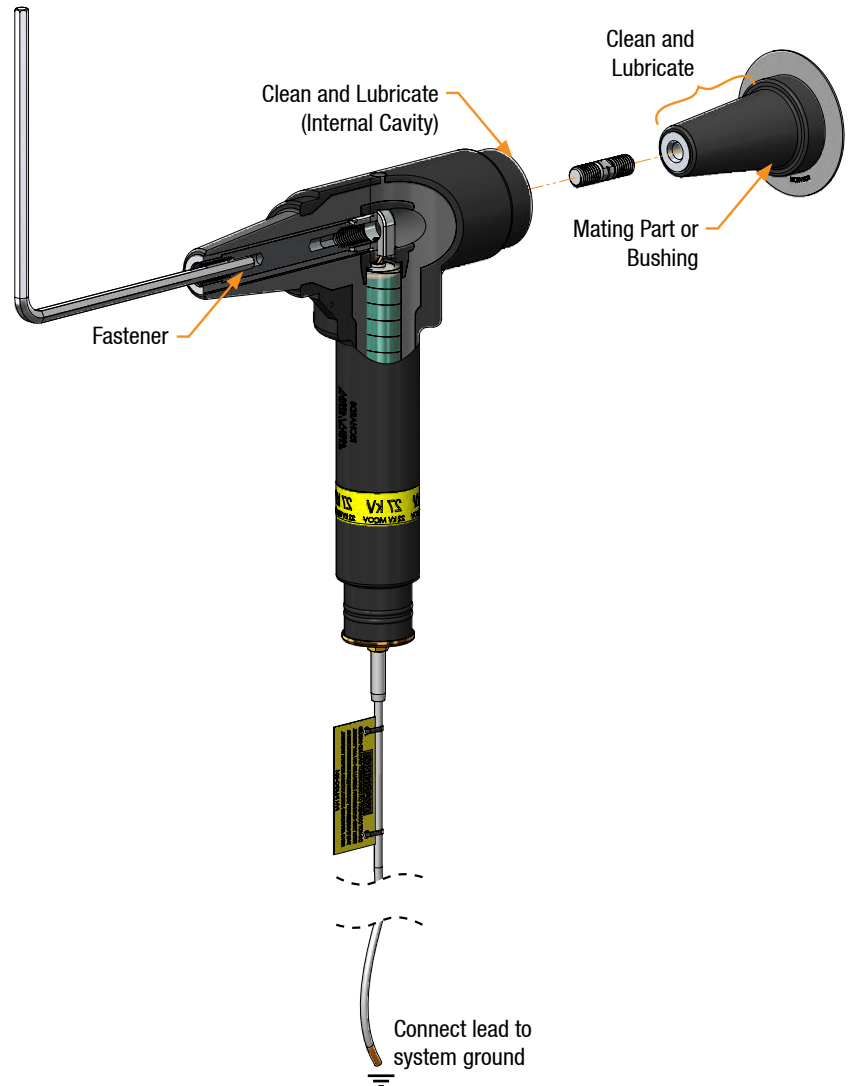
2

Installing Surge Arrester

- A. Hand-tighten stud into the appropriate mating part or bushing.
- B. Clean and lubricate (using supplied or approved silicone grease) deadbreak interface of Arrester and interface of mating part or bushing.
- C. Insert supplied hex tool through nose of Arrester and engage fastener.
- D. Push Arrester onto mating part.
- E. Rotate Fastener with hex tool to engage threads and tighten the assembly. Torque until hex tool bends (50-60 ft. lbs.).
- F. Connect Arrester ground lead to system ground.

CHECK: Confirm ground lead is NOT extended beyond length provided.

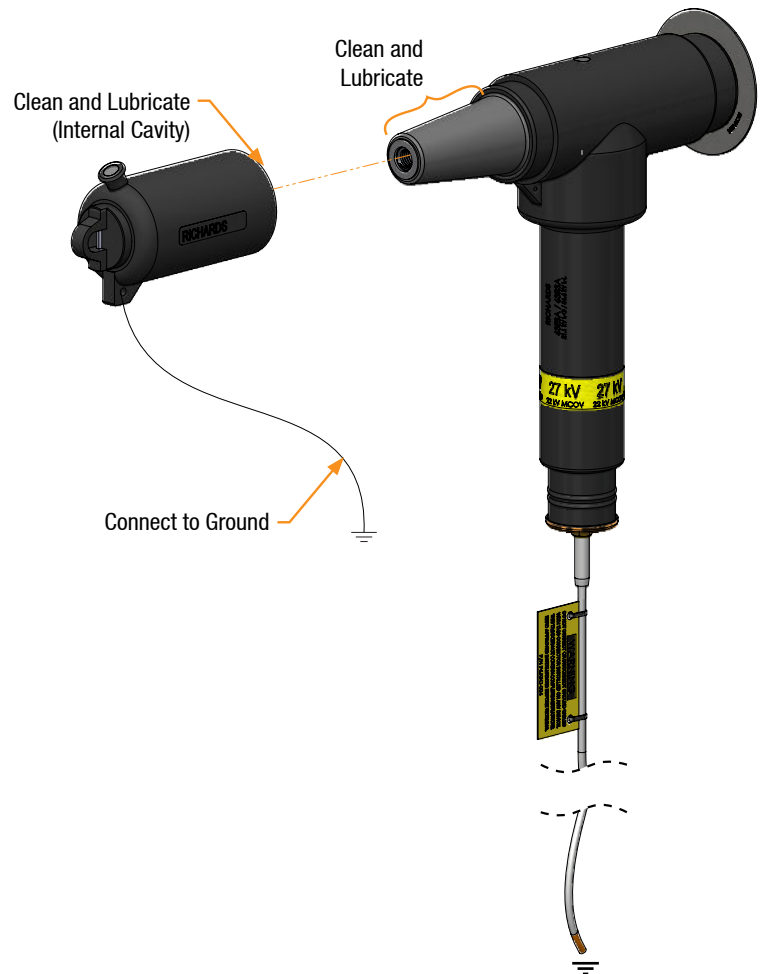
CHECK: Confirm ground lead is NOT coiled.



3**Installing Deadbreak Insulating Cap**

- A. Clean and lubricate Arrester interface and insulating cap.
- B. Thread insulated cap onto male interface clockwise until tightened.
- C. Uncoil pre-installed drain wire of Insulating Cap and connect to ground.

NOTE: Orientation of the arrester must be installed as shown with the grounded end of the arrester pointed directly downward.

**Installation Complete**

Arrester Stacked on Deadbreak Elbow

1

Preparing Arrester

- A. Remove Arrester from bag.
- B. Ensure ground lead will reach system ground connection without extension.



WARNING: Do NOT extend ground lead beyond length provided.



WARNING: Do NOT coil ground lead.

2**Mating Arrester Configuration**

- A. Hand-tighten stud into the appropriate mating part or bushing.
- B. Assemble Deadbreak Elbow per applicable instructions and mount to mating part or bushing.
- C. Clean and lubricate (using supplied or approved silicone grease) nose of Arrester and internal cavity of Deadbreak Elbow.
- D. Insert supplied hex tool through deadbreak interface of R-Stack and engage fastener.



WARNING: Do not damage internal cavity of Arrester when inserting Hex Tool.

- E. Rotate Fastener with hex tool to engage threads and tighten the assembly. Torque until hex tool bends (50-60 ft. lbs.).
- F. Connect Arrester ground lead to system ground.

CHECK: Confirm ground lead is NOT extended beyond length provided.

CHECK: Confirm ground lead is NOT coiled.

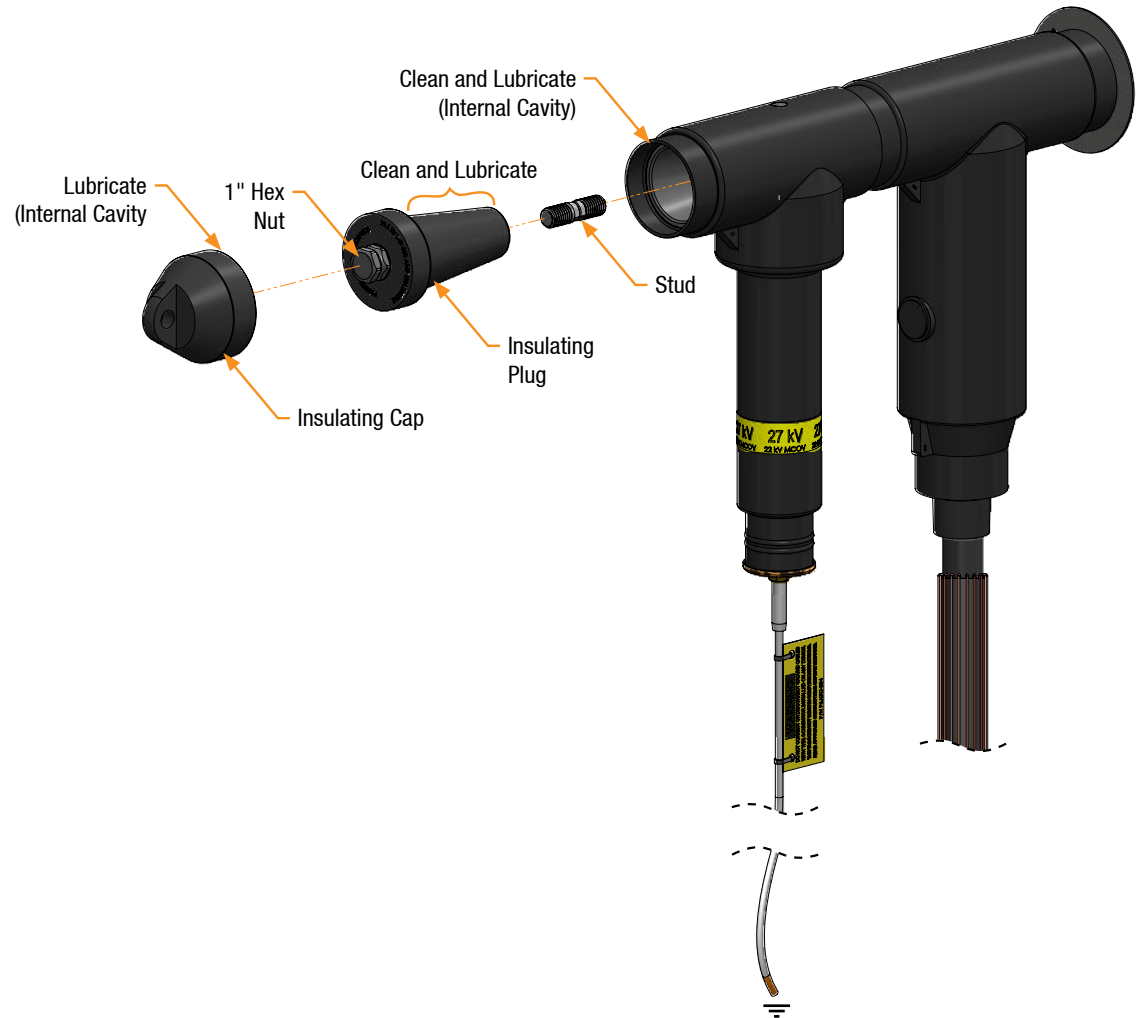
NOTE: Ground lead length can be shortened if needed.



3**Installing Insulating Plug and Cap**

- A. Clean and lubricate (using supplied or approved silicone grease) the Arrester interface and mating part interface as shown.
- B. Hand-tighten stud into insulating plug.
- C. Insert insulating plug, engage threads, and hand-tighten.
- D. Engage hex nut and tighten to 50-60 ft lbs using appropriate tool. Lubricate interior of insulating plug cap and push on to install.

NOTE: Orientation of the arrester must be installed as shown with the grounded end of the arrester pointed directly downward.

**Installation Complete**