

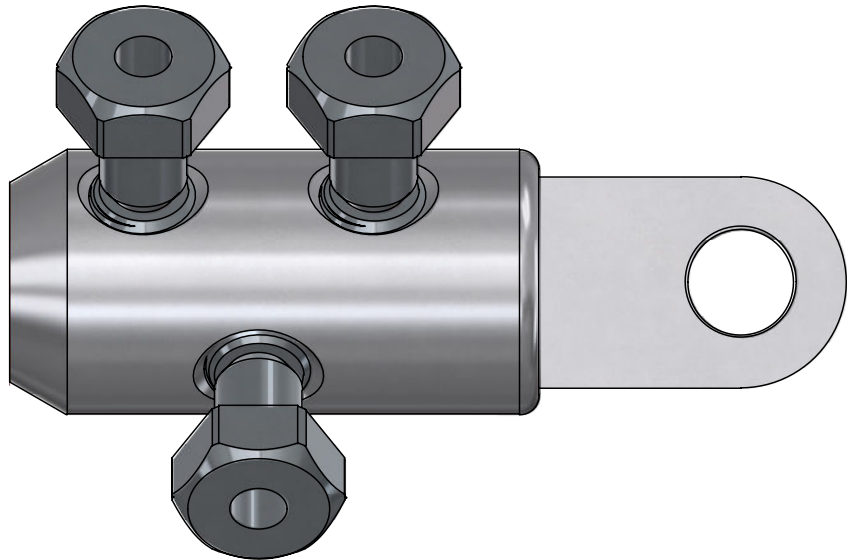
Deadbreak Size Sensitive Lug

Product Data Sheet

Richards P6ALS Series Size Sensitive Lugs are current carrying components, rated for use on Aluminum conductor. The P6ALS features shear bolts that are designed to break below the surface of the bolt, and are equipped with a 5/16" hex broad for easy removal. The P6ALS Series Lugs are used with IEEE 386 components such as 600A Deadbreak Elbows and Disconnectable Joints.

P6ALS Series Lugs are qualified to the following standards:

- ANSI C119.4



Nominal Use Range Chart

Cable Size		Size "X"	Barrel O.D. (in.)
Stranded Compressed	Compact		
500 MCM	600 MCM	18	1.725
650 MCM	750 MCM	211	1.725
750 MCM	900 MCM	23	1.725
900 MCM	1000 MCM	26	2.275
1000 MCM	—	28	2.275
1250 MCM	—	29	2.275
1500 MCM	—	30	2.275

Continuous Current Rating

Aluminum*	600A
-----------	------

*For use with aluminum conductor only

Basic Dimensions

