

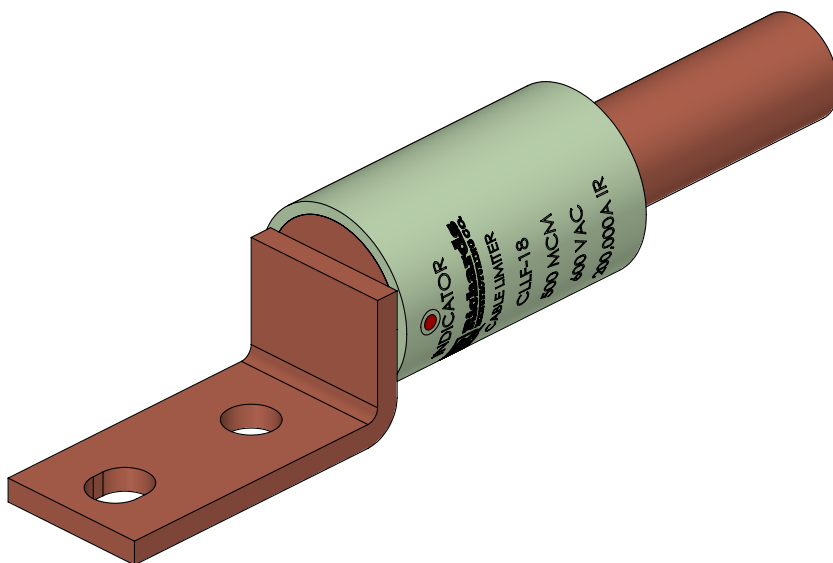
Current Limiting Lugs

Product Data Sheet

The Cable to Lug Pad Current Limiting Fuse is a terminal connector used to protect secondary cables (up to 600VAC) from damaging fault currents. The fuse is designed to clear faults quickly and significantly reduce let-through current magnitude.

The fuse body features a crimp barrel on one end and a 2-hole NEMA pad on the other. The center section, which houses the fuse elements, is encased in fiber glass for stability and strength. It comes equipped with an indicator light that activates when there has been a fault for ease of troubleshooting. It is also available as an assembly with an EPDM sleeve included to cover/insulate the limiter element and minimize hand taping.

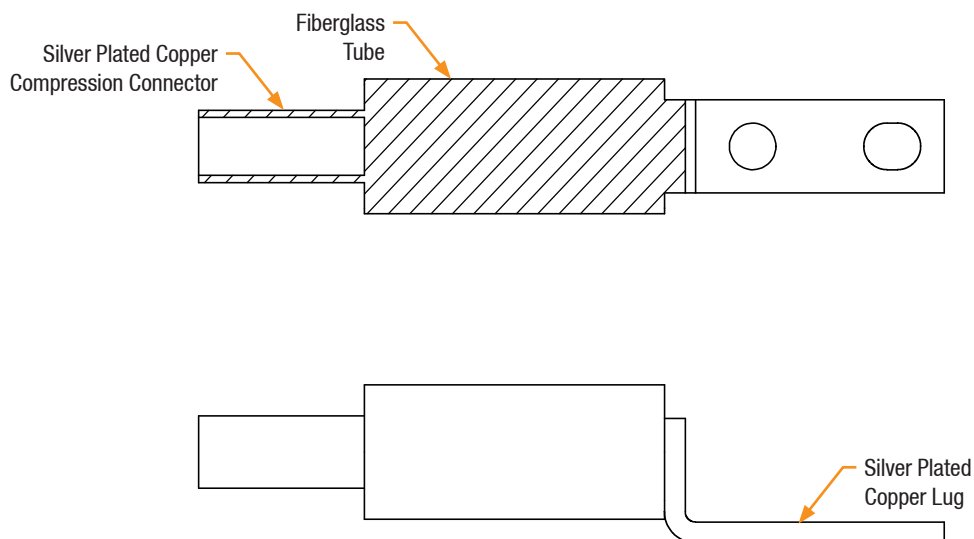
The CLLF is compatible with copper conductor, and is rated for 600VAC and 200,000A IR.



Features

- Current limiting device to quickly clear system faults
- Rated for 600VAC and 200kA interrupt rating (IR)
- Crimp barrel suitable for copper conductor only
- Suitable for underground applications
- Molded rubber insulating sleeve available (see LLS Series)
- Indicator light activates in the event of a fault

Basic View



Current Limiting Lugs

Product Ratings

| Part Number | Cable Size | Compatible Sleeve |
|-------------|------------|-------------------|
| CLLF-12 | 4/0 AWG | LLS4/0 |
| CLLF-15 | 350 MCM | LLS500 |
| CLLF-18 | 500 MCM | LLS500 |
| CLLF-23 | 750 MCM | LLS750-2 |
| CLLF-28 | 1000 MCM | LLS1000 |

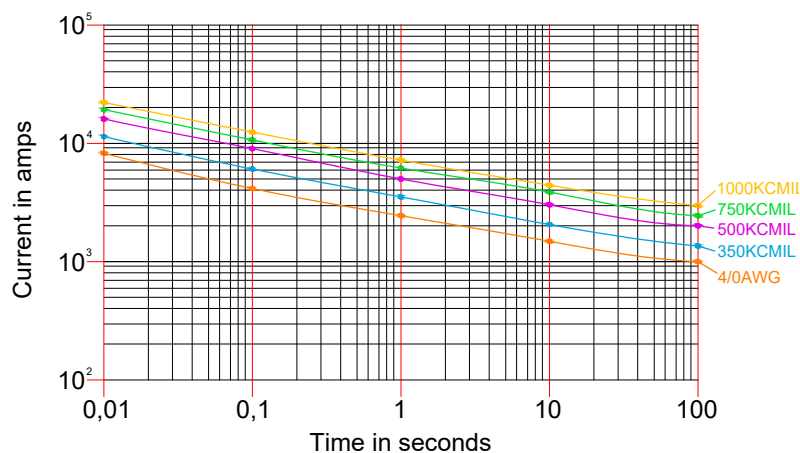
Product Ratings

| | |
|--------------------|-------------|
| Voltage | 600VAC |
| Conductor Material | Copper |
| Interrupt Rating | 200kA IR AC |

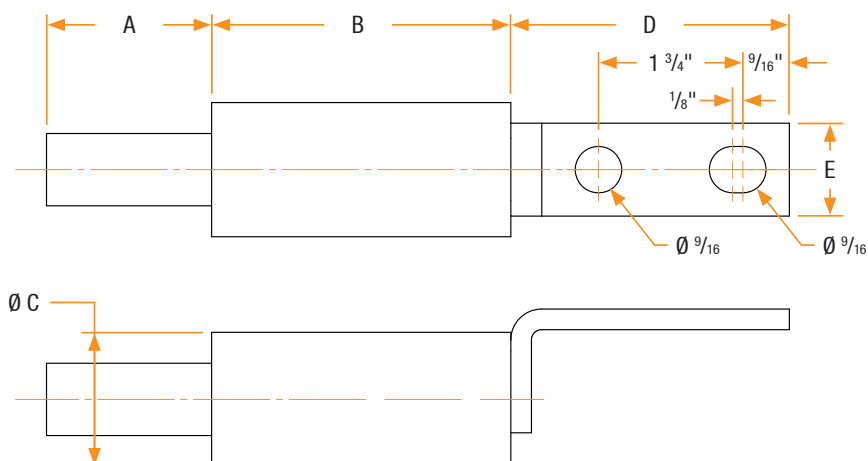
The CLLF qualified to the following industry standards:

- IEC 60269-2 Edition 5.0 2013-07
- UL 248-1: 2011

Time - Current Characteristics



Dimensional View



| Part Number | Cable Size | A | B | C | D | E |
|-------------|------------|------|------|------|------|-------|
| CLLF-12 | 4/0 AWG | 1.75 | 3.63 | 1.44 | 3.38 | 1.125 |
| CLLF-15 | 350 MCM | 2.0 | 3.63 | 1.63 | 3.38 | 1.125 |
| CLLF-18 | 500 MCM | 2.88 | 3.08 | 1.88 | 3.38 | 1.63 |
| CLLF-23 | 750 MCM | 3.5 | 3.75 | 2.5 | 3.5 | 2.0 |
| CLLF-28 | 1000 MCM | 3.5 | 3.75 | 3.0 | 3.5 | 2.0 |