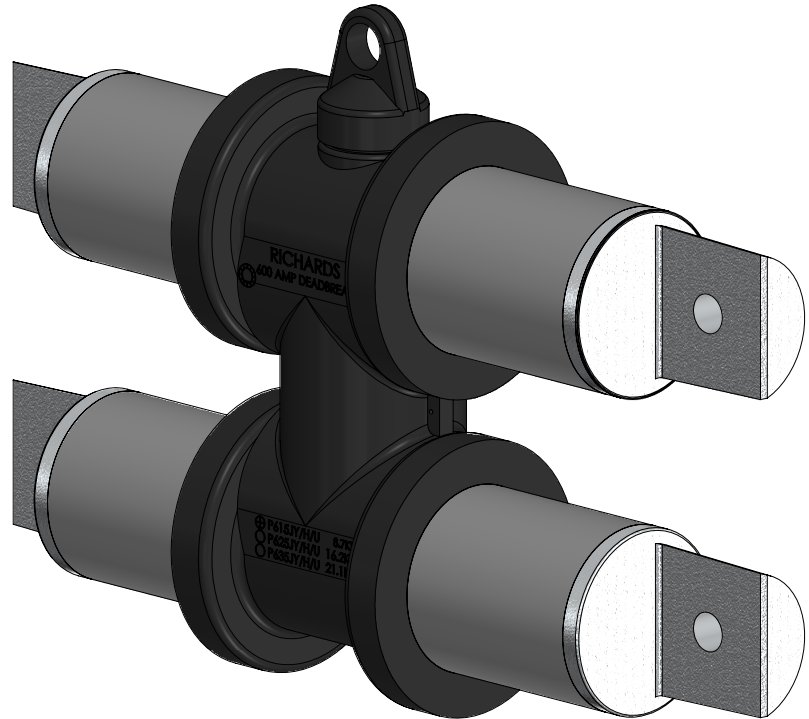


35kV Disconnectable "H9" Bus

Product Data Sheet

The Richards Disconnectable "H9" Bus is identical to a standard Disconnectable "H" Bus except the metallic bus contact has spades rotated 90 degrees from their standard orientation. This rotation facilitates alignment with the spade of cable lugs. The spades are oriented towards the cable splicer and the bolts can be engaged head on, as opposed to from an awkward position in-between bus positions.

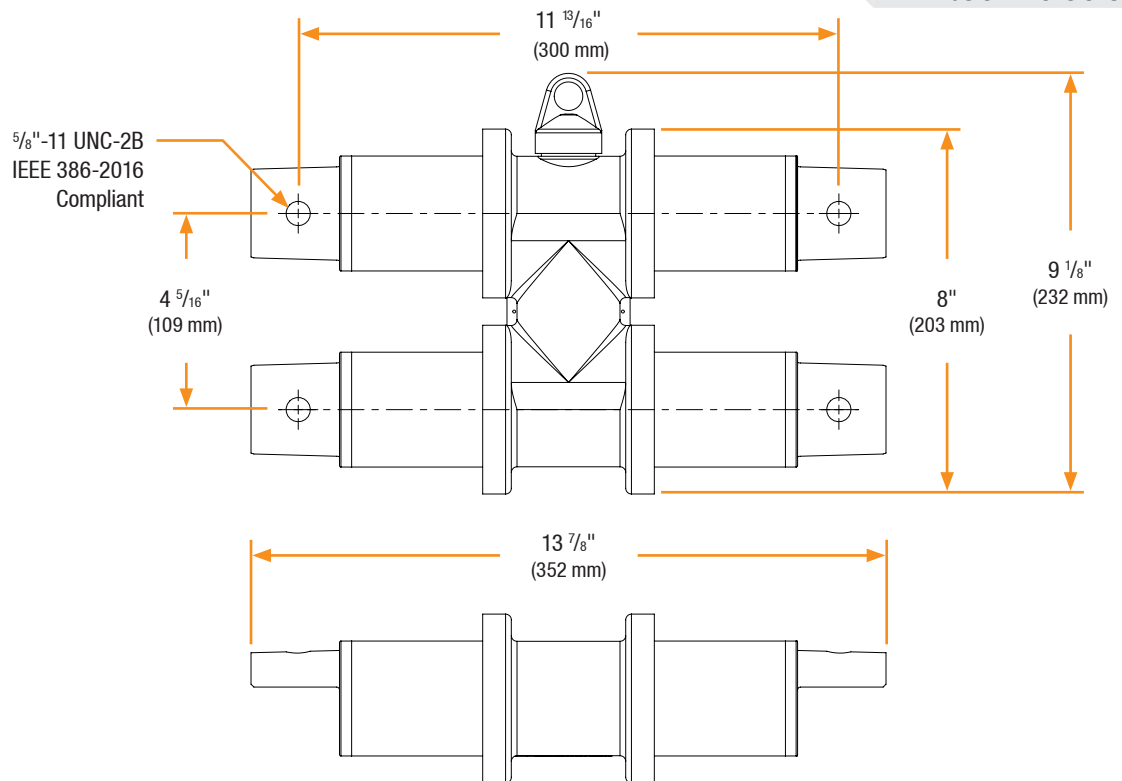
The Disconnectable Joint Bus is composed of a high-conductivity metallic bus contact overmolded with EPDM rubber. The various positions of the Bus allow for interconnection of medium voltage cables in an ultra-low-profile configuration. Accessories are also available for insulating, isolating, spiking and grounding.



Features

- Injection Molded & Peroxide-Cured EPDM Rubber
- Designed, Molded, and Tested in the USA
- Fully-Shielded/Deadfront
- Submersible
- Dependable Multi-Way Splice
- Low-profile, space-saving splicing solution
- Modular design
- Rotated Spades (90 degrees)

Basic Dimensions

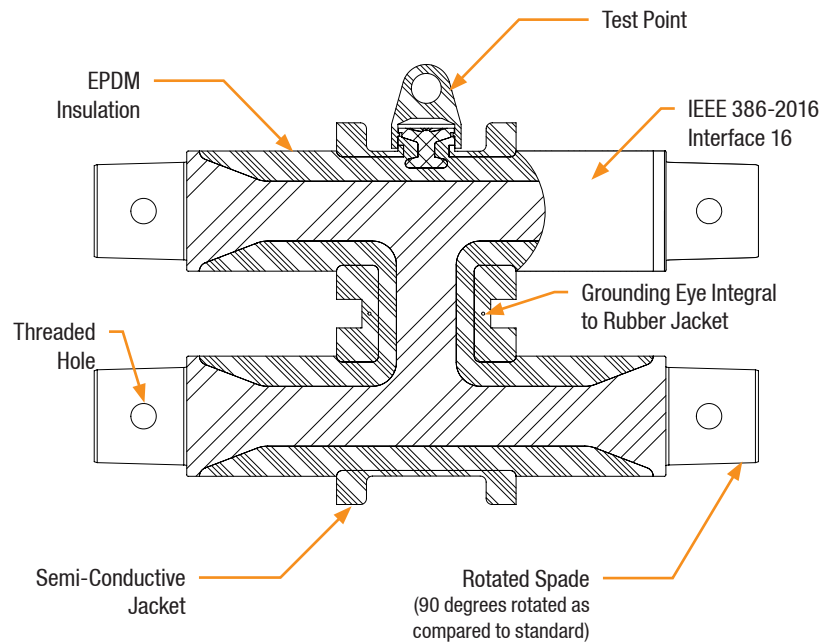


35kV Disconnectable "H9" Bus

Related Products

| | |
|---|--|
| P635JS 35kV Disconnectable Joint Sleeve | P635JSCS 35kV JSCS Series Cold Shrink Sleeve |
| 92DSS0 35/35kV Spiking Stem Assembly | |
| P635JIC 35kV Joint Insulating Cap | P6JGC 35kV Joint Grounding Cap |
| P6JPB Barrier Bolt | |
| P6AL-X Aluminum Compression Lug | P9CU-X Copper Compression Lug |
| P6ALR-X Aluminum Range Taking Lug | P7ALCU-X Copper-Top Compression Lug |

Detail View



Restraints & Tools

Compatible with the following restraints:

JRI

JRF

Compatible with the following tools:

P6JAT1

P6JAT3

Production Testing

IEEE requires a Partial Discharge test and choice between AC withstand and Impulse.

Richards runs 3/3 tests on *all* Medium Voltage products governed by IEEE 386. [®]

100% Routine Electrical Test:

- Partial Discharge
- AC Withstand
- Impulse Withstand

Product Ratings

Voltage Ratings

| | |
|---|------------------------|
| Maximum Voltage Rating – (phase to ground) | 21.1kV |
| Corona Voltage Level – (partial discharge extinction voltage) | 26kV |
| AC Withstand – (1 minute) | 50kV |
| Impulse-Withstand Voltage – (BIL) | 162kV BIL [®] |

Continuous Current Ratings

| | |
|----------|------|
| Aluminum | 600A |
|----------|------|

Short-Time Current Ratings

| | |
|----------|---------------------------------------|
| Aluminum | 40kA, 10c. and 10kA, 3s. [®] |
| Copper | 40kA, 10c. and 10kA, 3s. |

The 35kV Disconnectable "H9" Bus is qualified to the following industry standards:

- IEEE Std 386: For Separable Insulated Connector Systems
- ANSI C119.4: For Electric Connectors
- IEEE Std 592: For Exposed Semiconducting Shields
- IEEE Std 404: For Cable Joints

[®] Exceeds IEEE 386 requirement