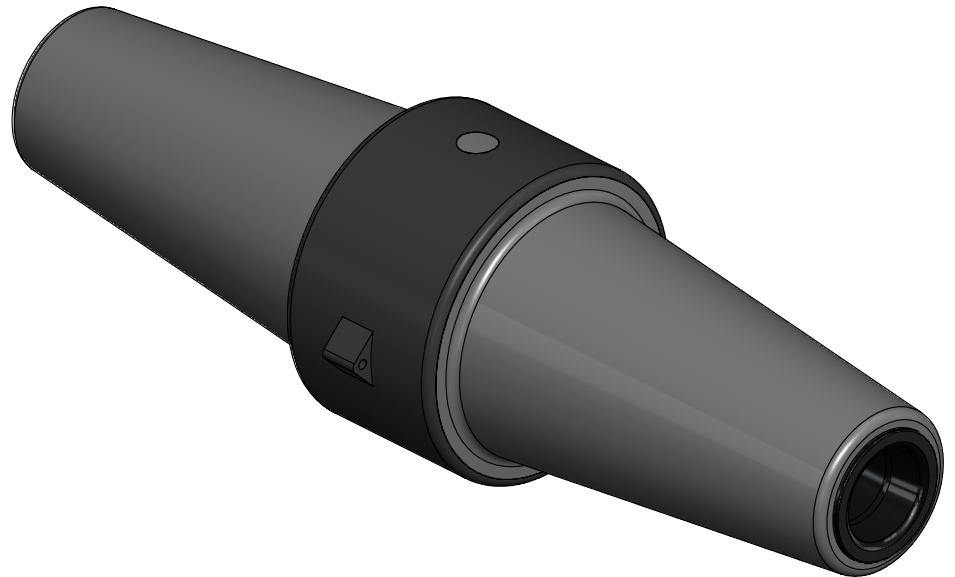


35kV Direct Test Plug

Product Data Sheet

The Richards Direct Test Plug is a medium voltage cable accessory equipped with a livebreak interface. This allows system operators to remove the insulating cap while the circuit is energized, providing a convenient direct test interface. The DTP was designed as a system along with accessories for insulating (DTIC Insulating Cap) and grounding (DTGC Grounding Cap). With the DTGC, a bolted grounding connection is established which increases short time current rating from 10ka (Loadbreak level) to 40kA with our Direct Test system.

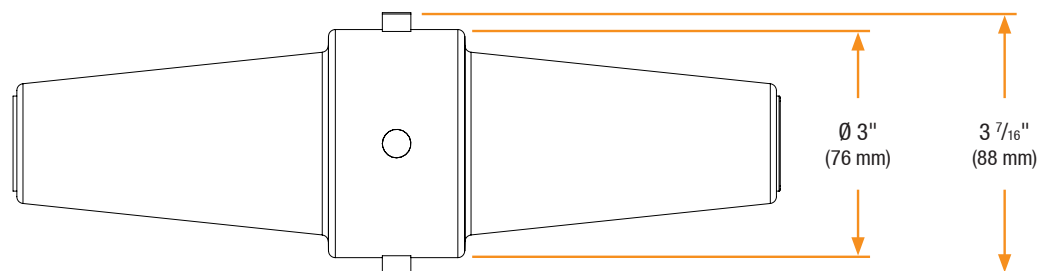
The DTP can be installed into any accessory equipped with standard IEEE interface as called out in the detail section of this data sheet. The Livebreak interface of the Direct Test Plug must be used with either the DTIC (for insulating) or DTGC (for grounding).



Features

- Livebreak Interface on one end and standard IEEE interface 13 on other
- Designed as a system for use with DTIC Insulating Cap or DTGC Grounding Cap
- Increased operational efficiency for grounding and safety procedures
- Increased short time current rating from 10kA (with Loadbreak) to 40kA

Basic Dimensions



35kV Direct Test Plug

Installation

35kV Direct Test Plug installation is covered by:
RP-II-DTP

Related Products

63LCN/63LCT

35kV Deadbreak Elbow

93LCN/93LCT

35kV Deadbreak Elbow

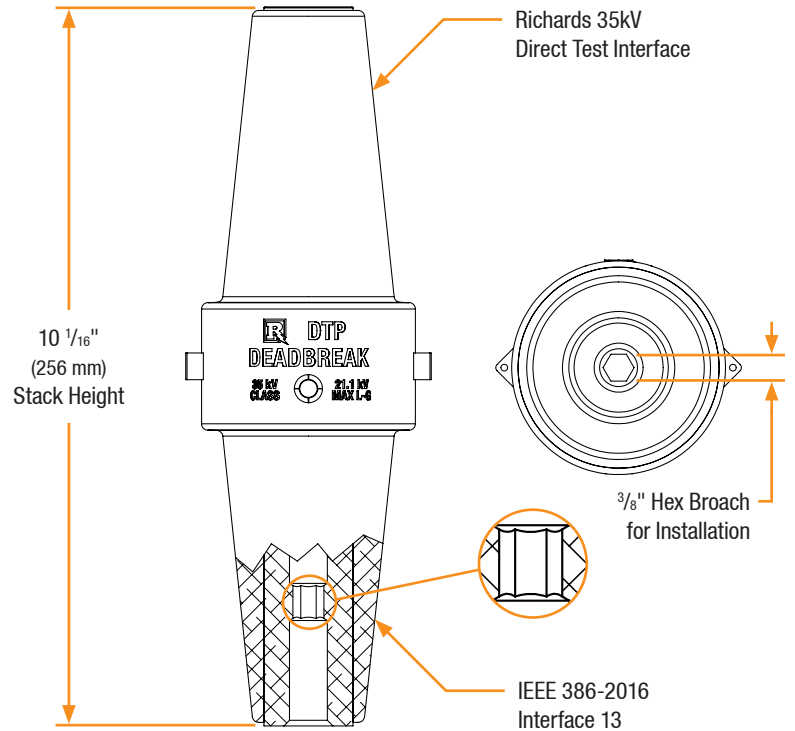
63DTIC

Direct Test Insulating Cap

63DTGC

Direct Test Grounding Cap

Detail View



Production Testing

IEEE requires a Partial Discharge test and choice between AC withstand and Impulse.

Richards runs 3/3 tests on **all** Medium Voltage products governed by IEEE 386. [®]

100% Routine Electrical Test:

- Partial Discharge
- AC Withstand
- Impulse Withstand

Product Ratings

Voltage Ratings	
Maximum Voltage Rating – (phase to ground)	21.1kV
Corona Voltage Level – (partial discharge extinction voltage)	26kV
AC Withstand – (1 minute)	50kV
Impulse-Withstand Voltage – (BIL)	165kV BIL [®]

Short-Time Current Ratings	
Aluminum	40kA, 10c. and 10kA, 3s. [®]
Copper	40kA, 10c. and 10kA, 3s.

The 35kV Direct Test Plug is qualified to the following industry standards:

- IEEE Std 386-2016: For Separable Insulated Connector Systems
- ANSI C119.4: For Electric Connectors
- IEEE Std 592: For Exposed Semiconducting Shields

[®] Exceeds IEEE 386 requirement