

Installation Instructions

DT Series Plug

Applicable Catalog Prefix

15/25/28KV

62DTP
62DTIC

35KV

63DTP
63DTIC

Applicable Voltage Classes

15/25/28kV
35kV

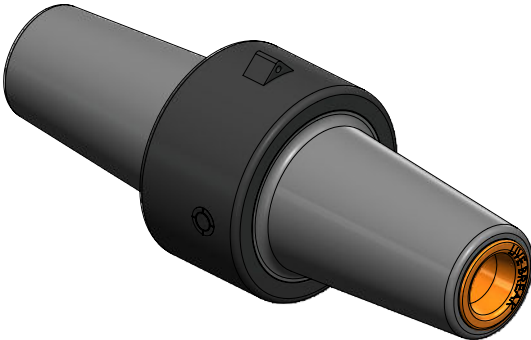


WARNING

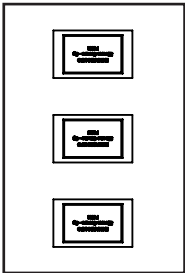
- System must be de-energized during installation of this product or its components.
- Do not touch or move energized connectors or components by hand.
- Excess distortion of the assembled connector may result in its failure.
- Failure to follow these instructions will result in damage to the connector and serious or fatal injury.
- This product should only be installed and/or operated by trained personnel in accordance with normal and safe work procedures.
- Variations in equipment or configuration or work procedures may not be covered in these instructions.
- Please contact Richards Manufacturing for any additional questions.

KIT CONTENTS

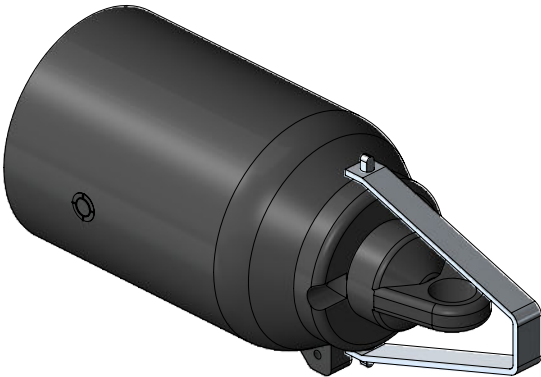
Standard kits may include the following. Custom kits may vary.
Check package contents to be sure they are complete, undamaged, and properly sized for the application.



DT Series Plug (DTP)



Grease Subunit Kit
(1) Kit



DT Series Insulating Cap (DTIC)

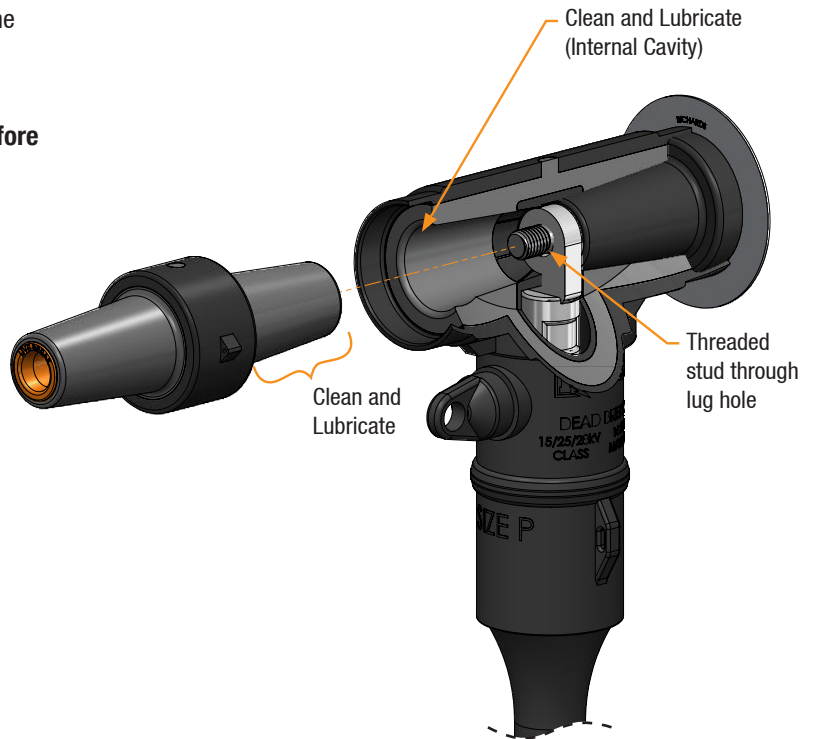
1 Installing DTP

- A. Clean and lubricate (using supplied or approved silicone grease) the elbow interface and plug interface as shown.



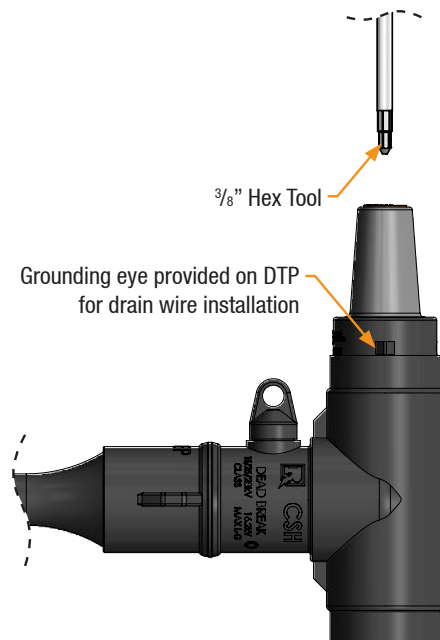
WARNING: Ensure stud is through lug hole as shown before tightening assembly.

- B. Insert DTP as shown, engage threads, and hand-tighten.



2 Proper Tightening Procedure

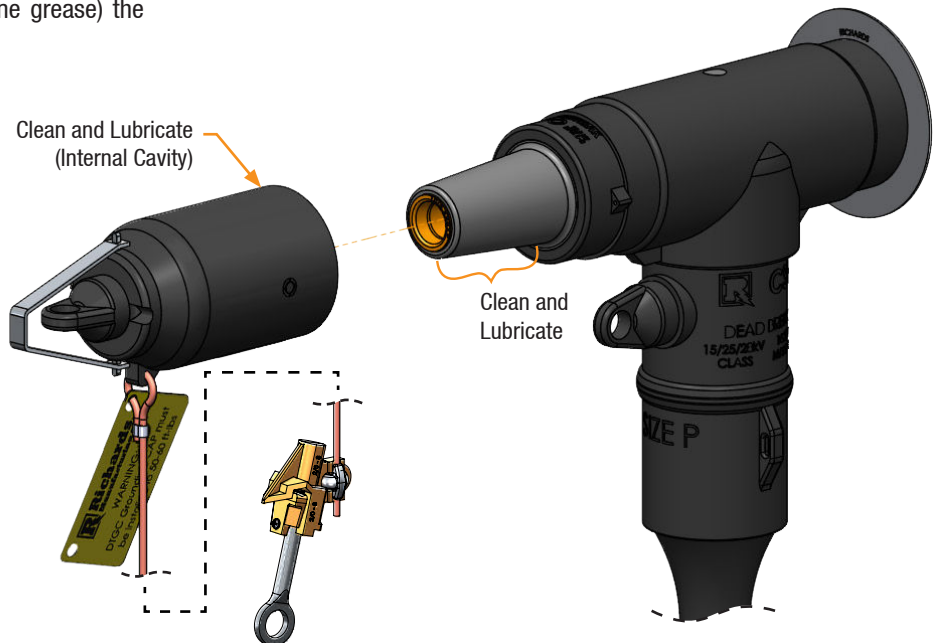
- A. Insert P6AT or equivalent $\frac{3}{8}$ " hex tool into accessory and engage hex broach.
B. Tighten to 50-60 ft. lbs. using appropriate tool.
C. Install drain wire from DTP grounding eye to elbow drain wire.



3

Preparing DTIC for installation

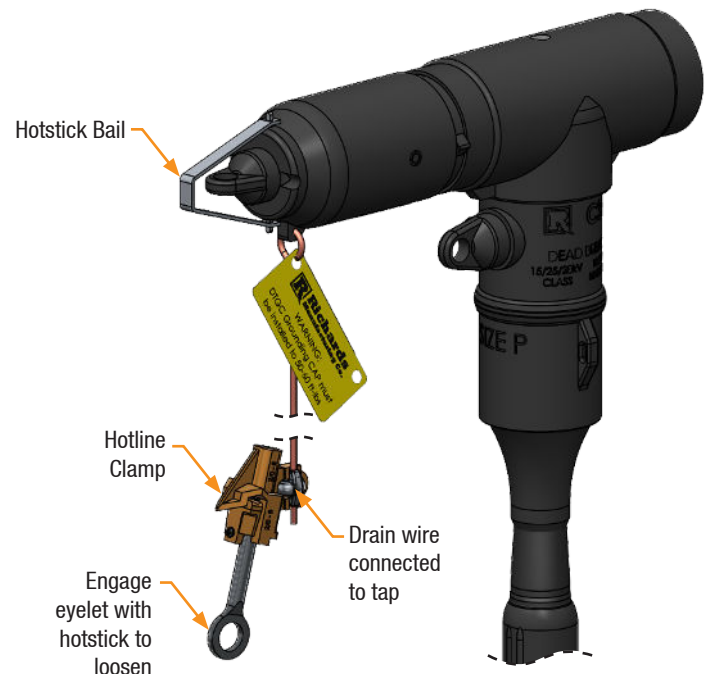
- A. Clean and lubricate (using supplied or approved silicone grease) the DTIC interface and DTP interface as shown.



4

Installing DTIC

- A. Fully open hotline clamp jaw leaving clamp attached to drain wire as supplied.
B. Using hot stick, grab the pulling eye/bail on the DTIC and place onto mating DTP interface.
C. Engage threads and tighten until reasonable resistance is felt. Torque to 15-20 ft-lbs. Do not overtighten.
D. Connect drain wire to system ground.



Installation Complete

For Operating Instructions See II-DTGC

