

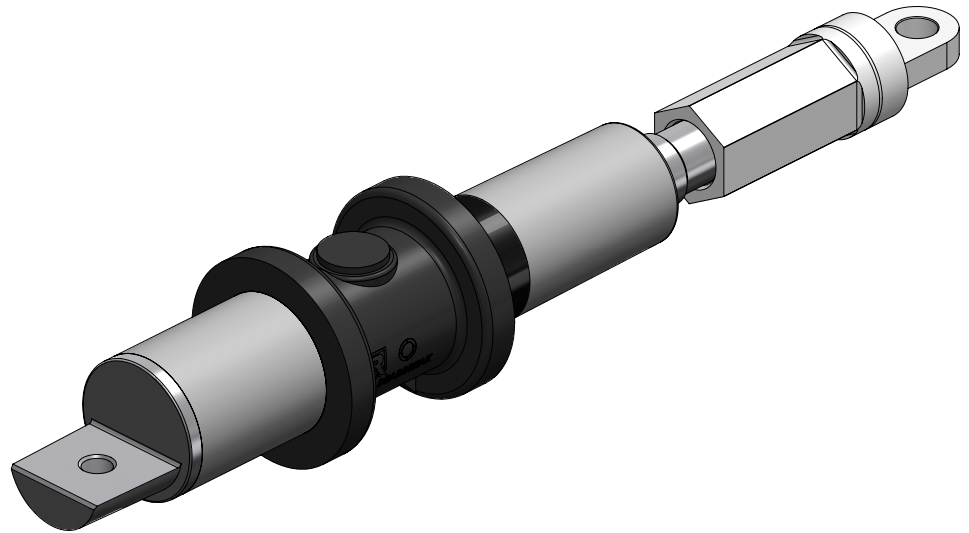
15/25/28kV Deadbreak Elbow Extension Adapter

Product Data Sheet

The Richards 15/25/28kV Deadbreak Elbow Extension Adapter provides a robust solution for extension of medium voltage power cable. Applications include extending a connection to reach new equipment (e.g. live front to dead front conversion) and replacing damaged cable/accessories.

The Adapter is a specialized bus which is designed to interface with a 15/25/28kV Deadbreak Elbow housing on one side, and a 15/25/28kV Disconnectable Joint Sleeve on the other. Richards JSCS Cold Shrink or traditional Richards Disconnectable Joint Sleeves can be utilized.

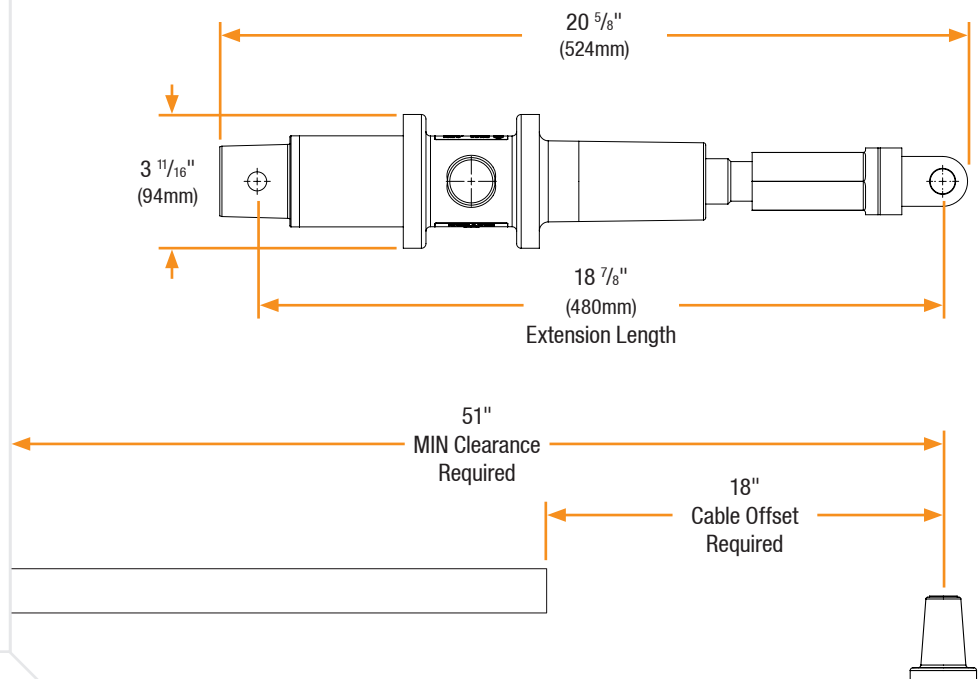
The Deadbreak Elbow housing mates with the equipment connection (switchgear/transformer bushing, deadbreak junction, etc.) and the Disconnectable Joint Sleeve provides an in-line transition to the power cable.



Features

- Injection Molded and Peroxide Cured
- Aluminum contact overmolded with EPDM rubber
- Extension length facilitates repair and equipment replacements/ upgrades
- Molded top interface designed to mate with 15/25/28kV Deadbreak Elbow housing
- Bottom Disconnectable Joint interface allows for in-line connection
- Factory-installed Lug

Basic Dimensions



15/25/28kV Deadbreak Elbow Extension Adapter

Installation

15/25/28kV Deadbreak Elbow Extension Adapter installation is covered by: **RP-II-625DE**

Related Products

P625HIP-STUD

15/25/28kV Aluminum Threaded Stud

P925HIP-STUD

15/25/28kV Copper Threaded Stud

62LCN/62LCT

15/25/28kV Deadbreak Elbow

92LCN/92LCT

15/25/28kV Deadbreak Elbow

P625JS

15/25/28kV Disconnectable Joint Sleeve

JSCS SERIES

15/25/28kV Cold Shrink Sleeve - all sizes

P625CA-W

15/25/28kV Cable Adapter

Production Testing

IEEE requires a Partial Discharge test and choice between AC withstand and Impulse.

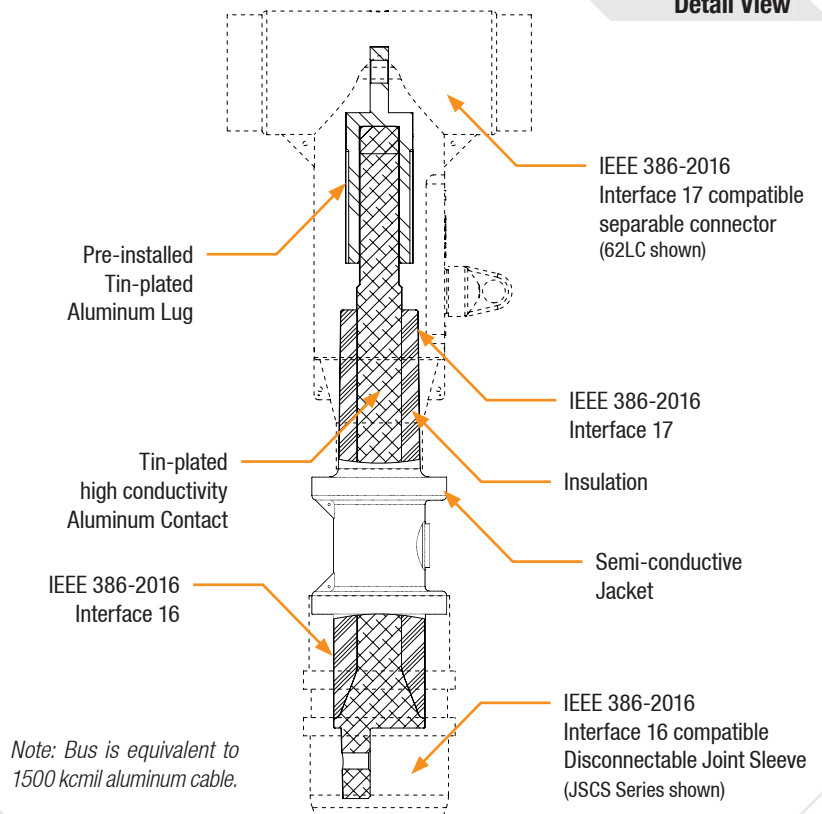
Richards runs 3/3 tests on *all* Medium Voltage products governed by IEEE 386. [®]

100% Routine Electrical Test:

- Partial Discharge
- AC Withstand
- Impulse Withstand

[®] Exceeds IEEE 386 requirement

Detail View



Product Ratings

Voltage Ratings	
Maximum Voltage Rating – (phase to ground)	16.2kV
Corona Voltage Level – (partial discharge extinction voltage)	22kV [®]
AC Withstand – (1 minute)	45kV
Impulse-Withstand Voltage – (BIL)	162kV BIL [®]

Continuous Current Ratings	
Aluminum	600A

Short-Time Current Ratings	
Aluminum	40kA, 10c. and 10kA, 3s. [®]

The 15/25/28kV Deadbreak Elbow Extension Adapter is qualified to the following industry standards:

- IEEE Std 386: For Separable Insulated Connector Systems
- ANSI C119.4: For Electric Connectors
- IEEE Std 592: For Exposed Semiconducting Shields