

# ETI

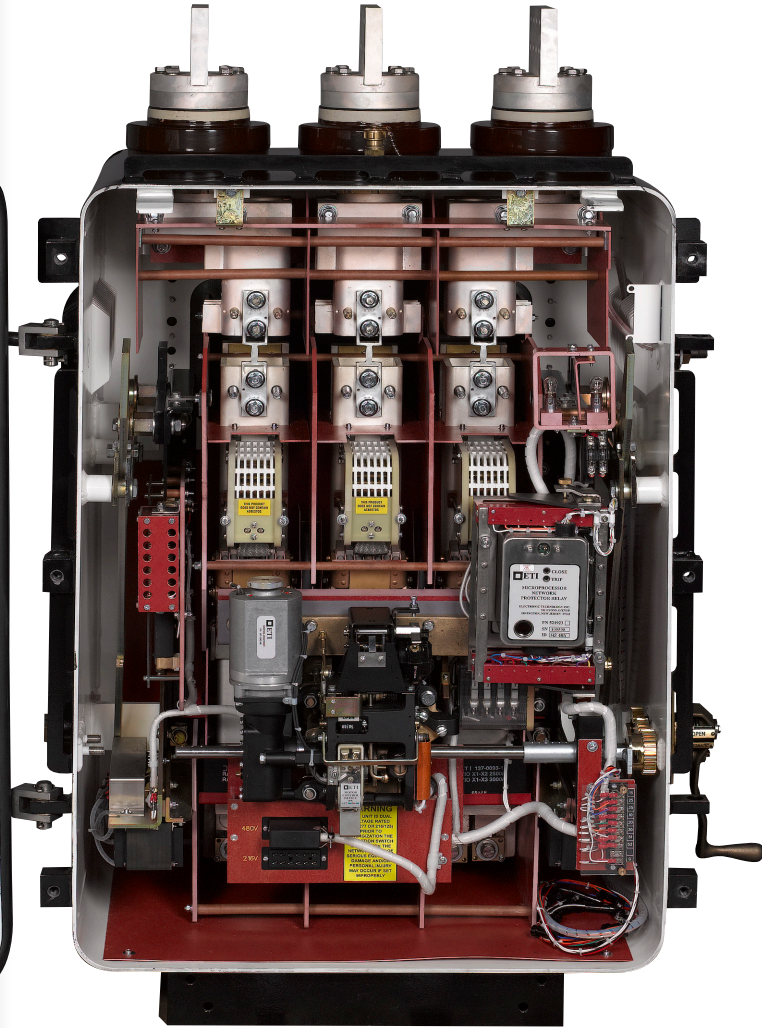
Electronic Technology Incorporated

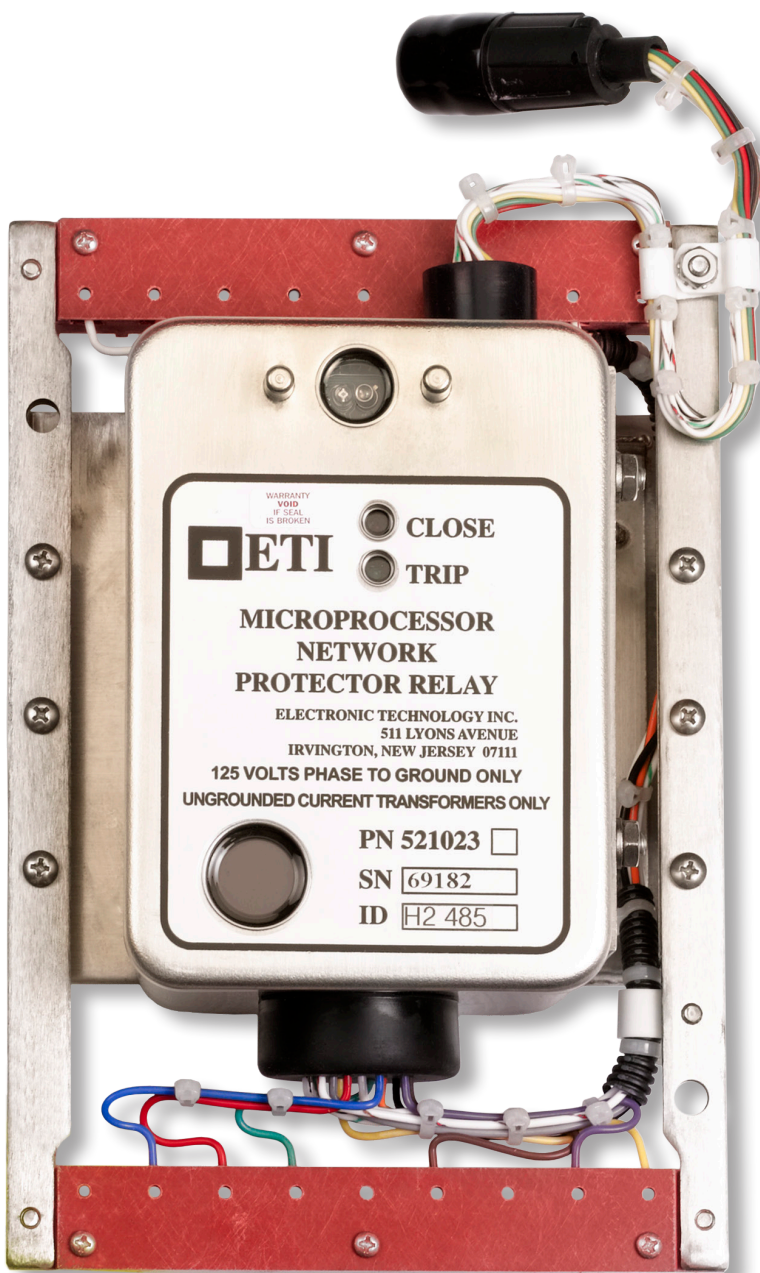
## Secondary Network Communications

PRODUCT CATALOG  
2017 EDITION









## Richards Manufacturing & ETI are the largest providers of network protectors in the World.

We can provide you with network protectors, fuses, relays, and cable limiters as well as a comprehensive monitoring system for secondary networks. Our monitoring system was specifically designed to meet the demands of customers like you and exceeds expectations both in terms of benefits and performance ...

- Easy to install
- Reliable
- Flexible
- Connects to any existing communicating system
- DNP3 (or any other common protocol) embedded into the relay. Easily incorporated into your existing SCADA system.
- Incorporates a variety of sensors to monitor:
  - Transformer pressure
  - Transformer oil temperature
  - Transformer oil level
  - Customer specific

## Systems Integration

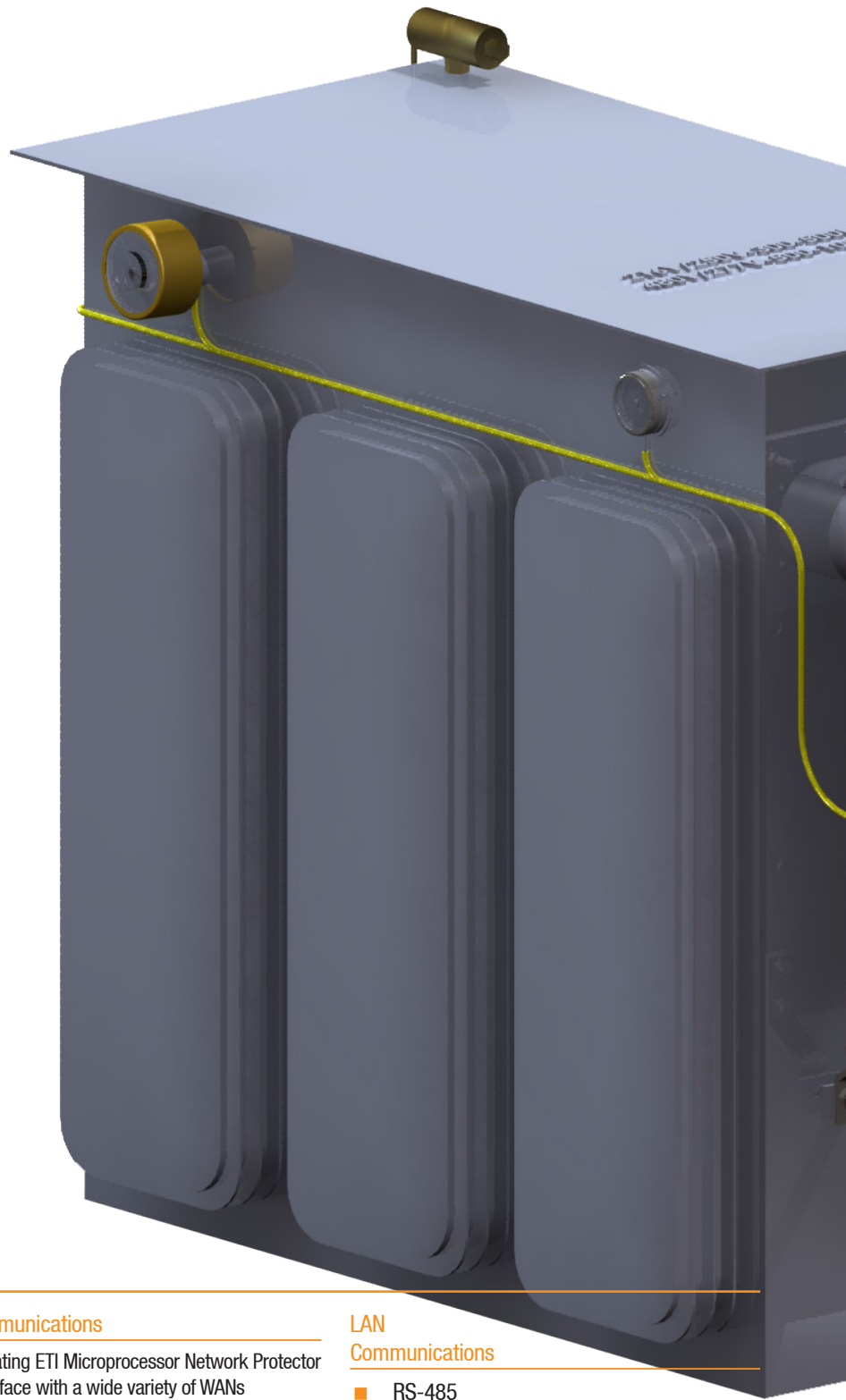
In addition to being a manufacturer, Electronic Technology Incorporated also provides design and installation services for automating entire underground network distribution services. ETI creates custom solutions that incorporate information from MNPR® relays, sensors, and other intelligent devices. ETI can also provide means for transmitting, reporting, storing and displaying that data.

ETI monitoring systems can be ordered with different options and features to best meet your particular needs. Consult the following pages for available offerings.

The basic monitoring system consists of the Communicating ETI Microprocessor Network Protector Relays (MNPR®) which will interface with your existing Wide Area Network (WAN). Virtually any WAN is compatible, from radio, to fiber optics, to phone line.

The ETI MNPR® communicates with your WAN via the Local Area Network (LAN) in each vault. Our basic system is an RS485 communicating relay that either plugs directly into a WAN device or into a RS485/232 converter. It also utilizes an RS485 serial link from the communicating relay. This allows multi-drop communications — up to 32 MNPR® relays can share one WAN device.

Simply use an Android™ device or a laptop to communicate with the MNPR® via a cable or Bluetooth optical head (cable, Android™ device and Bluetooth optical head are available from ETI). Android™ devices utilize Commander software which is available as a free download on Google Play. Laptops run the Field Pro software.



## NETWORK PROTECTOR

### Sensors/Indicators

- Vault Water Level
- Transformer Oil Level
- Transformer Temperature
- Transformer Pressure
- Protector Status
- Protector Housing Pressure
- Protector Handle Position
- Protector Water Sensor

### Auxiliary I/O

- Analog Inputs
- Digital Inputs
- Digital Outputs
- Custom Configurations

### WAN Communications

Communicating ETI Microprocessor Network Protector Relays interface with a wide variety of WANs

- Fiber Optics
- Radio
- Cellular
- Phone line

### Protocols

- DNP3
- Modbus
- Customer specific (i.e. SES-92)

### LAN

#### Communications

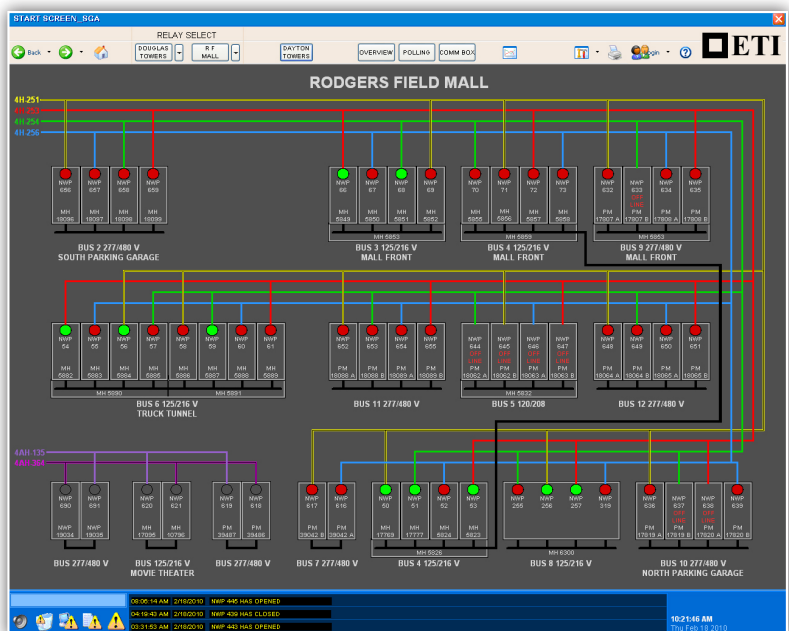
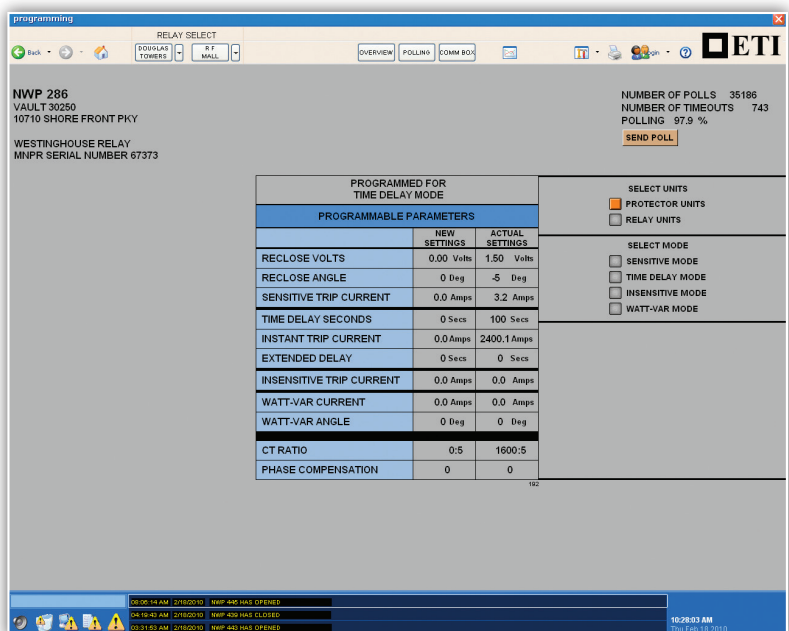
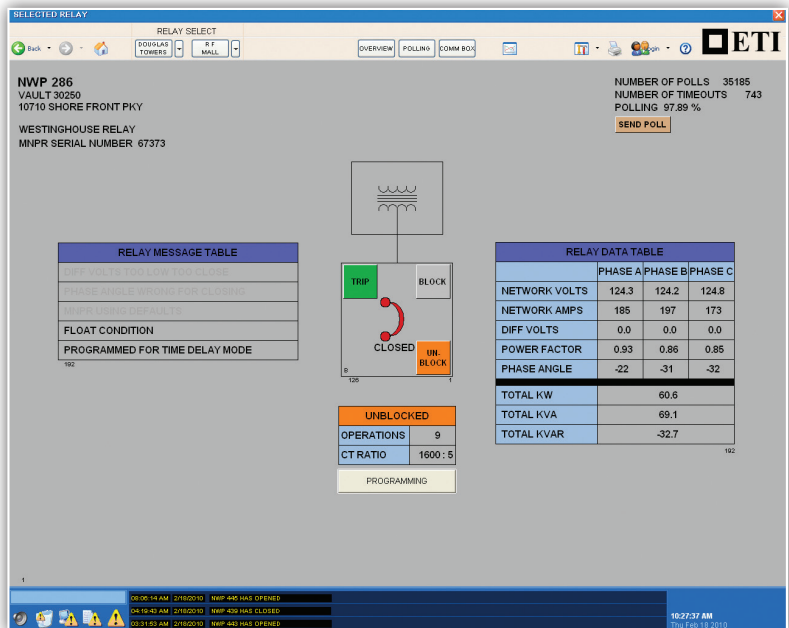
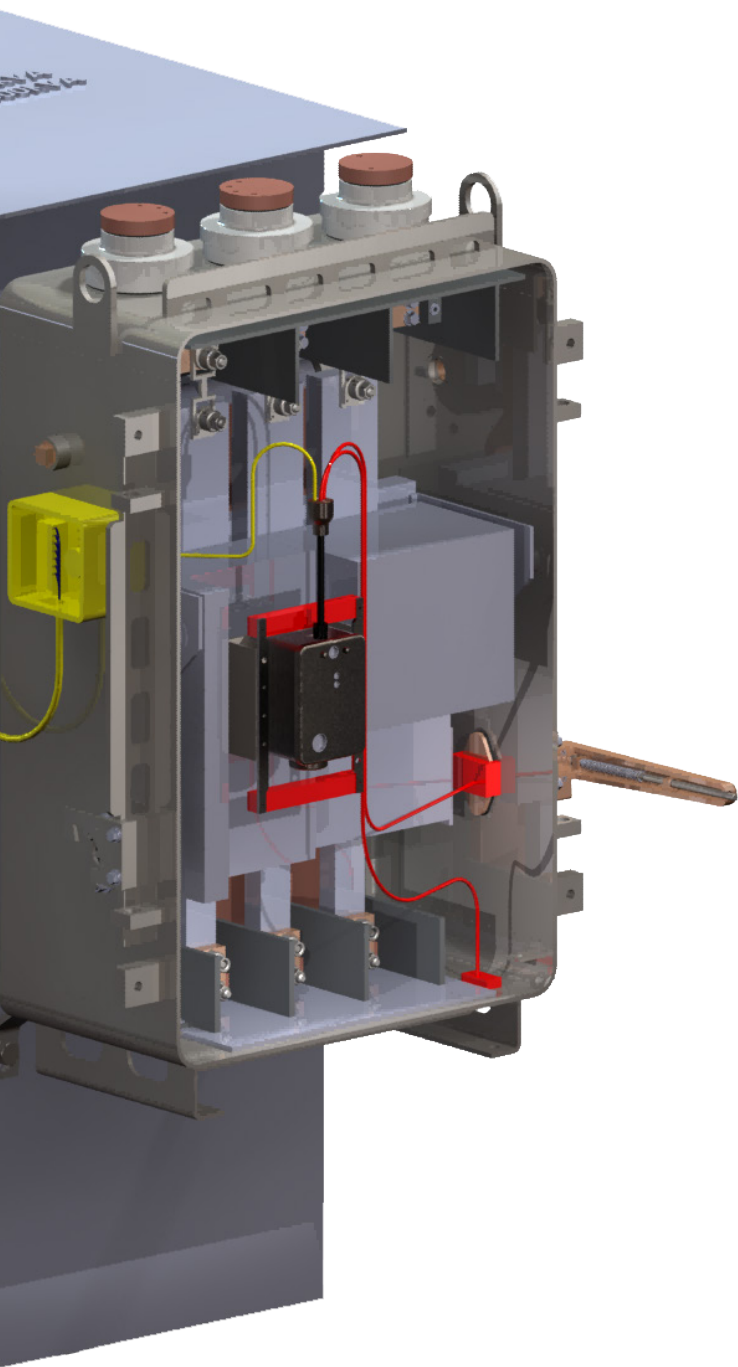
- RS-485
- RS-232

#### Local

#### Communications

- PDA/Laptop via Bluetooth or cable

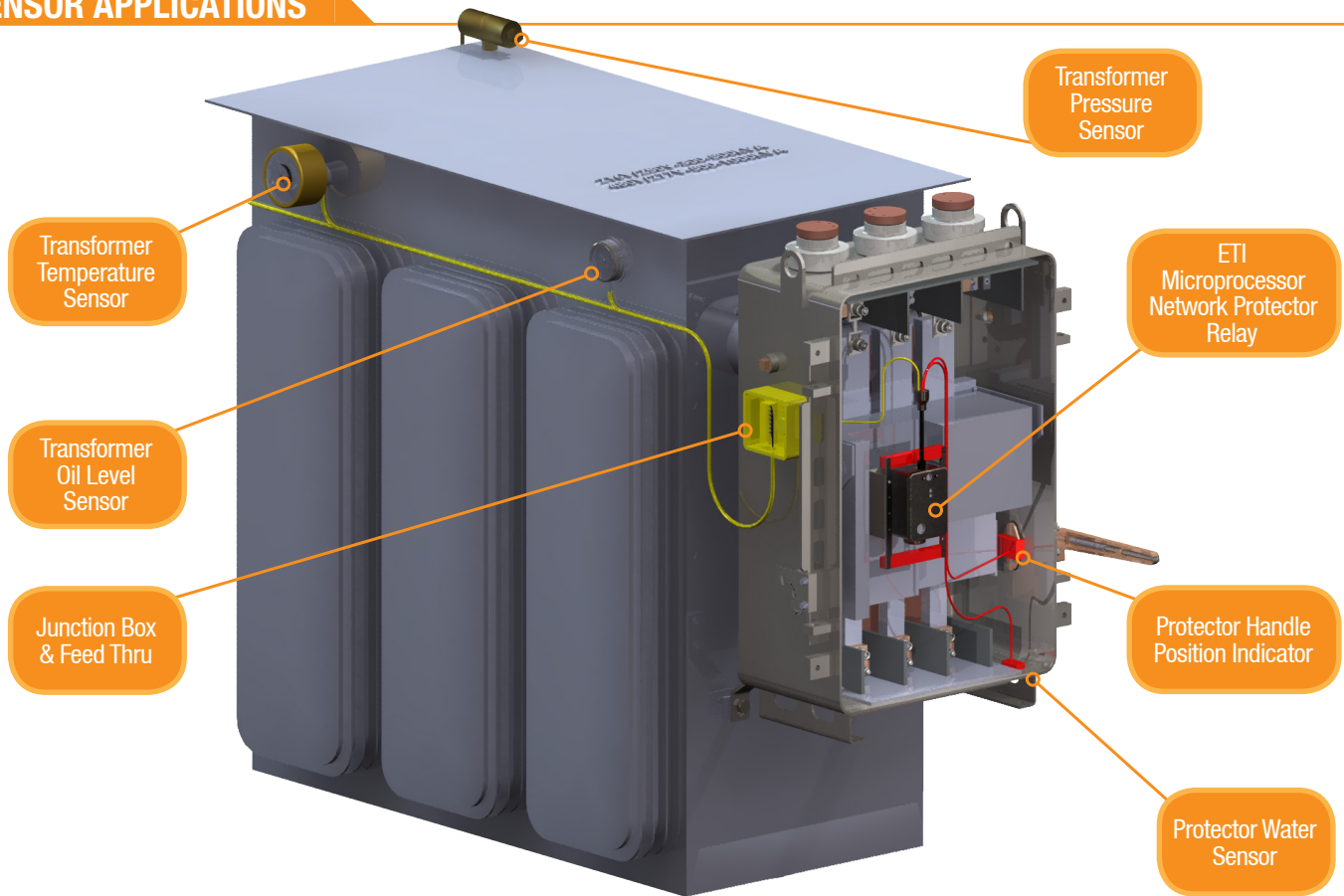




## SCADA Server

- Automate Network Protectors
  - Remote Open and Close
- Monitor System Conditions
  - 3Φ Voltage & Current
  - NP Status (Open/Closed)
  - Transformer Pressure/Temperature/Oil level — identify potential failures before they happen
- The ETI system is easy to install and compatible with all SCADA Systems

## SENSOR APPLICATIONS



## TRANSFORMER SENSORS



### Transformer Pressure Sensor

Monitor transformer pressure to detect leaks or pressure buildup from internal faults

- Range -2 to 20 psi
- Submersible to 30 ft.
- Remote indication 0 to +5Vdc
- $\pm 2\%$  accuracy



### Transformer Temperature Sensor

Monitor transformer temperature to detect overheating

- Available with a short or long stem
- Provides both visual and remote electronic indication
- Remote indication 0 to +5Vdc or  $\pm 5$ Vdc
- Range 0° to 200° C
- Can be installed while the transformer is in service
- Submersible to 30 ft.



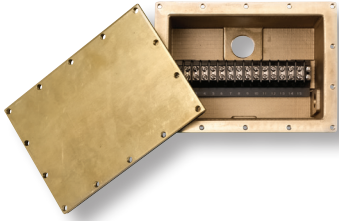
### Transformer Oil Level Sensor

Monitor transformer oil level to catch leaks before it's too late

- Available in many different styles ... both top and side mount
- Electronically indicates angle
- Remote indication 0 to +5Vdc
- Submersible to 30 ft.



## NETWORK PROTECTOR SENSORS



### Junction Box

Provides a convenient submersible point for terminating all wires

- Features gasketed all-brass construction
- NP housing
- Standard housing
- 1" NPT fitting



### Submersible Feed Thru

- Hermetically sealed
- Military grade



### Vault Water Level Sensor

- Provides a signal when water reaches a critical level in the vault



### Optical Water Sensor

- Optically detects the presence of liquid
- Mounts inside network protector, adjustable height
- No moving parts
- Multiple mounting kits available



### Protector Handle Position Indicator

- Available for both 137 NP (GE Style) or 313 NP (WH Style) protectors
- Indicates when the handle is in the open position



### Protector Housing Pressure Sensor

- Monitors network protector housing pressure
- Available as a pressure switch or an analog pressure transducer



### Protector Temperature Sensor — Internal NP Temperature

- Monitors network protector ambient temperature

## ETI MNPR COMMUNICATING RELAY

### ETI MNPR®

- ETI MNPR® is the backbone of the system
- DNP3 Protocol in the MNPR®
  - No protocol translator needed
  - Open architecture ... not proprietary
  - Other protocols available upon request
- Monitor currents and voltages
  - Provide vital data for system planning
  - Powerful tool for riding out contingencies

### Communicating Relays Also Have:

- Up to 8 Analog Inputs — typically used to monitor bus temperatures, pressure, and water level
- Up to 4 Digital Inputs — typically used to monitor NP Status (O/C) and other contact type sensors
- Up to 3 Digital Outputs — typically used to control and external device, such as a sump pump
- $\pm 5$  Volts DC — typically used to power sensors
- Isolated RS485 serial communication port

*Note: Communicating relays are also available with RS232 instead of RS485. Not all I/O combinations available concurrently. Please contact the factory for more information.*



## LOCAL RELAY COMMUNICATIONS

### Commander Software for Android™ Devices

Communicates to the MNPR®

- Program settings and monitor the MNPR®
- Troubleshoot network protector and relay operation
- Connect via Bluetooth head
- Available for free download on Google Play



Google Play and the Google Play logo are trademarks of Google Inc. Android is a trademark of Google Inc.

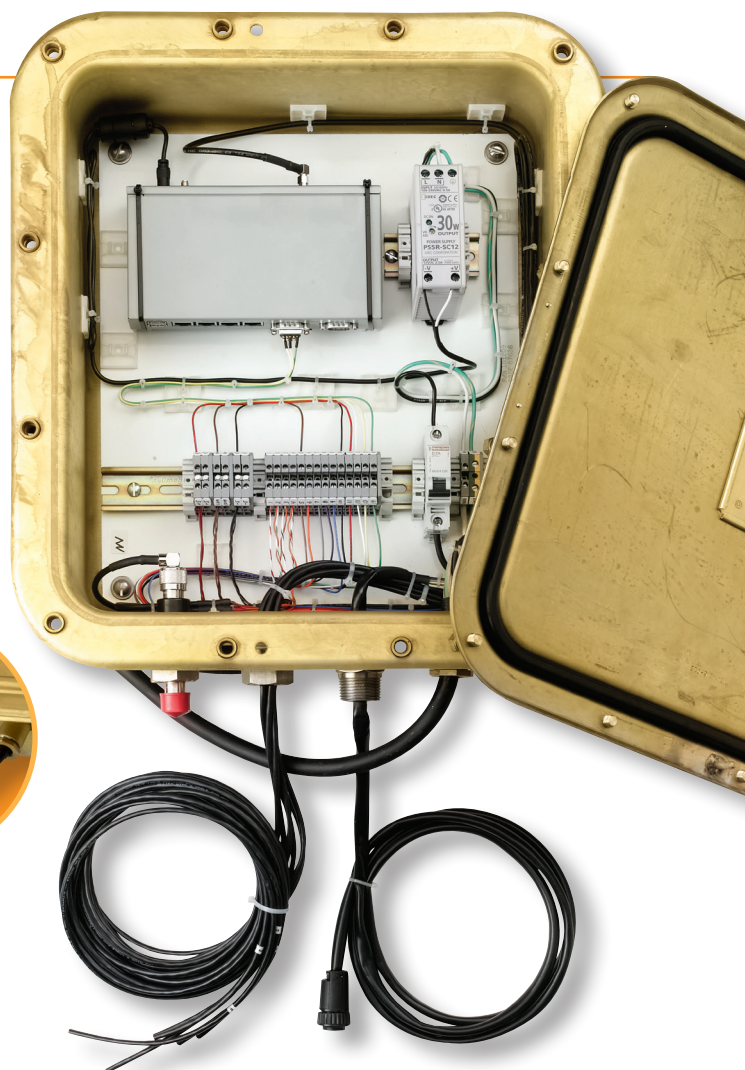


## COMMUNICATION ENCLOSURE

### ETI WAN Enclosure

Electronic Technology Incorporated provides a wide array of custom communications enclosures and electronics for bridging the gap between a wide area network and the electric distribution infrastructure, including network protectors, network transformers and the ETI MNPR®. The enclosure itself is a fully submersible brass box with penetrations for various cable diameters. Many different wide area networks have been used with these enclosures including fiber optics, cellular modems, and licensed and unlicensed radios. Various sensors can also make use of the enclosure as a junction box for bringing signals back to the ETI MNPR®.

- Continuously submersible to 30 ft.
- Packing glands or threaded hubs for penetrating the enclosure
- Made of 1/8" thick brass
- Proven track record
- Continuous gasket inside box
- Multi-bolt cover design

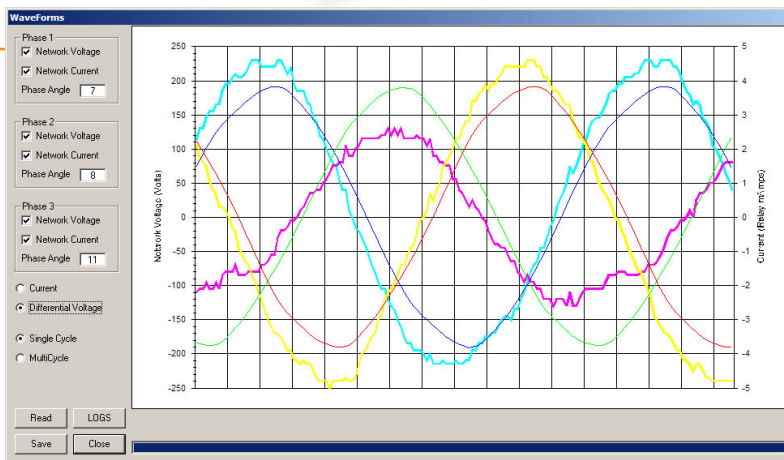


## LOCAL RELAY COMMUNICATIONS

### Laptop with FieldPRO Software

Communicates with the MNPR®

- Program relay settings
- Troubleshoot the network protector
- Connects via a cable from a computer to the MNPR®



**Currents and Voltages**

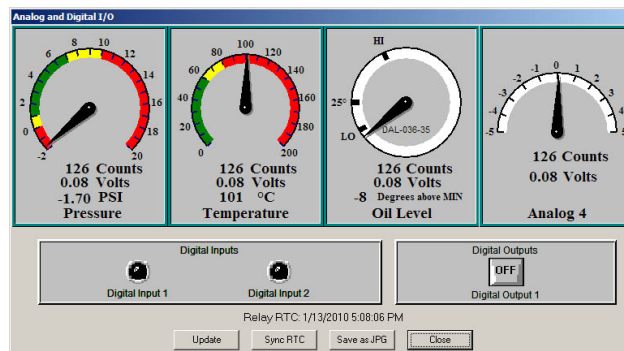
S/N: 3393      Date Read: 01/13/10      Counter: 56

Temperature: 30 °C      Relay Code Date: 08/12/09

	Phase 1	Phase 2	Phase 3
Current (mAmps)	3.1	1.5	3.0
V (line) (Volts)	125.9	124.4	125.3
V (diff) (Volts)	-17.8	-17.8	-17.7
Phase (Degrees)	7	10	10

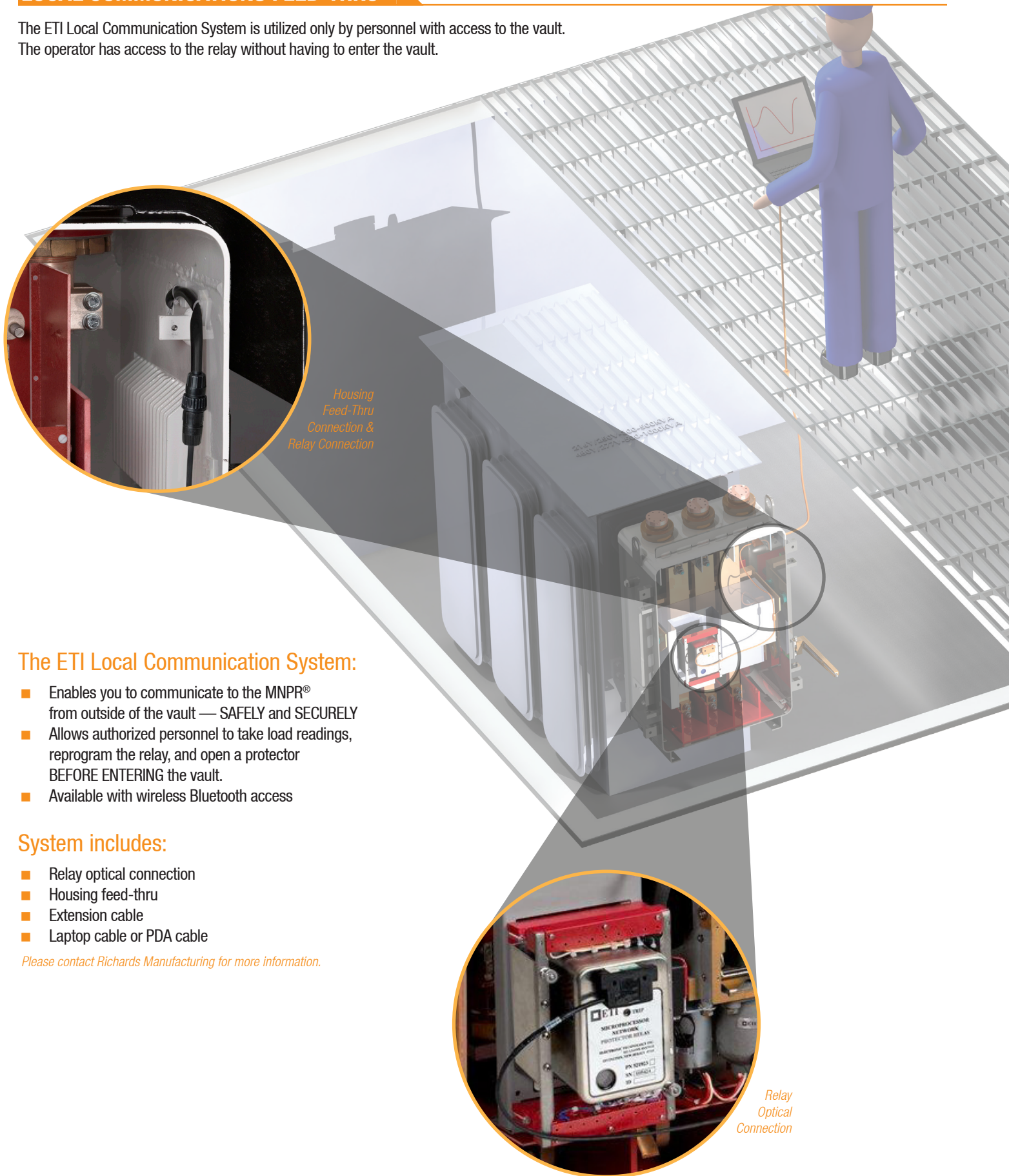
Buttons: Close, Update, Save Data, Retrieve Data, I/O, FFT

ETI MNPR Field Programmer v9.01			
File	Port	Aux I/O	DNP Help
UNBLOCKED FLOAT			
Model: WH	Serial Number: 143001	Revision Number: 9.00	Rev Date: 08/12/09
Reclose Volts: 1.4	Reclose Angle: -5		
<input type="checkbox"/> Circle Close	Cross Phase: OFF		
CT Ratio: 1600	CT: 5		
Trip Mode: <input checked="" type="radio"/> Sensitive	<input type="radio"/> Time Delay	<input type="radio"/> Insensitive	<input type="radio"/> Watt Var
Sensitive (mA): 7.5			
Reset	Load Settings	Read Settings	Status
Block	Unblock	Trip	Waves
Save Settings	Retrieve	Comments	View Data
Exit			
Copyright © 1996-2010 Electronic Technology Incorporated			



## LOCAL COMMUNICATIONS FEED-THRU

The ETI Local Communication System is utilized only by personnel with access to the vault. The operator has access to the relay without having to enter the vault.



### The ETI Local Communication System:

- Enables you to communicate to the MNPR® from outside of the vault — SAFELY and SECURELY
- Allows authorized personnel to take load readings, reprogram the relay, and open a protector BEFORE ENTERING the vault.
- Available with wireless Bluetooth access

### System includes:

- Relay optical connection
- Housing feed-thru
- Extension cable
- Laptop cable or PDA cable

*Please contact Richards Manufacturing for more information.*





