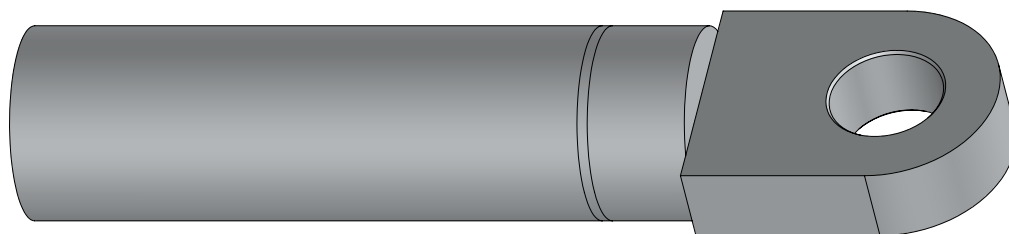


900A Copper Compression Lug

Product Data Sheet

Richards P9CU Series Copper Compression Lugs are current carrying components installed on power cable conductors and can be used to assemble Deadbreak Elbows, Disconnectable Joints, and related products. The P9CU Series Lugs are rated for use on Copper conductors only.

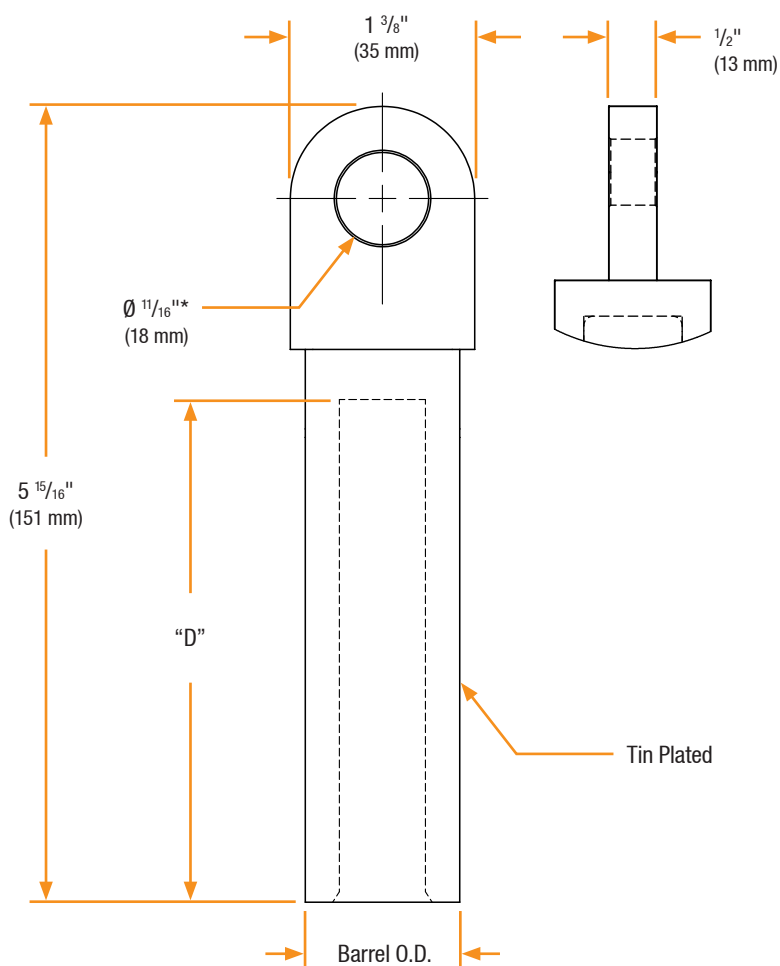
They have been qualified per IEEE 386 to 900A rating. The lugs are tin-plated and supplied with an 11/16" unthreaded hole by default. They are also available with a 15/16"-9 threaded hole (to order as such, add "-15/16" to the part number).



Range

Cable Size		Size "X"	Barrel O.D. (in.)	"D" (in.)
Stranded Compressed	Compact			
#4	#3	05	0.34"	3.66"
#2	#1	07	0.63"	
#1	1/0	08		
1/0	2/0	09		
2/0	3/0	10		
3/0	4/0	11	0.70"	
4/0	250	12	0.75"	
250	300	13	0.81"	
300	350	14	0.86"	
350	400	15	0.91"	
450	500/550	17	1.04"	
500	600	18	1.10"	
600	700	20	1.19"	
650	750/800	21	1.31"	
700	750	22	1.35"	
750	—	23		
900	1000	26	1.55"	
1000	—	28		
1250	—	29	1.71"	
1500	—	30	1.85"	
1750	—	31	1.98"	

Basic Dimensions



* For 15/16"-9 threaded hole add "-15/16"