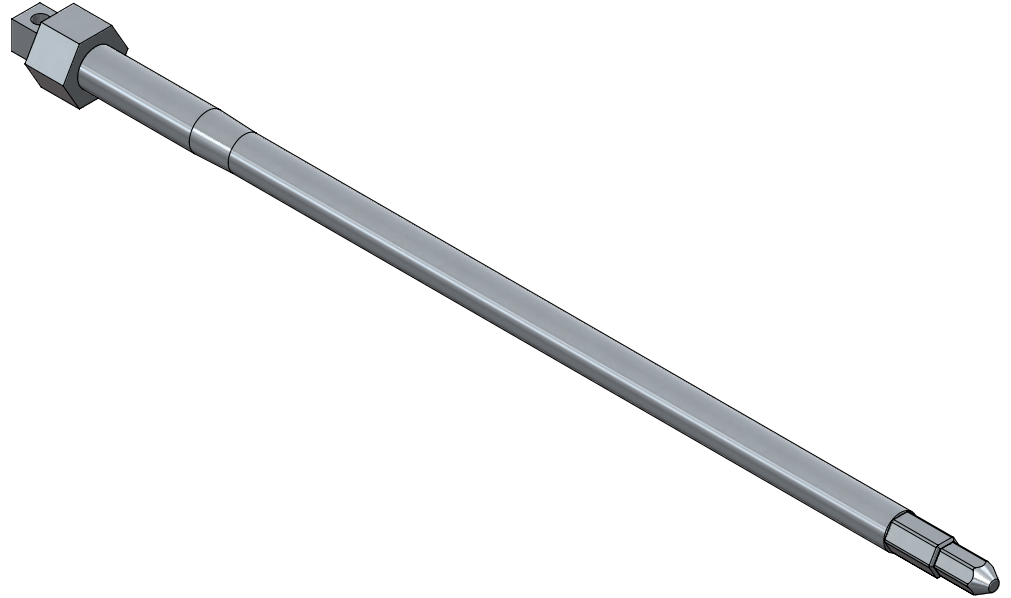


Multi-Hex Installation Tool

Product Data Sheet

The P6AT is an installation tool for use on Medium Voltage Cable Accessories 15kV through 35kV. Equipped with a dual $\frac{5}{16}$ " and $\frac{3}{8}$ " hex tip, the P6AT can be used to install a wide variety of accessories. The back of the P6AT features both a $\frac{3}{8}$ " square drive and a $\frac{3}{4}$ " hex for compatibility with multiple torque-driving tools.

The Multi-Hex Installation Tool is made of Stainless Steel for superior corrosion resistance and is heat treated for additional hardness and durability. Common applications for this tool include installation of R-800, R-Stack, Loadbreak Bushing Inserts, Deadbreak Connecting Plugs.



Features

- Dual hex-tip - $\frac{5}{16}$ " and $\frac{3}{8}$ "
- Dual drive - $\frac{3}{4}$ " hex and $\frac{3}{8}$ " square drive
- Corrosion-Resistant heat-treated stainless steel

Basic Dimensions

