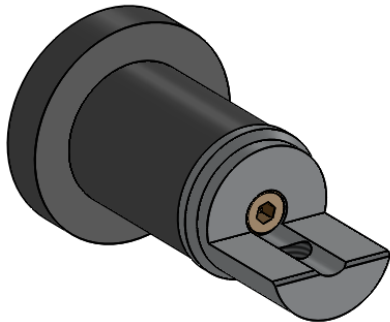
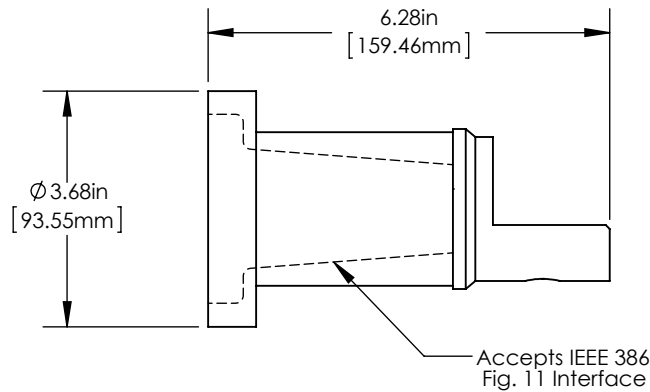


Product Specifications

15/25/28kV Copper Straight Receptacle Adapter Kit



Richards 15/25/28kV Copper Straight Receptacle Adapter Kit converts a 900A interface (IEEE 386 Fig 11) to a disconnectable splice interface for connection to a joint sleeve (P625JS).

The SRA Kit contains a rubber sleeve, brass bolt, and copper contact adapter. It is also available with sleeve components for cable attachment.

Product Ratings

Operating Voltage	16.2kV L-G 28kV L-L
Impulse Withstand	140kV BIL
AC Withstand	45kV
DC Withstand	84kV
Partial Discharge	22kV CEV
Momentary	25kA, 10 cycles
Continuous Current	900A

Richards 15/25/28kV Copper Straight Receptacle Adapter Kit was designed and validated against the following industry standards:

- ANSI/IEEE Std. 386: For Separable Insulated Connector Systems