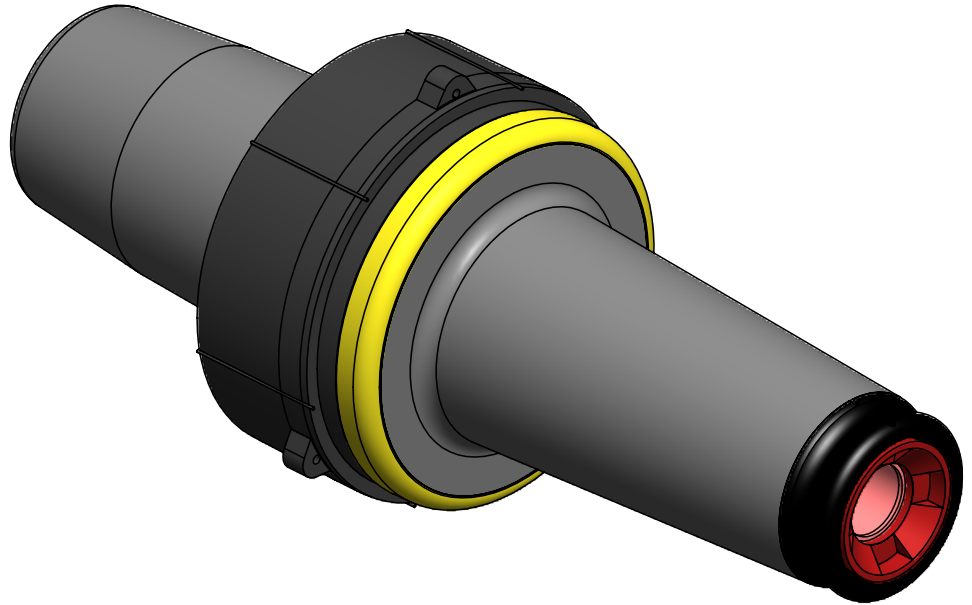


# 15kV Loadbreak Bushing Insert

Product Data Sheet

Richards 15kV 200A Loadbreak Bushing Insert (21LBI) converts a 200A bushing well interface (IEEE 386 Interface 3) to a 200A loadbreak interface (IEEE 386 Interface 5) for use with loadbreak elbows, grounding elbows, insulating caps, surge arresters or other compatible accessories.

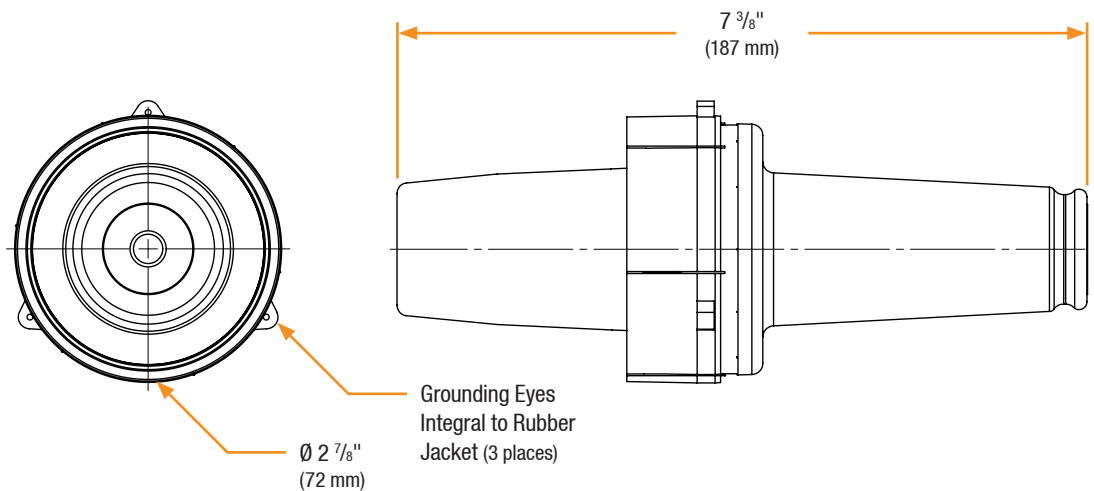
The insert includes an internal 5/16" hex broach for assembly according to provided instructions.



## Features

- Molded-in seating indicator to confirm proper seating of mating component
- Injection Molded with EPDM Rubber
- Semi-conductive cuff with grounding eye for bleeder wire attachment
- Fully Shielded/Deadfront
- Designed, Molded, and Tested in the USA

## Basic Dimensions



# 15kV Loadbreak Bushing Insert

## Installation

15kV Loadbreak Bushing Insert Installation is covered by:  
**RP-II-21LBI**

## Related Products

### P2ALCU-X

200A Copper-Top Lug

### P2CU-X

200A Copper Lug

### 21LGN

15kV Loadbreak Grounding Elbow

### 21LBN/21LBT

15kV Loadbreak Elbow

### 2100EP

15kV Loadbreak Elbow Probe

### 21LBICG

15kV Loadbreak Insulating Cap

## Production Testing

IEEE requires a Partial Discharge test and choice between AC withstand and Impulse.

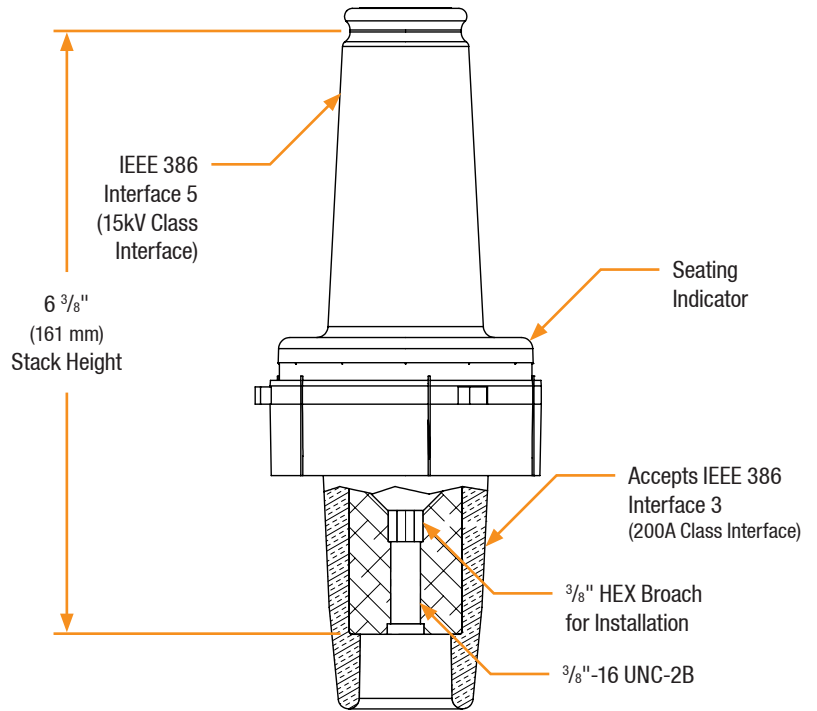
Richards runs 3/3 tests on **all** Medium Voltage products governed by IEEE 386. <sup>®</sup>

### 100% Routine Electrical Test:

- Partial Discharge
- AC Withstand
- Impulse Withstand

<sup>®</sup> Exceeds IEEE 386 requirement

## Detail View



## Product Ratings

Voltage Ratings	
Maximum Voltage Rating – (phase to ground)	8.3/14.4 kV
Corona Voltage Level – (partial discharge extinction voltage)	11kV
AC Withstand – (1 minute)	34kV
Impulse-Withstand Voltage – (BIL)	95kV BIL

Continuous Current Ratings	
Aluminum	200A
Copper	

Short-Time Current Ratings	
Aluminum	10 kA, 10c. and 3.5 kA, 3s.
Copper	

The 15kV Loadbreak Bushing Insert qualified to the following industry standards:

- IEEE Std 386: For Separable Insulated Connector Systems
- IEEE Std 592: For Exposed Semiconducting Shields