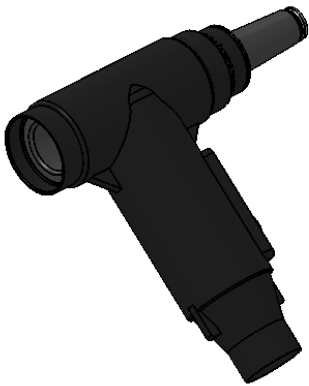
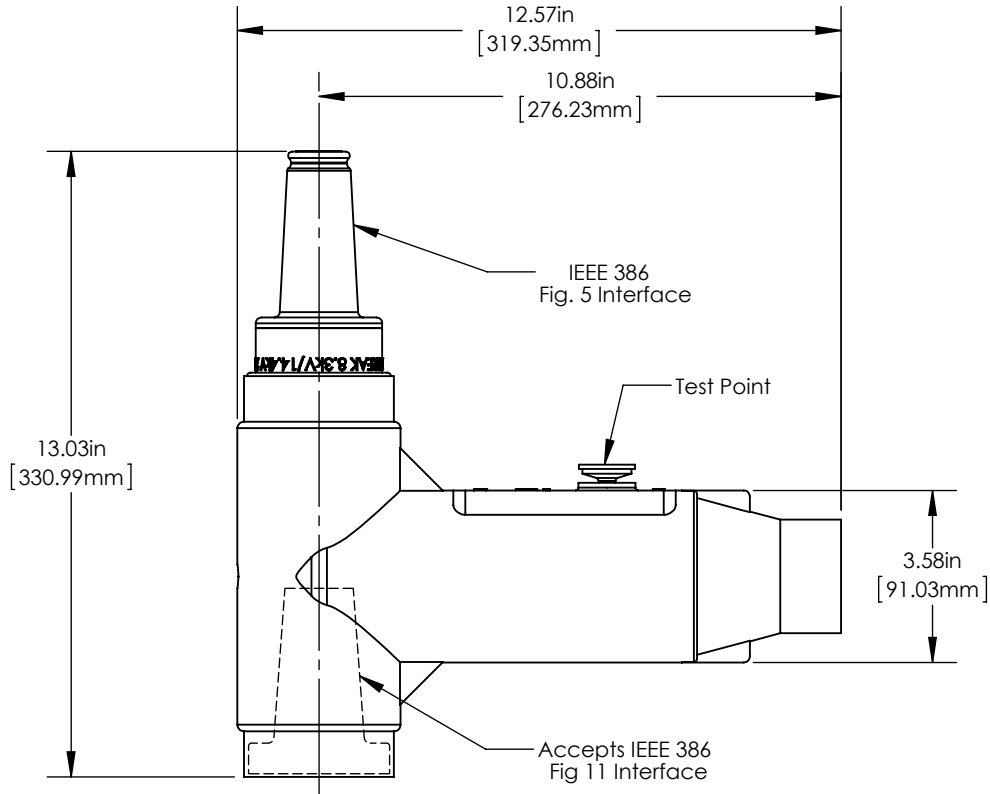


Product Specifications

15kV R-800 Female



Richards 15kV R-800 (618FT) is a 600A elbow with a 15kV 200A loadbreak tap molded into the body. This combination design reduces the number of components, time, and effort required for installation.

The R-800 female version is fully shielded and features a female fastener & stud for assembly to the bushing.

Product Ratings

Operating Voltage	8.3kV 14.4kV
Impulse Withstand	95kV BIL
AC Withstand	34kV
DC Withstand	53kV
Partial Discharge	11kV CEV

Richards 618FT0 was designed and validated against the following industry standards:

- ANSI/IEEE Std. 386: For Separable Insulated Connector Systems
- ANSI C119.4: For Electric Connectors
- IEEE Std. 592: For Exposed Semiconducting Shields