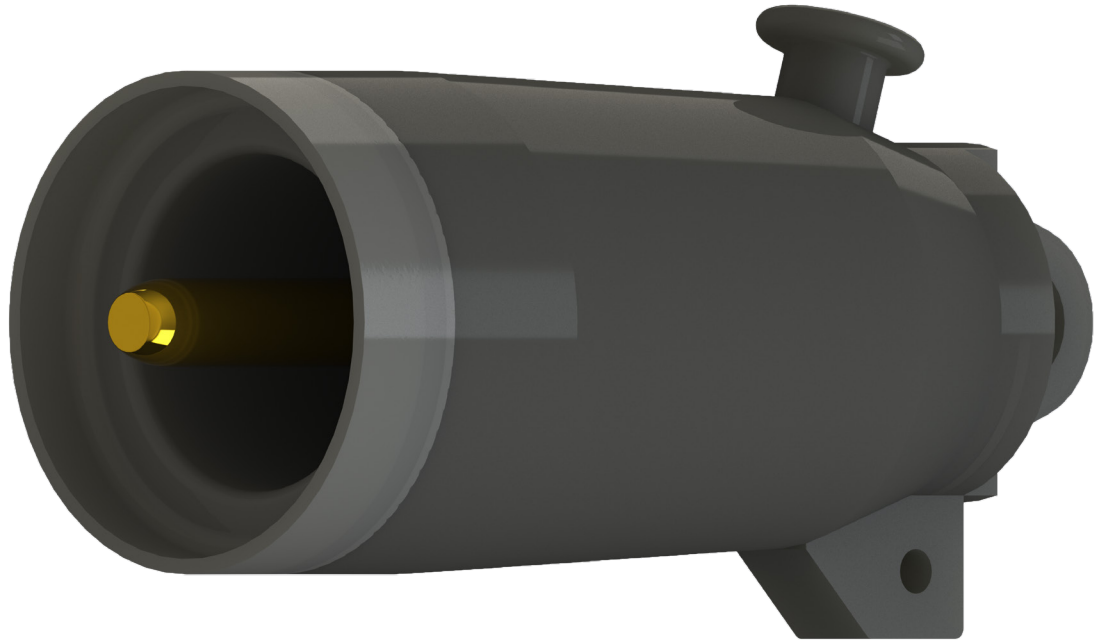


25kV Loadbreak Insulating Cap

Product Data Sheet

The Richards 25kV 200A Loadbreak Insulating Cap provides a means for insulating, shielding and sealing a 25kV 200A Loadbreak Interface (IEEE 386, Interface 7A).

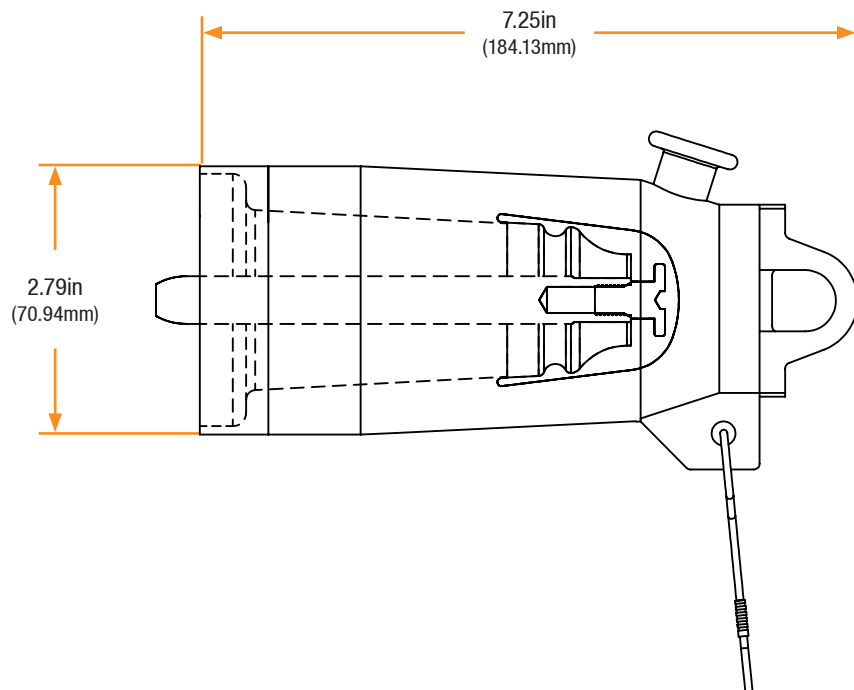
The Cap is supplied with a 48" #12 AWG tinned copper drain wire connected to a grounding eye on the semi-conductive jacket. The Loadbreak Cap features a stainless steel bail that is engaged with suitable hot stick tools to install and remove the cap from its mating accessories.



Features

- Injection Molded EPDM Composition
- Made in the USA
- Stainless Steel Pulling Eye or Bail
- #12 Tinned Copper Drain Wire

Basic Dimensions



25kV Loadbreak Insulating Cap

Installation

25kV Loadbreak Cap installation is covered by: **RP-II-LBIC**

Related Products

628BEF

25kV Bushing Extender R-800

P625ETP

25kV Elbow Tap Plug

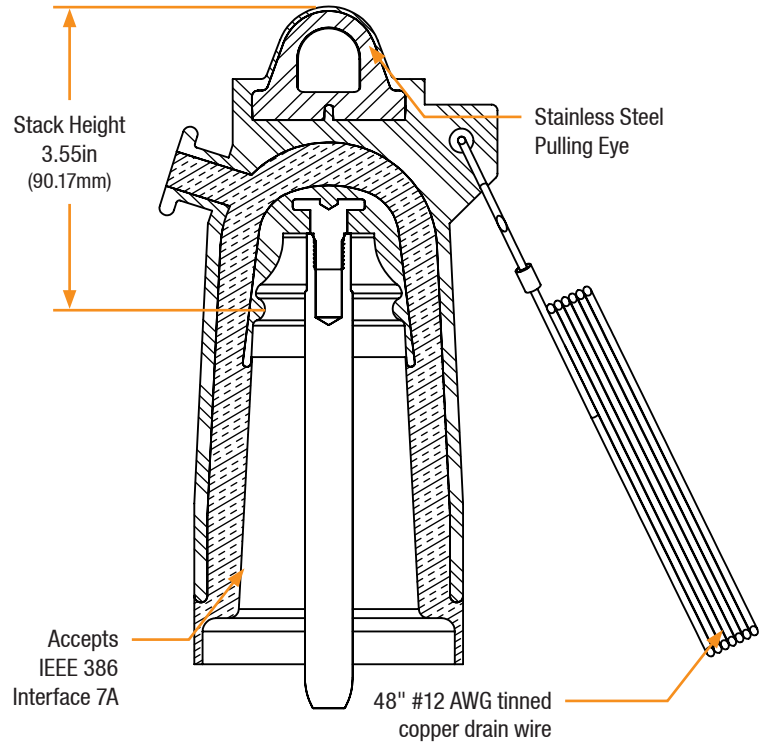
R-800 SERIES

25kV R800 - All Types

CS8 SERIES

25kV Cold Shrink R800 - All Types

Detail View



Production Testing

IEEE requires a Partial Discharge test and choice between AC withstand and Impulse. Richards runs 3/3 tests on **all** Medium Voltage products governed by IEEE 386.[®]

100% Routine Electrical Test:

- Partial Discharge
- AC Withstand
- Impulse Withstand

Product Ratings

Voltage Ratings	
Maximum Voltage Rating – (phase to ground)	15.2kV
Corona Voltage Level – (partial discharge extinction voltage)	19kV
AC Withstand – (1 minute)	40kV
Impulse-Withstand Voltage – (BIL)	125kV BIL

Continuous Current Ratings	
Aluminum	200A
Copper	10kA, 10c. and 3.5kA, 3s.

The 25kV Loadbreak Cap is qualified to the following industry standards:

- IEEE Std 386: For Separable Insulated Connector Systems
- ANSI C119.4: For Electric Connectors
- IEEE Std 592: For Exposed Semiconducting Shields

[®] Exceeds IEEE 386 requirement