


Copper Compression Connectors

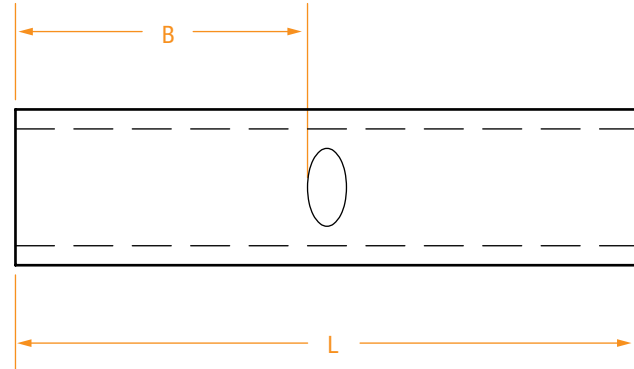


COPPER COMPRESSION CONNECTORS	SERIES	PAGE
Short Copper Splices	SCC Series	51
Copper Splices	CC Series	52
Tapered Copper Splices	TCC Series	53
Straight Oil-Stop Copper Splices	OCC Series	54
Tapered Oil-Stop Copper Splices	OTCC Series	55
Copper Compression Tees	CCT Series	56
Tapered Copper Compression Tees	TCCT Series	57
Copper Compression Reducers	CCR Series	58
Tapered Copper Compression Reducers	TCCR Series	59
Oil-Stop Copper Compression Reducers	OCCR Series	60
Oil-Stop Tapered Copper Compression Reducers	OTCCR Series	61
Corrugated Copper Reducing Adapters	CRA Series	62

SHORT COPPER SPLICES

SCC Series

- Made of pure seamless copper tubing.
- Tin-plated to resist corrosion.
- Indentation in the center of the connector provides a cable stop to ensure proper installation.
-  UL listed.




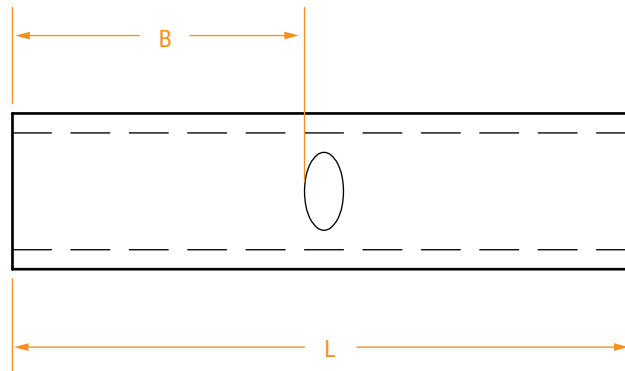
PART NUMBER	WIRE SIZE	INSTALLING DIES	DIMENSIONS IN INCHES	
			B	L
SCC3	6	J, 7, TE, 24, 5/16, 161	13/16	1-3/4
SCC4	5	J, 7, TE, 24	13/16	1-3/4
SCC5	4	5/16, 8, TP, 29	13/16	1-3/4
SCC7	2	3/8, 10, TL-TN, 33, M, 162	7/8	1-7/8
SCC8	1	3/8, 11, TB, 37, M, 162	7/8	1-7/8
SCC9	1/0	1/2, 12, TQ, 42	7/8	1-7/8
SCC10	2/0	9/16, 13, TS, 45	15/16	2
SCC11	3/0	5/8, 14, TU, 50	1	2-1/8
SCC12	4/0	5/8-1, 15, TW-TY, 54	1	2-1/8
SCC13	250	11/16, 16, TR, 60	1-1/16	2-1/4
SCC14	300	781, 17, TV, 66	1-1/16	2-1/4
SCC15	350	840, 18, TX, 71	1-1/8	2-3/8
SCC16	400	15/16, 19, TX, 76	1-3/16	2-1/2
SCC18	500	1, 20, TH, 87H	1-3/8	2-7/8
SCC20	600	1-1/8, 22, 96, 94H	1-3/8	2-7/8
SCC23	750	1-5/16, 24, 106	1-5/8	3-3/8
SCC28	1000	1-1/2, 27, 125	1-7/8	3-7/8
SCC29	1250	29	2	4-1/8
SCC30	1500	1-3/4, 31, 150	2	4-1/8
SCC32	2000	2.00, 34, 175	2-1/4	4-5/8
SCC33	2500	Y60 Press, L486 RT Die	2-7/16	5

FOR OTHER SIZES, CONTACT YOUR SALES REPRESENTATIVE OR THE FACTORY.

COPPER SPLICES

CC Series

- Made of pure seamless copper tubing.
- Tin-plated to resist corrosion.
- Indentation in the center of the connector provides a cable stop to ensure proper installation.
-  UL listed.




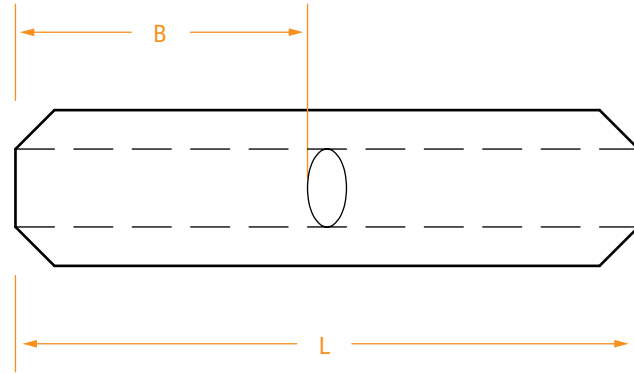
PART NUMBER	WIRE SIZE	INSTALLING DIES	DIMENSIONS IN INCHES	
			B	L
CC3	6	J, 7, TE, 24	1-1/8	2-3/8
CC4	5	J, 7, TE, 24	1-1/8	2-3/8
CC5	4	5/16, 8, TP, 29	1-1/8	2-3/8
CC7	2	3/8, 10, TL-TN, 33	1-1/4	2-5/8
CC8	1	3/8, 11, TB, 37	1-3/8	2-7/8
CC9	1/0	1/2, 12, TQ, 42	1-3/8	2-7/8
CC10	2/0	9/16, 13, TS, 45	1-1/2	3-1/8
CC11	3/0	5/8, 14, TU, 50	1-1/2	3-1/8
CC12	4/0	5/8-1, 15, TW-TY, 54	1-5/8	3-3/8
CC13	250	11/16, 16, TR, 60	1-5/8	3-3/8
CC14	300	781, 17, TV, 66	2	4-1/8
CC15	350	840, 18, TX, 71	2	4-1/8
CC16	400	15/16, 19, TX, 76	2-1/8	4-3/8
CC18	500	1, 20, TH, 87H	2-1/4	4-5/8
CC20	600	1-1/8, 22, 96, 94H	2-11/16	5-1/2
CC23	750	1-5/16, 24, 106	2-7/8	5-7/8
CC28	1000	1-1/2, 27, 125	3	6-1/8
CC29	1250	29	3-3/16	6-1/2
CC30	1500	1-3/4, 31, 150	3-3/16	6-1/2
CC32	2000	2.00, 34, 175	3-7/16	7
CC33	2500	1/60 Press, L486RT	3-15/16	8

FOR OTHER SIZES, CONTACT YOUR SALES REPRESENTATIVE OR THE FACTORY.

TAPERED COPPER SPLICES

TCC Series

- Made of pure seamless copper tubing.
- Tin-plated to resist corrosion.
- Tapered ends for high-voltage use.
- Indentation in the center of the connector provides a cable stop to ensure proper installation.
- 12° taper.
-  UL listed.




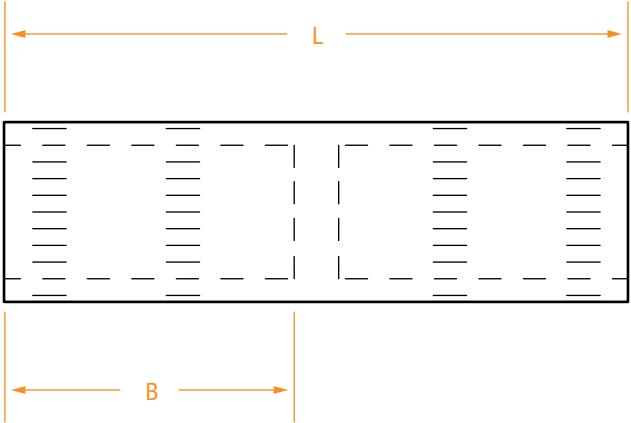
PART NUMBER	WIRE SIZE	INSTALLING DIES	DIMENSIONS IN INCHES	
			B	L
TCC3	6	J, 7, TE, 24	7/8	1-29/32
TCC5	4	5/16, 8, TP, 29	7/8	1-29/32
TCC7	2	3/8, 10, TL-TN, 33	31/32	2-1/16
TCC8	1	3/8, 11, TB, 37	31/32	2-1/16
TCC9	1/0	1/2, 12, TQ, 42	31/32	2-1/16
TCC10	2/0	9/16, 13, TS, 45	1-1/32	2-7/32
TCC11	3/0	5/8, 14, TU, 50	1-1/8	2-13/32
TCC12	4/0	5/8-1, 15, TW-TY, 54	1-1/8	2-3/8
TCC13	250	11/16, 16, TR, 60	1-7/32	2-9/16
TCC14	300	781, 17, TV, 66	1-1/4	2-5/8
TCC15	350	840, 18, TX, 71	1-5/16	2-25/32
TCC16	400	15/16, 19, TX, 76	1-7/16	2-31/32
TCC18	500	1, 20, TH, 87H	1-11/16	3-17/32
TCC20	600	1-1/8, 22, 96, 94H	2-1/16	4-7/32
TCC23	750	1-5/16, 24, 106	2-1/16	4-7/32
TCC28	1000	1-1/2, 27, 125	2-7/16	4-31/32
TCC29	1250	29	3-7/32	6-1/2
TCC30	1500	1-3/4, 31, 150	3-7/32	6-1/2
TCC32	2000	2.00, 34, 175	3-15/32	6-11/16
TCC33	2500	Y60 Press, L486RT	3-15/16	8

FOR OTHER SIZES, CONTACT YOUR SALES REPRESENTATIVE OR THE FACTORY.

STRAIGHT OIL-STOP
COPPER SPLICES

OCC Series

- Made of pure seamless copper tubing.
- Tin-plated to resist corrosion.
- Solid copper barriers are brazed in the center to insure an oil-tight seal.
- Long enough for double crimping to add mechanical strength.
-  UL listed.




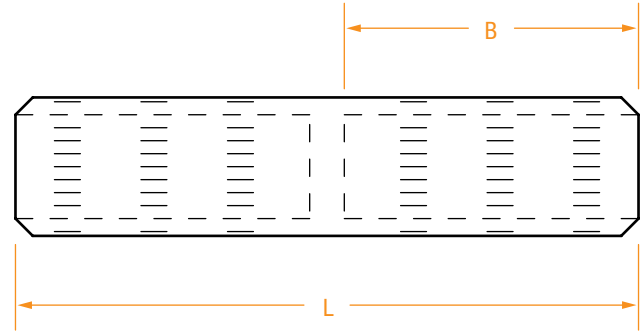
PART NUMBER	WIRE SIZE	INSTALLING DIES	DIMENSIONS IN INCHES	
			B	L
OCC3	6	7, TE, 24	1-1/8	2-3/8
OCC5	4	5/16, 8, TP, 29, 161	1-1/8	2-3/8
OCC7	2	3/8, 10, TL-TN, 162	1-1/4	2-5/8
OCC8	1	3/8, 11, TB, 37, 276	1-3/8	2-7/8
OCC9	1/0	1/2, 12, TQ, 42, 163	1-3/8	2-7/8
OCC10	2/0	9/16, 13, TS, 164	1-1/2	3-1/8
OCC11	3/0	5/8, 14, TU, 243	1-1/2	3-1/8
OCC12	4/0	5/8-1, 15, 165	1-5/8	3-3/8
OCC13	250	11/16, 16, TR, 166	1-5/8	3-3/8
OCC14	300	781, 17, TV, 167	2	4-1/8
OCC15	350	840, 18, TX, 168	2	4-1/8
OCC16	400	15/16, 19, TX, 169	2-1/8	4-3/8
OCC18	500	1, 20, 170	2-1/4	4-5/8
OCC20	600	1-1/8-2, 22, 96, 316, 94H	2-11/16	5-1/2
OCC23	750	1-5/16, 24, 106, 317	2-7/8	5-7/8
OCC24	800	1-5/16, 25, 112, 300	2-15/16	6
OCC28	1000	1-1/2, 27, 125	3	6-1/8
OCC29	1250	29	3-1/4	7

FOR OTHER SIZES, CONTACT YOUR SALES REPRESENTATIVE OR THE FACTORY.

TAPERED OIL-STOP COPPER SPLICES

OTCC Series

- Made of pure seamless copper tubing.
- Tin-plated to resist corrosion.
- Tapered ends for high-voltage use.
- Solid copper barriers are brazed in the center to insure an oil-tight seal.
- 12° taper.
-  UL listed.




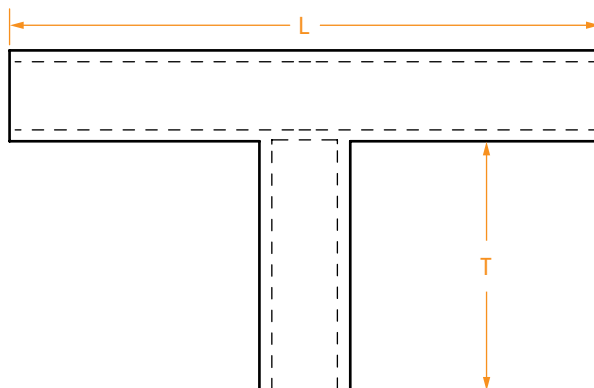
PART NUMBER	WIRE SIZE	INSTALLING DIES	DIMENSIONS IN INCHES	
			B	L
OTCC3	6	J, 7, TE, 24	7/8	1-29/32
OTCC5	4	5/16, 8, TP, 29	7/8	1-29/32
OTCC7	2	3/8, 10, TL-TN, 33	31/32	2-1/16
OTCC8	1	3/8, 11, TB, 37	31/32	2-1/16
OTCC9	1/0	1/2, 12, TQ, 42	31/32	2-1/16
OTCC10	2/0	9/16, 13, TS, 45	1-1/32	2-7/32
OTCC11	3/0	5/8, 14, TU, 50	1-1/8	2-13/32
OTCC12	4/0	5/8-1, 15, TW-TY, 54	1-1/8	2-3/8
OTCC13	250	11/16, 16, TR, 60	1-7/32	2-9/16
OTCC14	300	781, 17, TV, 66	1-1/4	2-5/8
OTCC15	350	840, 18, TX, 71	1-5/16	2-25/32
OTCC16	400	15/16, 19, TX, 76	1-7/16	2-31/32
OTCC18	500	1, 20, TH, 87H	1-11/16	3-17/32
OTCC20	600	1-1/8, 22, 96, 94H	2-1/16	4-7/32
OTCC23	750	1-5/16, 24, 106	2-1/16	4-7/32
OTCC28	1000	1-1/2, 27, 125	2-7/16	4-31/32
OTCC29	1250	29	3-7/32	6-1/2
OTCC30	1500	1-3/4, 31, 150	3-7/32	6-1/2
OTCC32	2000	2.00, 34, 175	3-15/32	6-11/16

FOR OTHER SIZES, CONTACT YOUR SALES REPRESENTATIVE OR THE FACTORY.

COPPER COMPRESSION TEES

CCT Series

- Made of pure seamless copper tubing.
- Tin-plated to resist corrosion.
- Available in different run and tap sizes.
- Marked with conductor size and die information.
-  UL listed.




PART NUMBER	RUN	TAP	DIMENSIONS IN INCHES	
			L	T
CCT9-3	1/0	6	3-3/4	1-1/2
CCT9-5	1/0	4	3-13/16	1-1/2
CCT9-7	1/0	2	3-7/8	1-1/2
CCT9-8	1/0	1	3-15/16	1-1/2
CCT9	1/0	1/0	4	1-1/2
CCT10-3	2/0	6	3-29/32	1-5/8
CCT10-5	2/0	4	3-31/32	1-5/8
CCT10-7	2/0	2	4-1/32	1-5/8
CCT10-8	2/0	1	4-3/32	1-5/8
CCT10-9	2/0	1/0	4-5/32	1-5/8
CCT10	2/0	2/0	4-5/32	1-5/8
CCT12-7	4/0	2	4-3/16	1-3/4
CCT12-8	4/0	1	4-3/16	1-3/4
CCT12-9	4/0	1/0	4-1/4	1-3/4
CCT12-10	4/0	2/0	4-5/16	1-3/4
CCT12	4/0	4/0	4-7/16	1-3/4
CCT13-7	250	2	4-1/4	1-3/4
CCT13-8	250	1	4-1/4	1-3/4
CCT13-9	250	1/0	4-5/16	1-3/4
CCT13-10	250	2/0	4-3/8	1-3/4
CCT13-12	250	4/0	4-1/2	1-3/4
CCT13	250	250	4-9/16	1-3/4
CCT15-9	350	1/0	5-37/64	2-3/16
CCT15-10	350	2/0	5-37/64	2-3/16
CCT15-12	350	4/0	5-23/32	2-3/16
CCT15	350	350	5-29/32	2-3/16

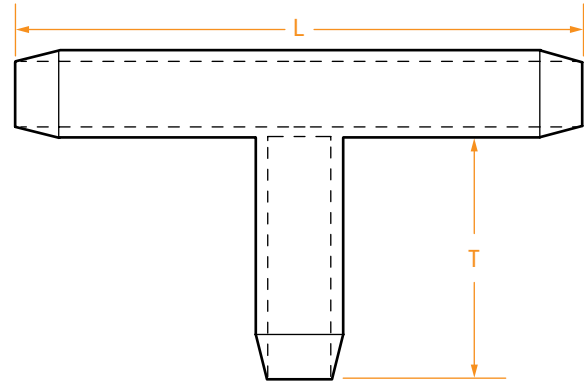
PART NUMBER	RUN	TAP	DIMENSIONS IN INCHES	
			L	T
CCT16-9	400	1/0	5-21/32	2-3/8
CCT16-10	400	2/0	5-21/32	2-3/8
CCT16-12	400	4/0	5-25/32	2-3/8
CCT16-13	400	250	5-27/32	2-3/8
CCT16-14	400	300	5-29/32	2-3/8
CCT16-15	400	350	5-31/32	2-3/8
CCT16	400	400	6-1/32	2-3/8
CCT18-9	500	1/0	6-23/64	2-19/32
CCT18-10	500	2/0	6-23/64	2-19/32
CCT18-12	500	4/0	6-15/32	2-19/32
CCT18-13	500	250	6-17/32	2-19/32
CCT18-15	500	350	6-21/32	2-19/32
CCT18-16	500	400	6-23/32	2-19/32
CCT18	500	500	6-23/32	2-19/32
CCT20-10	600	2/0	7-3/16	3-3/32
CCT20-12	600	4/0	7-7/16	3-3/32
CCT20-13	600	350	7-9/16	3-3/32
CCT20-18	600	500	7-11/16	3-3/32
CCT20	600	600	7-7/8	3-3/32
CCT23-15	750	350	7-7/8	3-3/8
CCT23-18	750	500	7-7/8	3-3/8
CCT23	750	750	7-7/8	3-3/8
CCT28-18	1,000	500	9-1/2	4
CCT28-20	1,000	600	9-1/2	4
CCT28-23	1,000	750	9-1/2	4
CCT28	1,000	1,000	9-1/2	4

FOR OTHER SIZES, CONTACT YOUR SALES REPRESENTATIVE OR THE FACTORY.

TAPERED COPPER COMPRESSION TEES

TCCT Series

- Made of pure seamless copper tubing.
- Tin-plated to resist corrosion.
- Available in different run and tap sizes.
- Marked with conductor size and die information.
-  UL listed.



PART NUMBER	RUN	TAP	DIMENSIONS IN INCHES	
			L	T
TCCT9-3	1/0	6	3-3/4	1-1/2
TCCT9-5	1/0	4	3-13/16	1-1/2
TCCT9-7	1/0	2	3-7/8	1-1/2
TCCT9-8	1/0	1	3-15/16	1-1/2
TCCT9	1/0	1/0	4	1-1/2
TCCT10-3	2/0	6	3-29/32	1-5/8
TCCT10-5	2/0	4	3-31/32	1-5/8
TCCT10-7	2/0	2	4-1/32	1-5/8
TCCT10-8	2/0	1	4-3/32	1-5/8
TCCT10-9	2/0	1/0	4-5/32	1-5/8
TCCT10	2/0	2/0	4-5/32	1-5/8
TCCT12-7	4/0	2	4-3/16	1-3/4
TCCT12-8	4/0	1	4-3/16	1-3/4
TCCT12-9	4/0	1/0	4-1/4	1-3/4
TCCT12-10	4/0	2/0	4-5/16	1-3/4
TCCT12	4/0	4/0	4-7/16	1-3/4
TCCT13-7	250	2	4-1/4	1-3/4
TCCT13-8	250	1	4-1/4	1-3/4
TCCT13-9	250	1/0	4-5/16	1-3/4
TCCT13-10	250	2/0	4-3/8	1-3/4
TCCT13-12	250	4/0	4-1/2	1-3/4
TCCT13	250	250	4-9/16	1-3/4
TCCT15-9	350	1/0	5-37/64	2-3/16
TCCT15-10	350	2/0	5-37/64	2-3/16
TCCT15-12	350	4/0	5-23/32	2-3/16
TCCT15	350	350	5-29/32	2-3/16

PART NUMBER	RUN	TAP	DIMENSIONS IN INCHES	
			L	T
TCCT16-9	400	1/0	5-21/32	2-3/8
TCCT16-10	400	2/0	5-21/32	2-3/8
TCCT16-12	400	4/0	5-25/32	2-3/8
TCCT16-13	400	250	5-27/32	2-3/8
TCCT16-14	400	300	5-29/32	2-3/8
TCCT16-15	400	350	5-31/32	2-3/8
TCCT16	400	400	6-1/32	2-3/8
TCCT18-9	500	1/0	6-23/64	2-19/32
TCCT18-10	500	2/0	6-23/64	2-19/32
TCCT18-12	500	4/0	6-15/32	2-19/32
TCCT18-13	500	250	6-17/32	2-19/32
TCCT18-15	500	350	6-21/32	2-19/32
TCCT18-16	500	400	6-23/32	2-19/32
TCCT18	500	500	6-23/32	2-19/32
TCCT20-10	600	2/0	7-3/16	3-3/32
TCCT20-12	600	4/0	7-7/16	3-3/32
TCCT20-13	600	350	7-9/16	3-3/32
TCCT20-18	600	500	7-11/16	3-3/32
TCCT20	600	600	7-7/8	3-3/32
TCCT23-15	750	350	7-7/8	3-3/8
TCCT23-18	750	500	7-7/8	3-3/8
TCCT23	750	750	7-7/8	3-3/8
TCCT28-18	1,000	500	9-1/2	4
TCCT28-20	1,000	600	9-1/2	4
TCCT28-23	1,000	750	9-1/2	4
TCCT28	1,000	1,000	9-1/2	4

FOR OTHER SIZES, CONTACT YOUR SALES REPRESENTATIVE OR THE FACTORY.

COPPER
COMPRESSION REDUCERS

CCR Series


- Made of pure seamless copper tubing.
- Tin-plated to resist corrosion.
- Below is a list of common conductor sizes and the range of reduction sizes available. When ordering, specify both cable sizes in the part numbers listed below. A Figure 1 or Figure 2 design will be supplied depending on the amount of reduction.
- All connectors are marked with conductor size and die information.
-  UL listed.

Figure 1

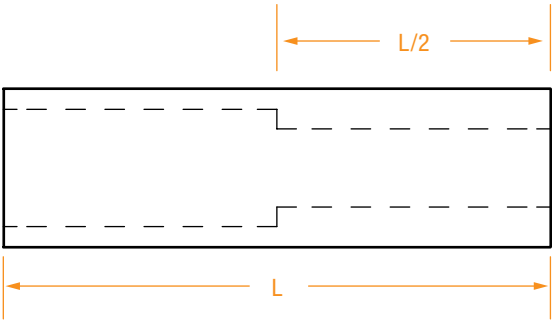
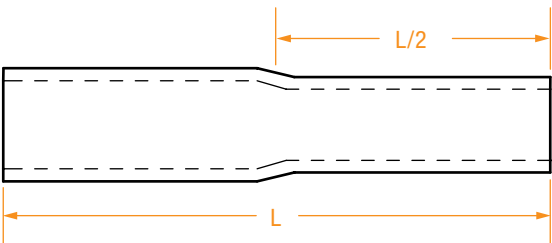


Figure 2




PART NUMBER*	FROM CABLE SIZE	TO CABLE SIZE (RANGE)	DIMENSIONS IN INCHES
			L
CCR3-2	#6	#8	2
CCR5-	#4	#6 - #8	2
CCR7-	#2	#4 - #8	2
CCR8-	#1	#2 - #8	2-1/4
CCR9-	1/0	#1 - #6	2-1/4
CCR10-	2/0	1/0 - #6	2-1/4
CCR11-	3/0	2/0 - #6	3-1/2
CCR12-	4/0	3/0 - #6	3-1/2
CCR13-	250	4/0 - #4	3-3/4
CCR14-	300	250 - #4	3-3/4
CCR15-	350	300 - #4	3-3/4
CCR18-	500	450 - 1/0	4-1/4
CCR23-	750	700 - 1/0	4-3/4
CCR28-	1000	950 - 2/0	6
CCR29-	1250	1000 - 4/0	7

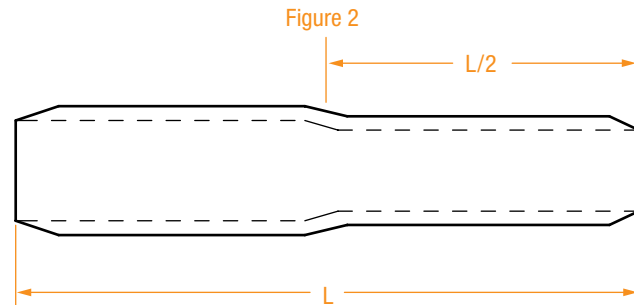
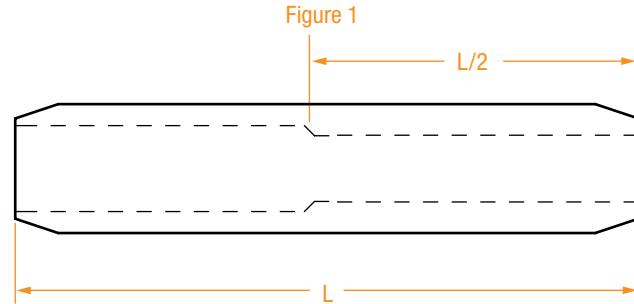
FOR OTHER SIZES, CONTACT YOUR SALES REPRESENTATIVE OR THE FACTORY.

* Add second wire size to the part number when ordering (example: CCR28-23 is a Cu compression reducer for 1000 to 750 copper cables).

TAPERED COPPER COMPRESSION REDUCERS

TCCR Series

- Made of pure seamless copper tubing.
- Tin-plated to resist corrosion.
- Below is a list of common conductor sizes and the range of reduction sizes available. When ordering, specify both cable sizes in the part numbers listed below. A Figure 1 or Figure 2 design will be supplied depending on the amount of reduction.
- All connectors are marked with conductor size and die information.
-  UL listed.



PART NUMBER*	FROM CABLE SIZE	TO CABLE SIZE (RANGE)	INSTALLING DIES	DIMENSIONS IN INCHES
				L
TCCR3-2	#6	#8	7, TE, 24	2
TCCR5-	#4	#6 - #8	5/16, 8, TP, 29, 161	2
TCCR7-	#2	#4 - #8	3/8, 10, TL-TN, 162	2
TCCR8-	#1	#2 - #8	3/8, 11, TB, 37, 276	2-1/4
TCCR9-	1/0	#1 - #6	1/2, 12, TQ, 42, 163	2-1/4
TCCR10-	2/0	1/0 - #6	9/16, 13, TS, 164	2-1/4
TCCR11-	3/0	2/0 - #4	5/8, 14, TU, 243	3-1/2
TCCR12-	4/0	3/0 - #6	5/8-1, 15, 165	3-1/2
TCCR13-	250	4/0 - #4	11/16, 16, TR, 166	3-3/4
TCCR14-	300	250 - #4	781, 17, TV, 167	3-3/4
TCCR15-	350	300 - #4	840, 18, TX, 168	3-3/4
TCCR18-	500	450 - 1/0	1, 20, 170	4-1/4
TCCR23-	750	700 - 1/0	1-5/16, 24, 106, 317	4-3/4
TCCR28-	1000	950 - 2/0	1-1/2, 27, 125	6
TCCR29-	1250	4/0 - 1000	29	8

FOR OTHER SIZES, CONTACT YOUR SALES REPRESENTATIVE OR THE FACTORY.

* Add second wire size to the part number when ordering (example: TCCR15-9 is a tapered Cu compression reducer for 350 to 1/0 copper cables).

OIL-STOP COPPER COMPRESSION REDUCERS

OCCR Series


- Made of high-conductivity copper.
- Tin-plated to resist corrosion.
- Below is a list of common conductor sizes and the range of reduction sizes available. When ordering, specify both cable sizes in the part numbers listed below. A Figure 1 or Figure 2 design will be supplied depending on the amount of reduction.
- All connectors are marked with conductor size and die information.
-  UL listed.

Figure 1

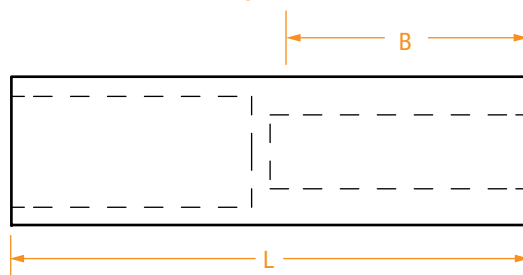
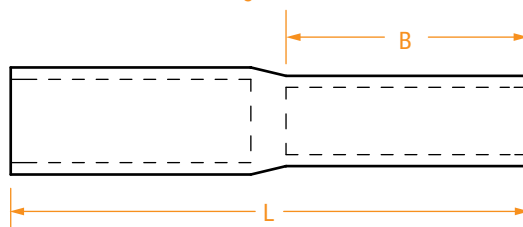


Figure 2




PART NUMBER*	FROM CABLE SIZE	TO CABLE SIZE (RANGE)	INSTALLING DIES	DIMENSIONS IN INCHES	
				L	B
OCCR3-2	#6	#8	7, TE, 24	2	7/8
OCCR5-	#4	#6 - #8	5/16, 8, TP, 29, 161	2	7/8
OCCR7-	#2	#4 - #8	3/8, 10, TL-TN, 162	2	7/8
OCCR8-	#1	#2 - #8	3/8, 11, TB, 37, 276	2-1/4	1
OCCR9-	1/0	#1 - #6	1/2, 12, TQ, 42, 163	2-1/4	1
OCCR10-	2/0	1/0 - #6	9/16, 13, TS, 164	2-1/4	1
OCCR11-	3/0	2/0 - #6	5/8, 14, TU, 243	3-1/2	1-5/8
OCCR12-	4/0	3/0 - #6	5/8-1, 15, 165	3-1/2	1-5/8
OCCR13-	250	4/0 - #4	11/16, 16, TR, 166	3-3/4	1-3/4
OCCR14-	300	250 - #4	781, 17, TV, 167	3-3/4	1-3/4
OCCR15-	350	300 - #4	840, 18, TX, 168	3-3/4	1-11/16
OCCR18-	500	450 - 1/0	1, 20, 170	4-1/4	1-15/16
OCCR23-	750	700 - 1/0	1-5/16, 24, 106, 317	4-3/4	2-1/8
OCCR28-	1000	950 - 2/0	1-1/2, 27, 125	6	2-3/4
OCCR29-	1250	4/0 - 1000	29	8	3-3/4

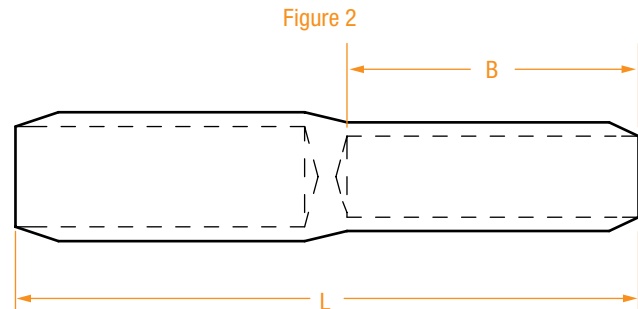
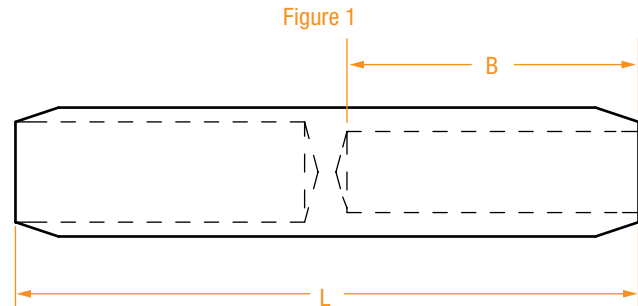
FOR OTHER SIZES, CONTACT YOUR SALES REPRESENTATIVE OR THE FACTORY.

* Add second wire size to the part number when ordering (example: CCR18-12 is an oil-stop Cu compression reducer for 500 to 4/0 copper cables).

OIL-STOP TAPERED COPPER COMPRESSION REDUCERS

OTCCR Series

- Made of high-conductivity copper.
- Tin-plated to resist corrosion.
- Below is a list of common conductor sizes and the range of reduction sizes available. When ordering, specify both cable sizes in the part numbers listed below. A Figure 1 or Figure 2 design will be supplied depending on the amount of reduction.
- All connectors are marked with conductor size and die information.
-  UL listed.



PART NUMBER*	FROM CABLE SIZE	TO CABLE SIZE (RANGE)	INSTALLING DIES	DIMENSIONS IN INCHES	
				L	B
OTCCR3-	#6	#8	7, TE, 24	2	7/8
OTCCR5-	#4	#6 - #8	5/16, 8, TP, 29, 161	2	7/8
OTCCR7-	#2	#4 - #8	3/8, 10, TL-TN, 162	2	7/8
OTCCR8-	#1	#2 - #8	3/8, 11, TB, 37, 276	2-1/4	1
OTCCR9-	1/0	#1 - #6	1/2, 12, TQ, 42, 163	2-1/4	1
OTCCR10-	2/0	1/0 - #6	9/16, 13, TS, 164	2-1/4	1
OTCCR11-	3/0	2/0 - #4	5/8, 14, TU, 243	3-1/2	1-5/8
OTCCR12-	4/0	3/0 - #6	5/8-1, 15, 165	3-1/2	1-5/8
OTCCR13-	250	4/0 - #4	11/16, 16, TR, 166	3-3/4	1-3/4
OTCCR14-	300	250 - #4	781, 17, TV, 167	3-3/4	1-3/4
OTCCR15-	350	300 - #4	840, 18, TX, 168	3-3/4	1-11/16
OTCCR18-	500	450 - 1/0	1, 20, 170	4-1/4	1-15/16
OTCCR23-	750	700 - 1/0	1-5/16, 24, 106, 317	4-3/4	2-1/8
OTCCR28-	1000	950 - 2/0	1-1/2, 27, 125	6	2-3/4
OTCCR29-	1250	1000 - 4/0	29	8	3-3/4

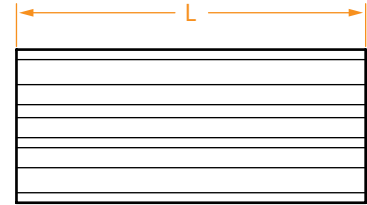
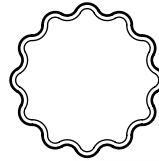
FOR OTHER SIZES, CONTACT YOUR SALES REPRESENTATIVE OR THE FACTORY.

* Add second wire size to the part number when ordering (example: OTCCR18-10 is an oil-stop tapered Cu compression reducer for 500 mcm to 2/0 copper cables).

CORRUGATED COPPER REDUCING ADAPTERS

CRA Series

- Used to reduce the socket size of a standard compression connector – enabling the use of a smaller wire size.
- Fabricated from pure soft copper.
- Hot-tinned to resist corrosion.
- Some sizes are not available with corrugation and have a smooth I.D and O.D.



PART NUMBER	CABLE SIZE		DIMENSIONS IN INCHES
	FROM	TO	L
CRA12-3	4/0	#6	1-3/4
CRA12-5	4/0	#4	1-3/4
CRA12-7	4/0	#2	1-3/4
CRA12-8	4/0	#1	1-3/4
CRA12-9	4/0	1/0	1-3/4
CRA12-10	4/0	2/0	1-3/4
CRA12-11	4/0	3/0	1-3/4
CRA15-3	350	#6	1-3/4
CRA15-5	350	#4	1-3/4
CRA15-7	350	#2	1-3/4
CRA15-9	350	1/0	1-3/4
CRA15-11	350	3/0	1-3/4
CRA15-12	350	4/0	1-3/4
CRA15-13	350	250	1-3/4
CRA15-14	350	300	1-3/4

PART NUMBER	CABLE SIZE		DIMENSIONS IN INCHES
	FROM	TO	L
CRA18-3	500	#6	2-1/2
CRA18-5	500	#4	2-1/2
CRA18-7	500	#2	2-1/2
CRA18-8	500	#1	2-1/2
CRA18-9	500	1/0	2-1/2
CRA18-10	500	2/0	2-1/2
CRA18-11	500	3/0	2-1/2
CRA18-13	500	250	2-1/2
CRA18-14	500	300	2-1/2
CRA18-15	500	350	2-1/2
CRA18-16	500	400	2-1/2
CRA23-12	750	4/0	2-1/2
CRA23-15	750	350	2-1/2
CRA23-16	750	400	2-1/2
CRA23-18	750	500	2-1/2
CRA23-20	750	600	2-1/2

NOTE: Many other sizes available.

FOR OTHER SIZES, CONTACT YOUR SALES REPRESENTATIVE OR THE FACTORY.