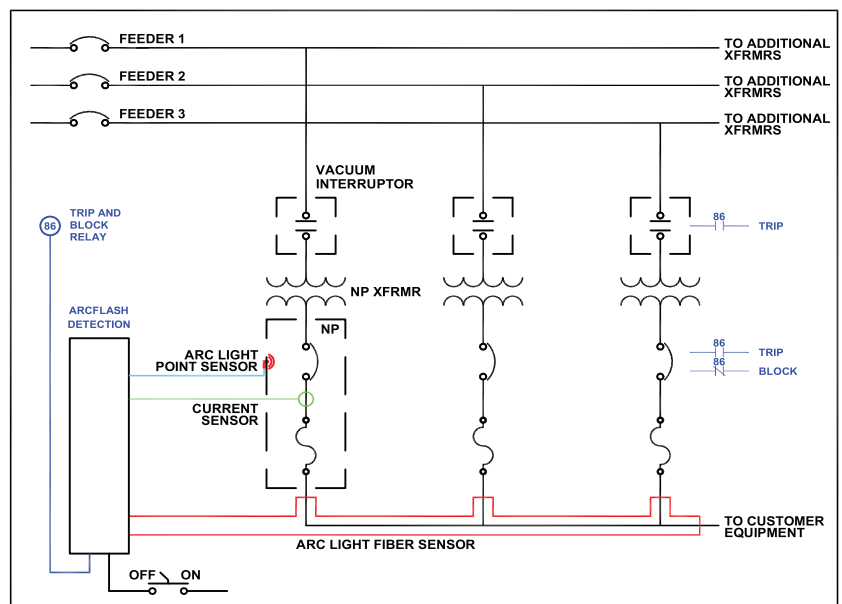
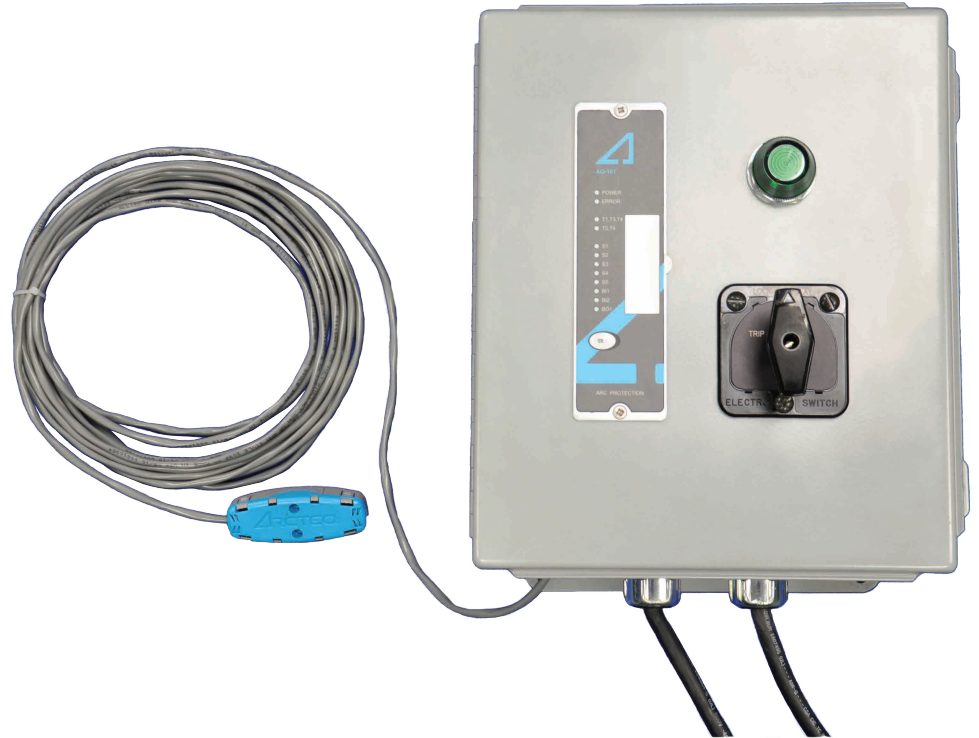


Arc Flash Detection System

Features

- Multimode Detection; Light Current and Pressure
- Lockout/86 relay integrated
- Detects bus faults
- Used with any network protector
- Manual override



Arcteq is a registered trade mark of Arcteq Relays Ltd, Finland.
Published under permission of Arcteq Relays Ltd.

For additional information or sales inquiries,
please contact:



Arc Light Point Sensor

Features

- 8000Lux light intensity threshold
- 180 degrees detection radius
- IP64 mechanical protection
- May connect up to 12 sensors
- Standard shielded twisted pair 0.75mm²
- Wiring arrangement
- Maximum wire length up to 200 meters
- Operating temperature -20...+85°C



ARCTEQ

Arcteq is a registered trade mark of Arcteq Relays Ltd, Finland.
Published under permission of Arcteq Relays Ltd.

For additional information or sales inquiries,
please contact:

Arc Light Fiber Sensor (Glass)

Features

- Covered glass fiber
- 8000Lux light intensity threshold
- 360 degrees detection radius
- 1cm bending radius
- Maximum fiber length 50 meters
- Operating temperature -40...+85°C



Arcteq is a registered trade mark of Arcteq Relays Ltd, Finland.
Published under permission of Arcteq Relays Ltd.

For additional information or sales inquiries,
please contact:



AQ 100 series – The efficient arc protection system

AQ 100 series offers a complete solution to arc flash protection. The AQ 100 is designed utilizing the most modern technology with a focus on simplicity while maintaining both flexibility and function. It is built to meet the growing demands in both LV and MV switchgear and controlgear applications ranging from basic stand-alone to more complex system solutions.

The AQ 100 series is designed and tested according to the latest protection relay standards and is hence suitable for installations in any environment, such as utility, power plant, wind-power, off shore, marine, oil and gas, mining, steel or any other heavy industry application and as well commercial and institutional electrical systems. The AQ 100 modular design makes it an excellent candidate for both new and retrofit installations.

AQ 100 Benefits

Speed

- As fast as 2ms trip time
- Connectivity to arc quenching system type AQ 2000 for rapid arc extinguishing

Flexibility

- Easy adaptation to any switchgear and trip scheme
- Variety of arc sensors available
- Long distance possible between units
- Practically an unlimited number of units can be interconnected in one system

Reliability

- Standard hard-wiring practice for communication between units
- Superior isolation level for external disturbances - tested at the highest EMC classes
- Selectable binary input threshold voltages
- Full self-supervision of all system components and interconnections

Simplicity

- AQ 100 Standard Arc Scheme (AQ-SAS*) approach for fast engineering and simple setting
- Auto-configuration feature with one push-button operation
- Installation downtime often limited to hours

Cost effectiveness

- Careful component selection optimizes the AQ 100 cost structure
- Use of standard cables for interconnection and sensor wiring
- Quick install of sensors and wires
- Cables can be cut to length on site

AQ 100 Standard Arc Schemes (AQ-SAS*)

- Reduction in engineering cost
- Quick and simple commissioning
- Less after sales costs

(*) AQ-SAS is a fully tested and documented standard arc protection solution library. Application descriptions, connection drawings and dipswitch settings are detailed in product literature reducing the required engineering effort and after sales cost significantly.



ARCTEQ
RELAYABLE POWER