

Aluminum Compression Lugs



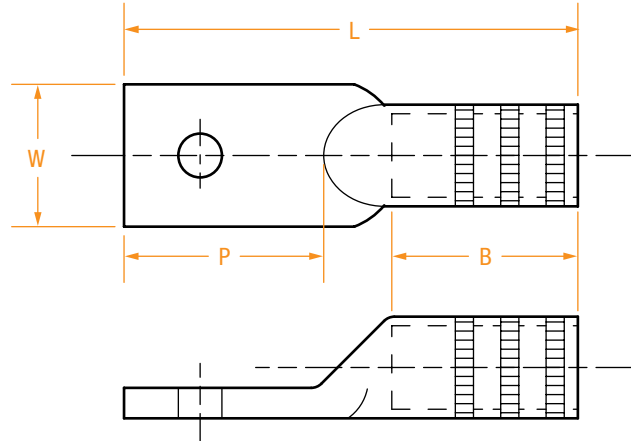
ALUMINUM COMPRESSION LUGS

	SERIES	PAGE
Short-Barrel Aluminum Lugs (One- & Two-Hole)	SAL Series	3
Short-Barrel Aluminum Lugs	SAL Series (continued)	4
One-Hole Aluminum Lugs	AL Series	5
One-Hole Aluminum Lugs	AL Series (continued)	6
Straight & Stacking One-Hole Aluminum Lugs – Common Die	ALCD & ASLCD Series	7
Straight & Stacking Two-Hole Aluminum NEMA Lugs	AL-N Series	8
Straight & Stacking Two-Hole Aluminum NEMA Lugs	AL-N Series (continued)	9
Straight & Stacking Two-Hole Aluminum NEMA Lugs – Common Die	ALCD-N Series	10
Tapered Aluminum Lugs	TAL Series	11
Tapered Aluminum Lugs	TAL Series (continued)	12
Pin Terminals	APT Series	13
Four-Hole Aluminum NEMA Lugs	AL-4N Series	14

SHORT-BARREL ALUMINUM LUGS (ONE- & TWO-HOLE)

SAL Series

- Made of high-conductivity aluminum – tin plated.
- Accepts both aluminum and copper conductors.
- Filled with an oxide-inhibiting compound.
- Marked with conductor size and die information.
- For NEMA standards or any other special size requirements.



PART NUMBER*	WIRE SIZE	# OF HOLES	BOLT SIZE	INSTALLING DIES	DIMENSIONS IN INCHES			
					B	L	P	W
SAL3	#6	1	1/4	5/16, 346, TP	3/4	1-3/4	5/8	5/8
SAL5	#4	1	5/16	TB, 375	7/8	2-3/16	13/16	13/16
SAL7	#2	1	3/8	TQ, 348, 1/2	1-1/8	2-1/2	7/8	7/8
SAL8	#1	1	3/8	TQ, 348, 1/2	15/16	2-9/16	1-1/8	3/4
SAL9	1/0	1	3/8	TU, BG, 5/8	1	2-9/16	1-1/8	13/16
SAL9-2N	1/0	2	3/8	TU, BG, 5/8	1	3-5/8	2-3/16	13/16
SAL10	2/0	1	1/2	TWTY, 297, 5/8-1	1-1/8	2-15/16	1-5/16	15/16
SAL10-2N	2/0	2	1/2	TWTY, 297, 5/8-1	1-1/8	4-11/16	3-1/16	15/16
SAL11	3/0	1	1/2	TV, 467, 781	1-1/4	3-3/16	1-5/16	1-1/16
SAL11-2N	3/0	2	1/2	TV, 467, 781	1-1/4	4-15/16	3-1/16	1-1/16
SAL12	4/0	1	1/2	TX, 298, 840	1-5/16	3-5/16	1-5/16	1-3/16
SAL12-2N	4/0	2	1/2	TX, 298, 840	1-5/16	5-1/16	3-1/16	1-3/16
SAL13	250	1	1/2	TX, 840, 324	1-7/16	3-7/16	1-5/16	1-1/4
SAL13-2N	250	2	1/2	TX, 840, 324	1-7/16	3-5/8	3-3/4	1-3/16
SAL14	300	1	1/2	TH, 470, 1	1-1/2	3-7/8	1-5/16	1-3/8
SAL14-2N	300	2	1/2	TH, 470, 1	1-1/2	5-5/16	3-1/16	1-3/8
SAL15	350	1	5/8	96, 299, 1-1/8	1-5/8	4-1/8	1-5/16	1-1/2
SAL15-2N	350	2	5/8	96, 299, 1-1/8	1-5/8	4-7/8	3-1/16	1-1/2
SAL16	400	1	5/8	96, 472, 1-1/8	1-13/16	4-7/8	1-9/16	1-5/8
SAL16-2N	400	2	5/8	96, 472, 1-1/8	1-13/16	6-1/4	3-9/16	1-5/8
SAL18	500	1	5/8	106A, 300, 1-5/16	1-7/8	5-1/16	1-13/16	1-13/16
SAL18-2N	500	2	5/8	106A, 300, 1-5/16	1-7/8	6-7/16	3-9/16	1-13/16

(continued)

**SHORT-BARREL
ALUMINUM LUGS**

SAL Series (continued)

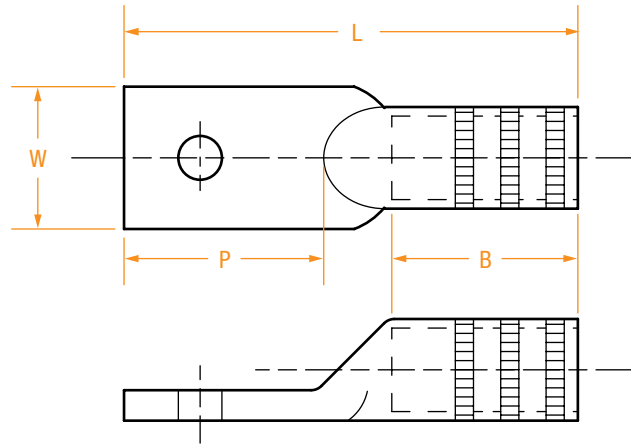
PART NUMBER*	WIRE SIZE	# OF HOLES	BOLT SIZE	INSTALLING DIES	DIMENSIONS IN INCHES			
					B	L	P	W
SAL20	600	1	5/8	115H, 473, 1-5/16	2	5-5/16	1-13/16	2
SAL20-2N	600	2	5/8	115H, 473, 1-5/16	2	6-5/8	3-9/16	2
SAL22	700	1	5/8	125H, 936, 1-1/2	2-1/4	5-3/4	1-13/16	2-3/16
SAL23-2N	750	2	5/8	125H, 936, 1-1/2	2-1/4	7-1/16	3-9/16	2-3/16
SAL24	800	1	5/8	140H, 474, 1-1/2	2-5/16	5-7/8	1-13/16	2-1/4
SAL24-2N	800	2	5/8	140H, 474, 1-1/2	2-5/16	7-1/8	3-9/16	2-1/4
SAL28	1000	1	5/8	150H, 302, 1-3/4	2-9/16	6-5/16	1-13/16	2-9/16
SAL28-2N	1000	2	5/8	150H, 302, 1-3/4	2-9/16	7-7/16	3-9/16	2-9/16
SAL30	1500	1	3/4	478, 189	3-3/16	7-9/16	2-1/16	3-1/16
SAL30-2N	1500	2	3/4	478, 189	3-3/16	8-7/16	3-9/16	3-1/16
SAL32	2000	1	3/4	479, 225	3-11/16	8-3/8	2-1/16	3-1/2
SAL32-2N	2000	2	3/4	479, 225	3-11/16	9-1/4	3-9/16	3-1/2

* For untinned lugs, add "-NT" from the part number (example: SAL3-NT for a #6 untinned lug with a 1/4" bolt).

ONE-HOLE ALUMINUM LUGS

AL Series

- Made of high-conductivity aluminum – tin plated.
- Accepts both aluminum and copper conductors.
- Filled with an oxide-inhibiting compound.
- Marked with conductor size and die information.
- For NEMA standards or any other special size requirements.



PART NUMBER*	WIRE SIZE	BOLT SIZE	INSTALLING DIES	DIMENSIONS IN INCHES			
				B	L	P	W
AL3-1/4	6	1/4	5/16, 346, TP	13/16	2-5/32	7/8	9/16
AL5-1/4	4	1/4	TB, 375	1	2-1/2	23/32	21/32
AL7-1/4	2	1/4	TQ, 348, 1/2	1	2-1/2	23/32	21/32
AL9-3/8	1/0	3/8	TU, BG, 5/8	1-1/4	3-3/16	1-1/4	7/8
AL9	1/0	1/2	TU, BG, 5/8	1-1/4	3-3/16	1-1/4	7/8
AL10-3/8	2/0	3/8	TWTY, 297, 5/8-1	1-3/8	3-3/16	1-1/4	15/16
AL10	2/0	1/2	TWTY, 297, 5/8-1	1-3/8	3-3/16	1-1/4	15/16
AL11-3/8	3/0	3/8	TV, 467, 781	1-1/2	3-7/16	1-5/16	1-1/16
AL11	3/0	1/2	TV, 467, 781	1-1/2	3-7/16	1-5/16	1-1/16
AL12-3/8	4/0	3/8	TX, 298, 840	1-1/2	3-9/16	1-5/16	1-3/16
AL12	4/0	1/2	TX, 298, 840	1-1/2	3-9/16	1-5/16	1-3/16
AL13	250	1/2	TX, 840, 324	1-5/8	3-5/8	1-5/16	1-1/4
AL14	300	1/2	TH, 470, 1	2-1/4	4	1-5/16	1-3/8
AL15	350	1/2	96, 299, 1-1/8	2-1/4	4-1/4	1-5/16	1-1/2
AL16	400	1/2	96, 472, 1-1/8	2-1/2	4-7/8	1-1/4	1-5/8
AL16-5/8	400	5/8	96, 472, 1-1/8	2-1/2	4-7/8	1-1/4	1-5/8
AL18	500	1/2	106A, 300, 1-5/16	3	5-7/16	1-1/2	1-3/4
AL18-5/8	500	5/8	106A, 300, 1-5/16	3	5-7/16	1-1/2	1-3/4
AL20	600	1/2	115H, 473, 1-5/16	3	5-7/16	1-1/2	1-15/16
AL20-5/8	600	5/8	115H, 473, 1-5/16	3-1/16	5-11/16	1-9/16	1-15/16

(continued)

**ONE-HOLE
ALUMINUM LUGS**

AL Series (continued)

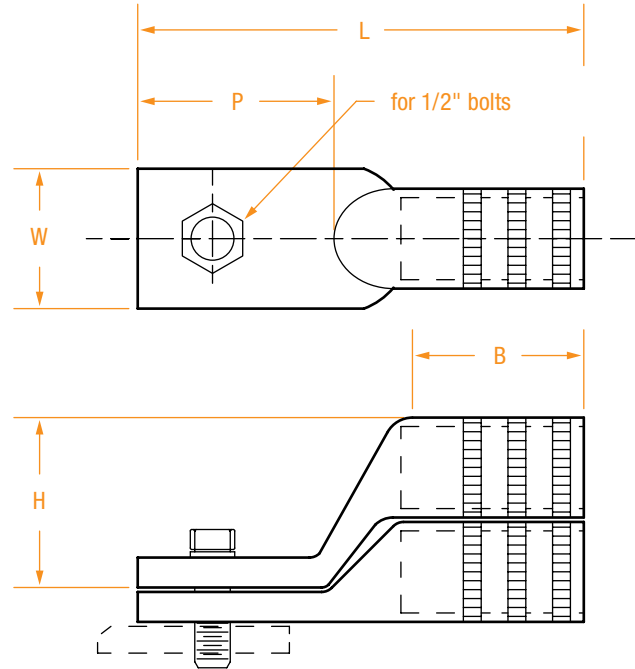
PART NUMBER*	WIRE SIZE	BOLT SIZE	INSTALLING DIES	DIMENSIONS IN INCHES			
				B	L	P	W
AL23	700-750	1/2	125H, 608, 1-1/2	3-3/8	6-1/2	1-7/8	1-3/4
AL23-5/8	700-750	5/8	125H, 608, 1-1/2	3-3/8	6-1/2	1-7/8	1-3/4
AL24	800	1/2	140H, 474, 1-1/2	3-3/8	6-5/8	1-7/8	1-13/16
AL24-5/8	800	5/8	140H, 474, 1-1/2	3-3/8	6-5/8	1-7/8	1-13/16
AL28	1,000	1/2	150H, 725, 1-3/4	4-5/8	7-7/8	1-7/8	2-9/16
AL28-5/8	1,000	5/8	150H, 725, 1-3/4	4-5/8	7-7/8	1-7/8	2-9/16

* For untinned lugs, add "-NT" to the part number (example: AL3-NT for a #6 untinned lug with a 1/4" bolt).

STRAIGHT & STACKING ONE-HOLE ALUMINUM LUGS – COMMON DIE

ALCD & ASLCD Series

- Made of high-conductivity aluminum – tin plated.
- Accepts both aluminum and copper conductors.
- Filled with an oxide-inhibiting compound.
- Marked with conductor size and die information.



STRAIGHT LUG PART NUMBER*	STACKING LUG PART NUMBER*	CONDUCTOR		INSTALLING DIES	DIMENSIONS IN INCHES				
		CONCENTRIC	COMPACT		B	H**	L	P	W
ALCD2	ASLCD2	8	–	687, 52, BG, TU, 243, 5/8, 8A	1-3/8	1-1/2	3-1/8	1-5/16	7/8
ALCD3	ASLCD3	6	4	687, 52, BG, TU, 243, 5/8, 8A	1-3/8	1-1/2	3-1/8	1-5/16	7/8
ALCD5	ASLCD5	4	–	687, 52, BG, TU, 243, 5/8, 8A	1-3/8	1-1/2	3-1/8	1-5/16	7/8
ALCD7	ASLCD7	2	1	687, 52, BG, TU, 243, 5/8, 8A	1-3/8	1-1/2	3-1/8	1-5/16	7/8
ALCD8	ASLCD8	1	–	687, 52, BG, TU, 243, 5/8, 8A	1-3/8	1-1/2	3-1/8	1-5/16	7/8
ALCD9	ASLCD9	1/0	2/0	687, 52, BG, TU, 243, 5/8, 8A	1-3/8	1-1/2	3-1/8	1-5/16	7/8
ALCD10	ASLCD10	2/0	3/0	249, TX, 76, 658, 840, 324, 11A	1-7/16	1-3/4	3-1/4	1-3/8	1-1/4
ALCD11	ASLCD11	3/0	4/0	249, TX, 76, 658, 840, 324, 11A	1-1/2	1-3/4	3-3/8	1-3/8	1-1/4
ALCD12	ASLCD12	4/0	250	249, TX, 76, 658, 840, 324, 11A	1-1/2	1-3/4	3-3/8	1-3/8	1-1/4
ALCD13	ASLCD13	250	300	249, TX, 76, 658, 840, 324, 11A	1-1/2	1-3/4	3-3/8	1-3/8	1-1/4
ALCD14		300	350	299, 96, 655, 321, 316, 1-1/8	1-5/8	–	3-5/8	1-3/8	1-1/4
ALCD15		350	400	299, 96, 655, 321, 316, 1-1/8	1-5/8	–	3-5/8	1-3/8	1-1/4
ALCD16		400	500	300, 317, 1-5/16, 426	1-5/8	–	3-5/8	1-3/8	1-1/4
ALCD18		500	–	300, 317, 1-5/16, 426	2-1/8	–	3-5/8	1-1/4	1-5/16

FOR OTHER SIZES, CONTACT YOUR SALES REPRESENTATIVE OR THE FACTORY.

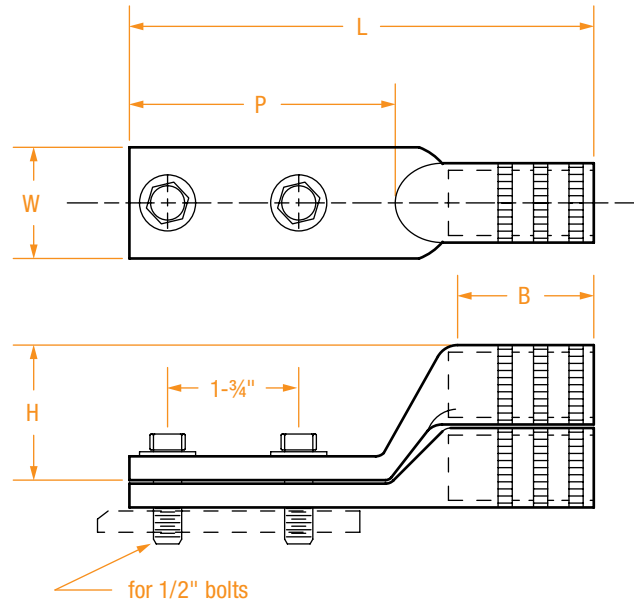
* For untinned lugs, add “-NT” to the part number (example: ALCD2-NT for #8 straight untinned lug).

** For stacking lugs only.

STRAIGHT & STACKING TWO-HOLE ALUMINUM NEMA LUGS

AL-N Series

- Made of high-conductivity aluminum – tin plated.
- Accepts both aluminum and copper conductors.
- Filled with an oxide-inhibiting compound.
- Marked with conductor size and die information.
- In accordance with all NEMA standards.



STRAIGHT LUG PART NUMBER*	STACKING LUG PART NUMBER*	WIRE SIZE	INSTALLING DIES	DIMENSIONS IN INCHES				
				B	H**	L	P	W
AL3-2N	ASL3-2N	6	375, TB	1-1/4	–	4-3/4	3-1/8	7/8
AL5-2N	ASL5-2N	4	375, TB	1-1/4	–	4-3/4	3-1/8	7/8
AL7-2N	ASL7-2N	2	52, BG, 243, 5/8	1-5/8	1-1/2	5-1/4	3-1/8	1
AL8-2N	ASL8-2N	1	52, BG, 243, 5/8	1-1/2	1-1/2	5-1/4	3-1/8	1
AL9-2N	ASL9-2N	1/0	52, BG, 243, 5/8	1-1/2	1-1/2	5-1/8	3-1/8	1
AL10-2N	ASL10-2N	2/0	58, 297, 245, 5/8-1	1-3/4	1-5/8	5-1/2	3-1/8	1
AL11-2N	ASL11-2N	3/0	66, 167, 247, 781	1-7/8	1-3/4	5-5/8	3-1/8	1-1/8
AL12-2N	ASL12-2N	4/0	840, 298, TX	2	1-7/8	5-5/8	3-1/8	1-1/8
AL13-2N	ASL13-2N	250	840, 324, TX	2-1/8	2	6	3-1/8	1-1/8
AL14-2N	ASL14-2N	300	87H, 470, 251, 1	2-1/4	2	6-5/8	3-1/8	1-5/16
AL15-2N	ASL15-2N	350	96, 299, 655, 1-1/8	2-1/4	2-3/8	6-5/8	3-1/8	1-1/2
AL16-2N	ASL16-2N	400	96, 472, 705, 1-1/8	2-1/2	2-1/2	6-5/8	3-1/8	1-5/8
AL18-2N	ASL18-2N	500	106A, 300, 426 1-5/16	3	2-5/8	6-7/8	3-1/8	1-3/4
AL20-2N	ASL20-2N	600	115H, 473, 786 1-5/16	3	2-3/4	7-1/2	3-1/8	1-3/4
AL23-2N	ASL23-2N	700-750	140H, 301, 342, 1-1/2	3-3/8	3	7-1/2	3-1/8	1-3/4
AL24-2N	ASL24-2N	800	140H, 474, 724, 1-5/8	3-13/32	3-1/8	7-1/2	3-1/8	1-3/4

(continued)

STRAIGHT & STACKING TWO-HOLE ALUMINUM NEMA LUGS

AL-N Series (continued)

STRAIGHT LUG PART NUMBER*	STACKING LUG PART NUMBER*	WIRE SIZE	INSTALLING DIES	DIMENSIONS IN INCHES				
				B	H**	L	P	W
AL28-2N-W	ASL28-2N-W	1,000	161, 302, 727, 1-3/4	4-11/16	3-1/4	9-1/2	3-5/8	2-9/16
AL28-2N	ASL28-2N	1,000	161, 302, 727, 1-3/4	4-5/8	3-1/4	9-1/2	3-5/8	1-3/4
AL29-2N	ASL29-2N	1,250	1-7/8, 727	4-5/8	–	9-5/8	3-5/8	1-3/4
AL30-2N	ASL30-2N	1,500	478	5-9/16	–	10-7/8	3-5/8	3-3/16
AL31-2N	ASL31-2N	1,750	204, 729, 40AH	5-1/2	–	–	3-5/8	3-3/16
AL32-2N	ASL32-2N	2,000	479	6-1/16	–	11-15/16	3-5/8	3-1/2

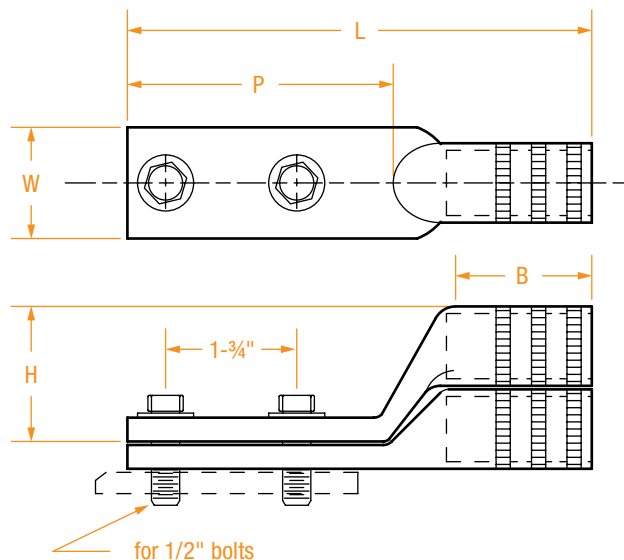
* For untinned lugs, add “-NT” to the part number (example: AL3-2N-NT for #6 straight untinned lug).

** For stacking lugs only.

STRAIGHT & STACKING TWO-HOLE ALUMINUM NEMA LUGS – COMMON DIE

ALCD-N Series

- Made of high-conductivity aluminum – tin plated.
- Accepts both aluminum and copper conductors.
- Filled with an oxide-inhibiting compound.
- Marked with conductor size and die information.
- In accordance with all NEMA standards.



STRAIGHT LUG PART NUMBER*	STACKING LUG PART NUMBER*	WIRE SIZE	INSTALLING DIES	DIMENSIONS IN INCHES				
				B	H**	L	P	W
ALCD1-2N	ASLCD1-2N	8	TU, 52, BG, 687, 243, 5/8, 8A	1-1/2	1-1/2	5-1/8	3-1/16	1-1/4
ALCD3-2N	ASLCD3-2N	6	TU, 52, BG, 687, 243, 5/8, 8A	1-1/2	1-1/2	5-1/8	3-1/16	1-1/4
ALCD5-2N	ASLCD5-2N	4	TU, 52, BG, 687, 243, 5/8, 8A	1-7/8	1-1/2	5-5/8	3-1/16	1-1/4
ALCD7-2N	ASLCD7-2N	2	TU, 52, BG, 687, 243, 5/8, 8A	1-7/8	1-1/2	5-5/8	3-1/16	1-1/4
ALCD8-2N	ASLCD8-2N	2&1	TU, 52, BG, 687, 243, 5/8, 8A	1-7/8	1-1/2	5-5/8	3-1/16	1-1/4
ALCD9-2N	ASLCD9-2N	1/0	TU, 52, BG, 687, 243, 5/8, 8A	1-7/8	1-1/2	5-5/8	3-1/16	1-1/4
ALCD10-2N	ASLCD10-2N	2/0	TX, 76, 324, 249, 658, 840, 11A	2	1-3/4	5-7/8	3-1/16	1-1/4
ALCD11-2N	ASLCD11-2N	3/0	TX, 76, 324, 249, 658, 840, 11A	2	1-3/4	6-5/16	3-1/16	1-1/4
ALCD12-2N	ASLCD12-2N	4/0	TX, 76, 324, 249, 658, 840, 11A	2	1-3/4	6-5/16	3-1/16	1-1/4
ALCD13-2N	ASLCD13-2N	250	TX, 76, 324, 249, 658, 840, 11A	2	1-3/4	6-5/16	3-1/16	1-9/16
ALCD14-2N	ASLCD14-2N	300	96, 299, 655, 1-1/8	2-1/4	–	6-1/2	3-1/16	1-9/16
ALCD15-2N	ASLCD15-2N	350	96, 299, 655, 1-1/8	2-1/4	–	6-1/2	3-1/16	1-9/16
ALCD16-2N	ASLCD16-2N	400	300, 1-5/16, 317, 426	2-1/2	–	6-1/2	3-1/16	1-5/8
ALCD18-2N	ASLCD18-2N	500	300, 1-5/16, 317, 426	2-3/4	–	6-5/8	3-1/16	1-5/8
ALCD23-2N	ASLCD23-2N	750	302, 1-3/4, 161	3-3/8	–	7-1/8	3-1/16	1-5/8
ALCD24-2N	ASLCD24-2N	800	302, 1-3/4, 161	3-3/8	–	7-1/8	3-1/16	1-5/8
ALCD28-2N	ASLCD28-2N	1000	302, 1-3/4, 161	3-7/8	–	7-5/8	3-1/16	1-5/8

FOR OTHER SIZES, CONTACT YOUR SALES REPRESENTATIVE OR THE FACTORY.

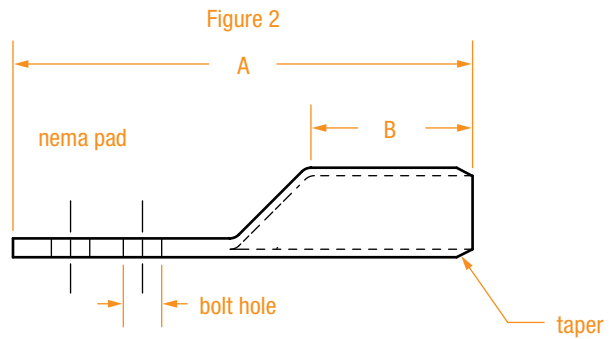
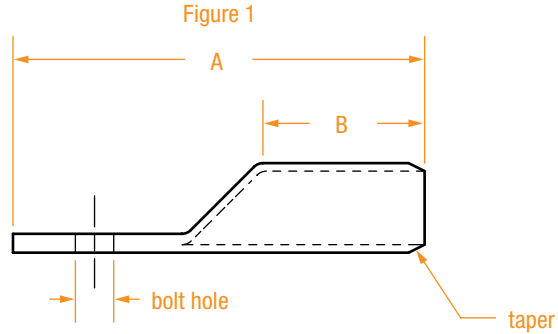
* For untinned lugs, add “-NT” to the part number (example: ALCD2-2N-NT for a #8 straight untinned lug).

** For stacking lugs only.

TAPERED ALUMINUM LUGS

TAL Series

- Made of high-conductivity aluminum – tin plated.
- Accepts both aluminum and copper conductors.
- Filled with an oxide-inhibiting compound.
- Marked with conductor size and die information.
- In accordance with all NEMA standards.



PART NUMBER*	FIGURE	WIRE SIZE	INSTALLING DIES	PAD WIDTH	BOLT HOLE	DIMENSIONS IN INCHES	
						A	B
TAL5	1	4	375, 162, 3/8, 37	11/16	7/16	2-3/16	7/8
TAL7	1	2	239, 348, 1/2, 6A, 42	13/16	7/16	2-1/2	1
TAL8	1	1	243, 296, 5/8, 8A, 49	7/8	7/16	3-3/16	1-1/4
TAL9	1	1/0	243, 296, BG, 5/8, 8A, 49	7/8	7/16	3-3/16	1-1/4
TAL9-2N	2	1/0	243, 296, BG, 5/8, 8A, 49	7/8	9/16	5-9/32	1-1/2
TAL10	1	2/0	245, 297, 5/8-1, 9A, 60	31/32	9/16	3-3/16	1-3/8
TAL10-2N	2	2/0	245, 297, 5/8-1, 9A, 60	31/32	9/16	5-1/2	1-1/2
TAL11	1	3/0	247, 467, 781, 10A, 66	1-1/16	9/16	3-7/16	1-1/2
TAL11-2N	2	3/0	247, 467, 781, 10A, 66	1-1/16	9/16	5-1/2	1-1/2
TAL12	1	4/0	298, 840, 11A, 71	1-1/4	9/16	3-9/16	1-1/2
TAL12-2N	2	4/0	298, 840, 11A, 71	1-1/4	9/16	5-15/16	1-3/4
TAL13	1	250	249, 840, 11A, 71	1-1/4	9/16	3-5/8	1-5/8
TAL13-2N	2	250	249, 840, 11A, 71	1-1/4	9/16	6	1-3/4

(continued)

TAPERED
ALUMINUM LUGS

TAL Series (continued)

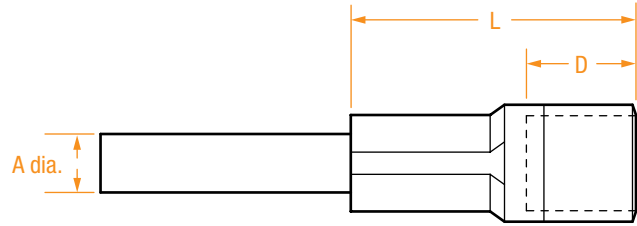
PART NUMBER*	FIGURE	WIRE SIZE	PAD WIDTH	BOLT HOLE	INSTALLING DIES	DIMENSIONS IN INCHES	
						A	B
TAL14	1	300	1-13/32	9/16	251, 470, 1.00, 12A, 96	4	2-1/4
TAL14-2N	2	300	1-13/32	9/16	251, 470, 1.00, 12A, 96	6-9/16	2-1/4
TAL15	1	350	1-9/16	9/16	299, 321, 1-1/8, 13A, 96	4-1/4	2-1/4
TAL15-2N	2	350	1-9/16	9/16	299, 321, 1-1/8, 13A, 96	6-9/16	2-1/4
TAL16-2N	2	400	1-21/32	9/16	472, 523, 1-1/8, 14A, 106	6-7/8	2-1/2
TAL18-2N	2	500	1-27/32	9/16	300, 317, 1-5/16, 15A, 106	7-5/16	3
TAL20-2N	2	600	2	9/16	473, 525, 1-5/16, 125	7-1/2	3
TAL23-2N	2	750	2-3/16	9/16	301, 527, 1-1/2, 140	8-1/4	3-3/8
TAL24-2N	2	800	2-9/32	9/16	474, 725, 1-5/8, 140	8-1/4	3-3/8
TAL28-2N	2	1,000	2-17/32	9/16	302, 292, 1-3/4, 150	9-5/8	4-5/8
TAL30-2N	2	1,500	3-3/32	9/16	478, 189	10-13/16	5-1/2
TAL32-2N	2	2,000	3-19/32	9/16	479, 225	11-7/8	6

* For untinned lugs, add "-NT" to the part number (example: TAL5-NT for a #4 untinned lug).

PIN TERMINALS

APT Series

- For Aluminum and ACSR cable.
- Fabricated from high-conductivity aluminum and soft-drawn, solid tin-plated copper wire.
- Filled with an oxide-inhibiting compound.
- Marked with conductor size and die information.
- Available in a variety of cable and pin sizes.



PART NUMBER	ALUMINUM CABLE SIZE	DIE INFORMATION	PIN DIAMETER A	DIMENSIONS IN INCHES	
				L	D
APT7	#2	5/8, 296	0.250	3.25	1.78
APT9	1/0	5/8, 296	0.250	3.25	1.78
APT10	2/0	324, 840	0.312	4.22	2.28
APT12	4/0	324, 840	0.375	4.22	2.28
APT15	350	1-1/8, 299	0.460	5.25	3.00
APT18	500	140H, 301	0.750	6.30	3.41
APT23	750	140H, 301	0.750	6.30	3.41
APT28	1,000	140H, 301	0.875	6.30	3.41

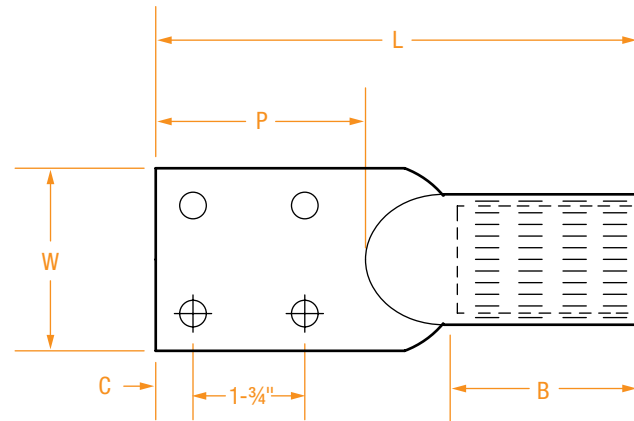
FOR OTHER SIZES, CONTACT YOUR SALES REPRESENTATIVE OR THE FACTORY.

Available with any length pin – standard pin length is 6".

FOUR-HOLE ALUMINUM NEMA LUGS

AL-4N Series

- Made of high-conductivity aluminum – tin plated.
- Accepts both aluminum and copper conductors.
- Filled with an oxide-inhibiting compound.
- Marked with conductor size and die information.
- In accordance with all NEMA standards.



PART NUMBER	WIRE SIZE	INSTALLING DIES	DIMENSIONS IN INCHES				
			B	C	L	P	W
AL15-4N	350	96, 299, 655, 1-1/8	3	5/8	7-5/16	3	3
AL18-4N	500	106A, 300, 426 1-5/16	3	5/8	7-5/16	3	3
AL23-4N	750	140H, 301, 342, 1-1/2	4	5/8	8-1/2	3	3
AL24-4N	800	140H, 474, 724, 1-5/8	4	5/8	8-1/2	3	3
AL28-4N	1,000	161, 302, 727, 1-3/4	5-5/8	5/8	10-3/8	3	3
AL28CR-4N	1,000	161, 302, 727, 1-3/4	6	5/8	11-1/4	3	3
AL29-4N	1,250	1-7/8, 727	6	5/8	11-1/8	3-3/8	3-1/8

FOR OTHER SIZES, CONTACT YOUR SALES REPRESENTATIVE OR THE FACTORY.