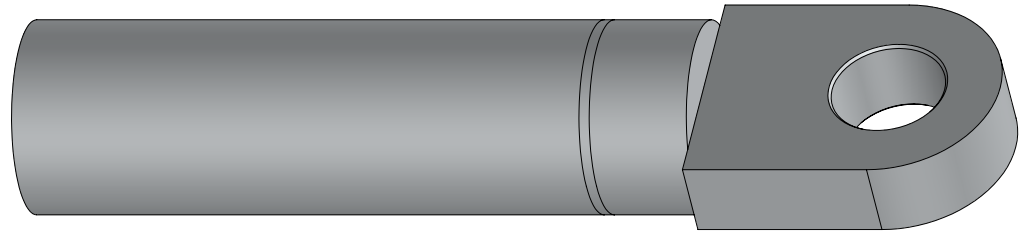


900A Copper Compression Lug

Product Data Sheet

Richards P9CU Series Copper Compression Lugs are current carrying components installed on power cable conductors and can be used to assemble Deadbreak Elbows, Disconnectable Joints, and related products. The P9CU Series Lugs are rated for use on Copper conductors only.

They have been qualified per IEEE 386 to 900A rating. The lugs are tin-plated and supplied with an 11/16" unthreaded hole by default. They are also available with a 15/16"-9 threaded hole (to order as such, add "-15/16" to the part number).



Range

Size	Outer Diameter (in.)	"D" (in.)	Cable Size	
			Stranded Compressed	Compact
07	0.63	3.66	#2	#1
08	0.63	3.66	#1	1/0
09	0.63	3.66	1/0	2/0
10	0.63	3.66	2/0	3/0
11	0.70	3.66	3/0	4/0
12	0.75	3.66	4/0	250
13	0.81	3.66	250	300
14	0.86	3.66	300	350
15	0.90	3.66	350	400
16	1.04	3.66	400	450
17	1.04	3.66	450	500/500
18	1.10	3.66	500	600
20	1.19	3.66	600	700
21	1.31	3.66	650	750/800
22	1.35	3.66	700	—
23	1.35	3.66	750	900
26	1.55	3.66	900	1000
28	1.55	3.66	1000	—
29	1.71	3.66	1250	—

Basic Dimensions

