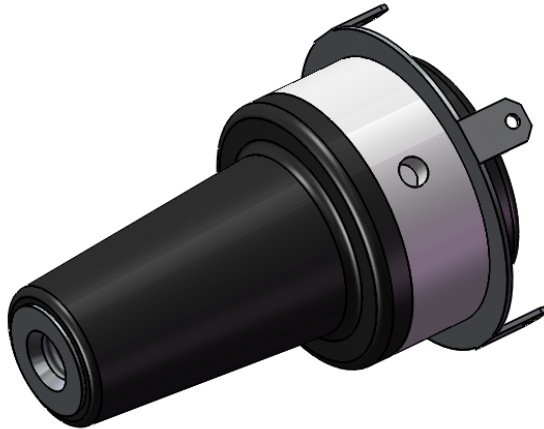
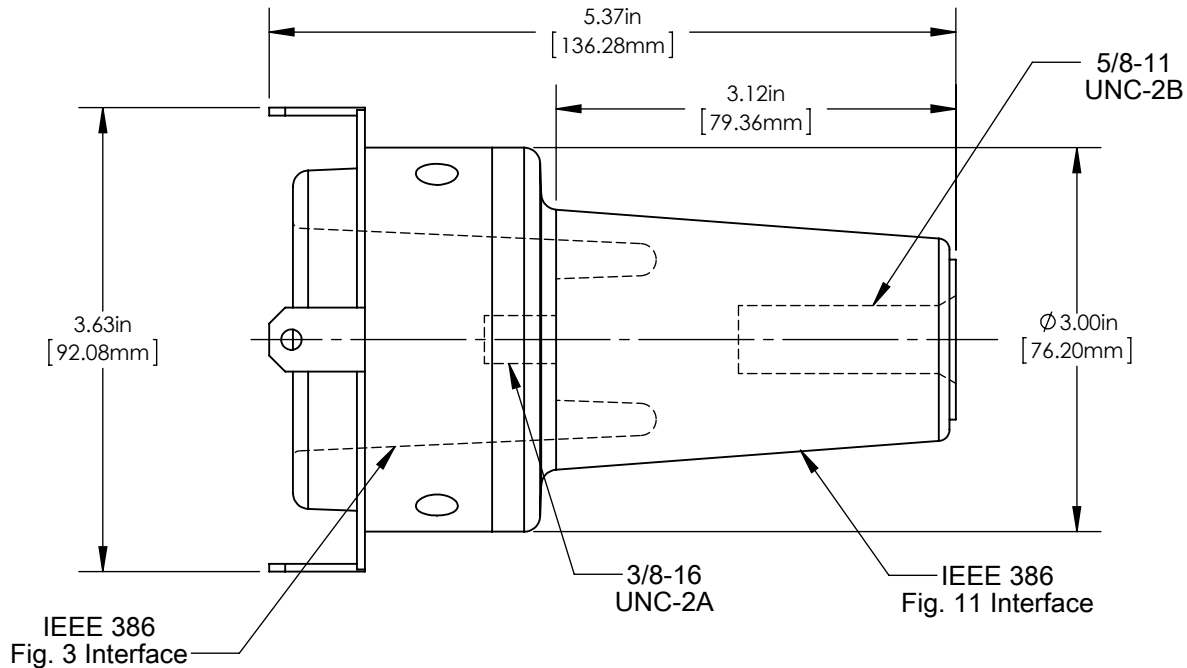


Product Specifications

15/25 kV 900A Reducing Tap Well



Richards 15/25 kV Reducing Tap Well (P925RTW) converts a 900A interface (IEEE 386, Fig. 11) to a 200A well interface (IEEE 386, Fig. 3).

The reducing tap well can accept either loadbreak or deadbreak inserts for connection to 200A devices. The P925RTW should be assembled with a spanner wrench (P6SW) per manufacturer's instructions.

Add -LS to include loose stud (P925RTW-LS)

Add -S to include factory installed stud (P925RTW-S)

Product Ratings

Operating Voltage	16.2 kV L-G 28 kV L-L
Impulse Withstand	140 kV BIL
AC Withstand	45 kV
DC Withstand	84 kV
Partial Discharge	22 kV CEV

Richards 15/25 kV 900A Reducing Tap Well (P925RTW) was designed and validated against the following industry standards:

- ANSI/IEEE Std. 386: For Separable Insulated Connector Systems
- ANSI C119.4: For Electric Connectors
- IEEE Std. 592: For Exposed Semiconducting Shields