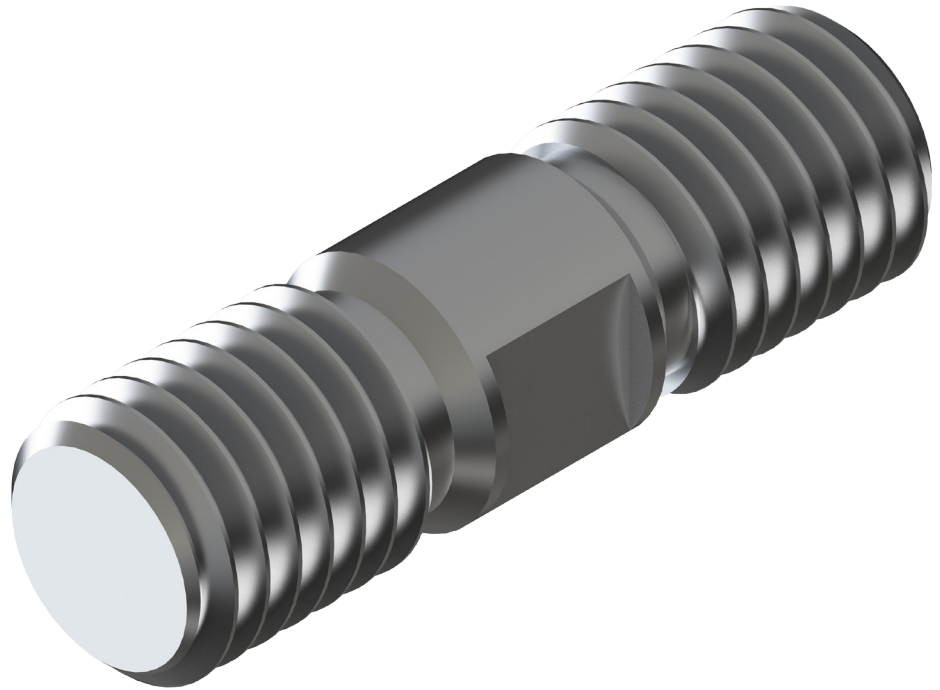


15/25kV Threaded Stud

Product Data Sheet

The Richards 15/25kV Threaded Stud provides a means to bolt together IEEE 386 Interface 11 Deadbreak Products. The Stud is available in Copper or Aluminum. The Copper Stud is typically used when 900A connections are required. The Stud can be supplied factory-installed on certain Deadbreak Accessories such as Deadbreak Insulating Caps and Deadbreak Insulating Plugs. Both the Copper and Aluminum Studs are tin-plated.



Features

- Tin-Plated
- Machined with flats for tightening
- Available in Aluminum or Copper

Basic Dimensions

